

Quelfire QWW CE Marked Intuwra^s prevent the spread of fire through PVC, HDPE & PP pipes where they penetrate fire compartment floors.



QWW CE Marked Intuwra



QWW CE Marked Intuwra installed in concrete slab

FEATURES & BENEFITS

- Tested to BSEN 1366-3: 2009
- Classified according to EN 13501-2: 2007 + A1: 2009
- CE Marked
- Up to 4 hour fire rating
- Suitable for PVC, PVC-U, PE, HDPE, MDPE & PP pipes
- Available for 32—160mm pipes
- For use in concrete floors
- No mechanical fixings required
- Performance unaffected by weathering (Type X Durability)
- Assessed for use in steel profile deck concrete composite floors
- Compatible with the QuelStop System – QF2 Fire Protection Compound

DURABILITY

Tested to Type X durability which means the QWW CE Marked Intuwra can be installed in conditions exposed to weathering.



The Warringtonfire Logo displayed is the trademark of Warringtonfire registered in the United Kingdom. The Warringtonfire Logo is evidence that the products denoted as 'Tested by Warringtonfire' were tested to BSEN 1366-3: 2009 in England between September 22nd 2015 and January 7th 2021



This product is CE Marked.

COMPOSITION

The QWW CE Marked Intuwra consist of a high performance graphite based intumescent material within a polythene cover which reacts under the influence of heat to exert pressure on the pipe as it softens to form a carbonaceous char which provides an effective insulation plug thus preventing smoke and fire passing through to the adjoining compartment. QWW Intuwra are manufactured specifically to suit individual pipe diameters. The correct product is chosen by determining the outside diameter of the pipe. A QWW110/CE suits a 110mm outside diameter plastic pipe and a QWW50/CE suits a 50mm outside diameter plastic pipe for example.

The orange plastic sleeve is an integral part of the QWW Intuwra so should not be removed. QWW Intuwra have a self adhesive tap on one end which is used to secure the wrap around the pipe.

APPLICATION/INSTALLATION

The QWW CE Marked Intuwrap can be installed within concrete floors around plastic pipes to maintain the fire compartment. A lot of extra work and associated cost can be avoided by early coordination and good communication between all trades. For example where the correct diameter hole is diamond drilled, no shuttering will be required and installation is very simple requiring a simple backfill on top of the Intuwrap.

Where holes are incorrectly drilled oversized or larger square holes are left or formed then the hole will need shuttering and the whole penetration backfilling with QF2 Fire Protection Compound.

There must be no gap around the Intuwrap and the Intuwrap must be fitted flush with the underside of the concrete slab or fire seal.

Full installation details and step by step instructions are available to show the options.



QWW CE Marked Intuwrap installed in an oversized hole sealed with QF2 Fire Protection Compound in concrete slab



QWW CE Marked Intuwrap installed in a diamond drilled hole in concrete slab

PERFORMANCE

QWW CE Marked Intuwaps are suitable for use in concrete floors with plastic pipes including HDPE, PVC and PP in concrete floors providing up to 4 hours integrity. They are also tested in QF2 Fire Protection Compound seals and assessed for use in steel profile/concrete composite decks providing up to 2 hours integrity. For full details and performance information contact the Quelfire Technical Team.

Product Code	Pipe Size mm	Approx. space needed around pipe to fit QWW (mm)	Recommended hole diameter (mm)	QWW Length (mm)	Fire Rating
QWW32/CE	32Ø	5	42Ø	60	Up to 4 Hours
QWW40/CE	40Ø	5	50Ø	60	Up to 4 Hours
QWW50/CE	50Ø	5	60Ø	60	Up to 4 Hours
QWW55/CE	55Ø	10	74Ø	60	Up to 4 Hours
QWW63/CE	63Ø	10	82Ø	60	Up to 4 Hours
QWW75/CE	75Ø	10	94Ø	60	Up to 4 Hours
QWW82/CE	82Ø	10	102Ø	60	Up to 4 Hours
QWW90/CE	90Ø	10	110Ø	60	Up to 4 Hours
QWW110/CE	110Ø	12	132Ø	60	Up to 4 Hours
QWW125/CE	125Ø	15	155Ø	60	Up to 4 Hours
QWW160/CE	160Ø	22	204Ø	60	Up to 4 Hours

Technical Support & Guidance:

Should you require any further information regarding this product, please do not hesitate to contact the technical department at Quelfire Ltd.

Tel: **0161 928 7308**. Email: technical@quelfire.co.uk

Please be aware that this document is intended for general information only and all details should be checked against all relevant supporting test evidence, certification and installation guidelines.

Use of alternative components or deviations from the instructions in any way is likely to mean that the installation will not comply with the assessed rating.

Quelfire Ltd does not accept responsibility for the consequences of using Quelfire products in applications or for purposes not authorised by Quelfire Ltd. Expert advice should be sought where such applications are contemplated.

The policy of Quelfire Ltd is one of constant improvement. Details are subject to change and/or withdrawal without notification therefore you must ensure this is the latest published documentation. Whilst Quelfire will endeavour to keep its publications up to date, the accuracy of the information contained within this document may be affected by pertinent changes in the law or regulatory requirements and alterations or amendments to the specification of Quelfire products.

All information contained in this document is given in good faith and is provided for guidance only. Any drawings provided are for illustrative purposes only. As Quelfire Ltd has no control over the methods or competence of installation and of prevailing site conditions, no warranties, expressed or implied, is intended to be given as to the actual performance of the product mentioned or referred to herein and no liability whatsoever will be accepted for any loss, damage or injury arising from the use of the information given. Full terms and conditions can be accessed at: <https://quelfire.co.uk/terms-conditions-of-sale/>

Quelfire QWX Large Diameter Fire Collars prevent the spread of fire through large diameter pipes where they penetrate fire compartment walls and floors.



QWX Large Diameter Fire Collar

FEATURES & BENEFITS

- Tested to BSEN 1366-3: 2009
- Suitable for concrete floors and blockwork walls
- Up to 4 hour fire rating
- Available for 200 - 400mm diameter pipes
- Can be retrofitted

COMPOSITION

The QWX Large Diameter Fire Collars consist of a continuous pressed stainless steel flexible shell containing high performance graphite based intumescent material which reacts under the influence of heat to exert pressure on the pipe as it softens to form a carbonaceous char which provides an effective insulation plug thus preventing smoke and fire passing through to the adjoining compartment. The QWX Fire Collar has built in fixing lugs which are used to secure it to the structure.

APPLICATION/INSTALLATION

QWX Large Diameter Fire Collars should be used where a large diameter plastic pipe penetrates a fire rated wall or floor.

For vertical pipework, one unit should be installed to the underside of the floor, and for the QWX350 and QWX400 one units should be fitted on both sides of the concrete floor. Holes through the substrate should be drilled as close as possible to the diameter of the plastic pipe. For horizontal pipework one unit should be fitted to each side of the wall.

The soffit of the floor or the face of the wall must be smooth and where there are irregularities in the surface, the space between the flange of the unit and floor or the wall should be made good using QSS QuelStop CE Marked Intumescent Acrylic Sealant.

The QWX Large Diameter Fire Collar should be fed around the plastic pipe, securing the ends together by passing the tongues on one end through the slots on the other end. The tongues should then be bent back and the unit secured to the structure using the integral fixing lugs.

The QWX Fire Collar must be secured to concrete and masonry construction with M8 x 65mm steel sleeve anchors through all the fixing lugs.

PERFORMANCE

QWX Fire Collars are suitable for use on concrete floors and concrete/masonry walls with HDPE and U-PVC plastic pipes providing up to 4 hours integrity.

For full details and performance information refer to the installation details available from the Quelfire Technical department. A summary of results is as follows:

Product Code	Pipe Size (mm)	Recommended hole diameter (mm)	QWX length (mm)	No. of fixing lugs	Fire Rating (Walls)	Fire Rating (Floors)
QWX200	200Ø	202Ø	190	8	Up to 4 hours	Up to 3 hours
QWX225	225Ø	227Ø	190	8	Up to 4 hours	Up to 3 hours
QWX250	250Ø	252Ø	190	9	Up to 4 hours	Up to 3 hours
QWX315	315Ø	317Ø	190	11	Up to 3 hours	Up to 2 hours
QWX350	350Ø	352Ø	190	12	Up to 2 hours	Up to 3 hours*
QWX400	400Ø	402Ø	190	13	Up to 2 hours	Up to 3 hours*

*QWX350 and QWX400 achieve 3 hours, only when installed on both sides of the floor.

Technical Support & Guidance:

Should you require any further information regarding this product, please do not hesitate to contact the technical department at Quelfire Ltd.

Tel: **0161 928 7308**. Email: technical@quelfire.co.uk

Please be aware that this document is intended for general information only and all details should be checked against all relevant supporting test evidence, certification and installation guidelines.

Use of alternative components or deviations from the instructions in any way is likely to mean that the installation will not comply with the assessed rating.

Quelfire Ltd does not accept responsibility for the consequences of using Quelfire products in applications or for purposes not authorised by Quelfire Ltd. Expert advice should be sought where such applications are contemplated.

The policy of Quelfire Ltd is one of constant improvement. Details are subject to change and/or withdrawal without notification therefore you must ensure this is the latest published documentation. Whilst Quelfire will endeavour to keep its publications up to date, the accuracy of the information contained within this document may be affected by pertinent changes in the law or regulatory requirements and alterations or amendments to the specification of Quelfire products.

All information contained in this document is given in good faith and is provided for guidance only. Any drawings provided are for illustrative purposes only. As Quelfire Ltd has no control over the methods or competence of installation and of prevailing site conditions, no warranties, expressed or implied, is intended to be given as to the actual performance of the product mentioned or referred to herein and no liability whatsoever will be accepted for any loss, damage or injury arising from the use of the information given. Full terms and conditions can be accessed at: <https://quelfire.co.uk/terms-conditions-of-sale/>

MATERIAL SAFETY DATA SHEET

Product name	Quelfire QWX fire Collar
Product Code(s)	QWX200, QWX225, QWX250, QWX315, QWX350, QWX400
Revision Date	01/01/2021
Revision number	02

Section 1: Identification of the substance/mixture and of the company / undertaking

1.1. Product identifier

Product name	Quelfire QWX fire Collar
Product Code	QWX200, QWX225, QWX250, QWX315, QWX350, QWX400

1.2. Relevant identified uses of the substance or mixture and uses advised against

Not applicable

1.3. Details of the supplier of the safety data sheet

Company Name	Quelfire Limited Springvale Industrial Estate Millbuck Way Sandbach CW11 3HT
Tel	0161 928 7308
Fax	0161 924 1340
Email	technical@quelfire.co.uk

1.4. Emergency telephone number

Emergency telephone number	0161 928 7308 (Office hours only)
----------------------------	-----------------------------------

Section 2: Hazards Identification

2.1. Classification of the substance or mixture

Classification under CLP	Not Classified
--------------------------	----------------

2.2. Label elements

This product has no label elements

2.3. Other hazards

This product is not identified as a PBT/ vPvB substance

Section 3: Composition/information on ingredients

3.1. Substances

Thermoplastic element composition containing intercalated graphite in a synthetic compound with addition of fillers and process oils. Presented in a steel outer casing to form the final product.

3.2. Mixtures

No data available

Section 4: First aid measures

MATERIAL SAFETY DATA SHEET

4.1. Description of first aid measures

Skin contact	Wash thoroughly with soap and water.
Eye contact	Wash for at least 15 minutes under running water with eyelids held open, consult an eye specialist.
Ingestion	Rinse mouth immediately, do not induce vomiting, and seek immediate medical attention
Inhalation	Not applicable in solid state.

4.2. Most important symptoms and effects, both acute and delayed

Skin contact	There may be mild irritation at the site of contact
Eye contact	There may be irritation and redness
Ingestion	There may be irritation of the throat
Inhalation	N/A

4.3. Indication of any immediate medical attention and special treatment needed

Immediate/special treatment	Not applicable
-----------------------------	----------------

Section 5: Fire-Fighting measures

5.1. Extinguishing media

Suitable Extinguishing Media	Water, CO2, Foam and/ or dry powder
------------------------------	-------------------------------------

5.2. Special hazards arising from the substance or mixture

Exposure hazards	In combustion emits toxic fumes
------------------	---------------------------------

5.3. Advice for fire-fighters

Advice for fire-fighters	Suitable forms of PPE. Avoid inhalation of smoke or fumes.
--------------------------	--

Section 6: Accidental release measures

6.1. Personal precautions, protective equipment and emergency procedures

Refer to section 8 'Exposure controls/ personal protection'.
--

6.2. Environmental precautions

Environmental	Ensure materials are disposed of in accordance with local authority regulations and/ or government legislation.
---------------	---

6.3. Methods and materials for containment and cleaning up

Clean-up procedures	No special measures necessary.
---------------------	--------------------------------

6.4. Reference to other sections

Refer to section 8 'Exposure controls/ personal protection'

Section 7: Handling and storage

7.1. Precautions for safe handling

Handling requirements	Avoid the formation or spread of dust in the air Avoid handling interior composite material
-----------------------	--

7.2. Conditions for safe storage, including any incompatibilities

Storage conditions	Store dry and in a cool place (not above +35°C). Keep outreach of children.
--------------------	---

MATERIAL SAFETY DATA SHEET

	Take care for sufficient ventilation.
--	---------------------------------------

7.3. Specific end use(s)

Specific end use(s)	No data available
---------------------	-------------------

Section 8: Exposure controls/personal protection

8.1. Control parameters

No data available

8.2. Exposure controls

Respiratory protection	Not normally required. However secondary operations, such as drilling may generate dust so in these operations a suitable Respiratory protective device with particle filter should be worn
Hand protection	Not normally required
Eye protection	Not normally required
Skin protection	Not normally required

Personal protective equipment symbol(s):



Section 9: Physical and chemical properties

9.1. Information on basic physical and chemical properties

State	Solid
Colour	Black
Odour	Acidic
Explosion limits	None

9.2. Other information

Solubility – insoluble in water and generally chemical inert
--

Section 10: Stability and reactivity

10.1. Reactivity

Stable under recommended transport or storage conditions
--

10.2. Chemical stability

Stable under normal conditions

10.3. Possibility of hazardous reactions

Hazardous reactions will not occur under normal transport or storage conditions. Decomposition may occur on exposure to conditions or materials listed below.

10.4. Conditions to avoid

Thermal decomposition above +300°C.

10.5. Incompatible materials

MATERIAL SAFETY DATA SHEET

No data available

10.6. Hazardous decomposition products

Thermal decomposition, fumes contain Hydrogen Chloride. However, the activated graphite is effective at removing aromatic particles from smoke emissions.

Section 11: Toxicological information

11.1. Information on toxicological effects

Non-toxic in solid state

Section 12: Ecological information

12.1. Toxicity

No data available

12.2. Persistence and degradability

No data available

12.3. Bioaccumulative potential

No data available

12.4. Mobility in soil

No data available

12.5 Results of PBT and vPvB assessment

This product is not identified as a PBT/ vPvB substance

12.6. Other adverse effects

No data available

Section 13: Disposal considerations

13.1. Waste treatment methods

Regional legislation (waste)	Disposal must be done according to official regulations.
Waste treatment methods	Dispose of contents/ container in accordance with licensed collector's sorting instructions

Section 14: Transport information

This product does not require a classification for transport

14.6. Special Precautions for user

Overland Transport	Not Applicable
Transport by sea	Not Applicable
Air transport	Not Applicable
Inland waterway transport	Not Applicable
Rail transport	Not Applicable

Section 15: Regulatory information

15.1. Safety, health and environmental regulations/legislation specific for the substance or mixture

No additional information available

15.2. Chemical Safety Assessment

MATERIAL SAFETY DATA SHEET

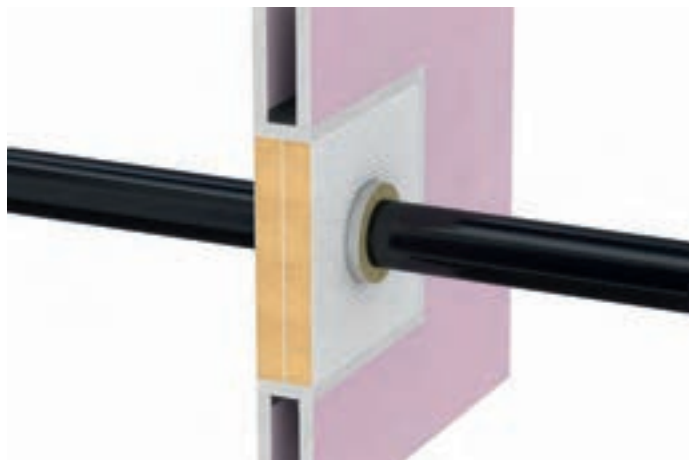
Chemical Safety Assessment	No chemical safety assessment has been carried out
----------------------------	--

Section 16: Other information

Other information	This safety data sheet is prepared in accordance with Commission Regulation (EU) No 453/2010. *indicates text in the SDS which has changed since last revision.
Legal disclaimer	The above information is believed to be correct but does not purport to be all inclusive and shall be used only as a guide. This company shall not be held liable for any damage resulting from handling or from contact with the above product.

QIF INSULATED FIRE SLEEVE INSTALLATION INSTRUCTIONS

This installation guide is intended for general information only and all details should be checked against relevant supporting test evidence and certification.



Quelfire QIF Insulated Fire Sleeves are lifesaving products designed to prevent the spread of fire where pipes penetrate fire compartment floors and walls. It is therefore essential that they are fitted in a responsible and workmanlike manner. QIF Insulated Fire Sleeve are suitable for use in concrete floors and various wall constructions including solid concrete masonry/ block walls and flexible fire rated plasterboard partitions with and without QuelStop Fire Batt. Fire ratings depend on the substrate and services so refer to the technical data and installation details for full details.

QIF are primarily made from a mineral wool material so they will provide a degree of thermal insulation and thermal movement to the pipe as it passes through the fire compartment so no extra sleeves are required. Other pipe insulations can then be jointed onto the ends of the QIF once installed.

The QIF is 25mm thick so holes should be cut or drilled at 50mm bigger than the (ID) Internal Diameter (ID) of the sleeve, refer to the table below for full details:

Quelfire Product Code	(ID) Inside diameter	To suit pipes with (OD) Outside Diameters	Approx. thickness of QIF	Recommended hole diameter
QIF17	17mm	15 to 19mm	25mm	67mm
QIF21	21mm	19 to 23mm	25mm	71mm
QIF27	27mm	25 to 29mm	25mm	77mm
QIF34	34mm	32 to 36mm	25mm	84mm
QIF42	42mm	40 to 44mm	25mm	92mm
QIF48	48mm	46 to 50mm	25mm	98mm
QIF54	54mm	52 to 56mm	25mm	104mm
QIF60	60mm	58 to 62mm	25mm	110mm
QIF67	67mm	65 to 69mm	25mm	117mm
QIF76	76mm	74 to 78mm	25mm	126mm
QIF80	80mm	78 to 82mm	25mm	130mm
QIF89	89mm	87 to 91mm	25mm	139mm
QIF102	102mm	100 to 104mm	25mm	152mm
QIF108	108mm	106 to 110mm	25mm	158mm
QIF114	114mm	112 to 116mm	25mm	164mm
QIF127	127mm	125 to 129mm	25mm	177mm
QIF140	140mm	138 to 142mm	25mm	190mm
QIF159	159mm	157 to 161mm	25mm	209mm

Installation principles of the Quelfire QIF Insulated Fire Sleeve

Whilst the QIF can be installed in different scenarios some basic installation principles apply.

- 1.** Once the correct diameter hole has been achieved and the correct QIF Insulated Fire Sleeve has been identified, check the pipe and penetration are clean of debris and there are no obstructions or sharp edges.



- 2.** Check the required length of the sleeve and where required cut to length with a sharp knife.



- 3.** Where the end of the pipe is accessible, the QIF can be simply slid onto the pipe. Alternatively, to retrofit the QIF, follow the following steps:

- 3.a** Cut one side of the QIF along its length with a sharp knife,



- 3.b** Open up the QIF and feed it around the pipe,



- 3.c** Wrap the QIF tight around the pipe, butting the cut ends up together again,



- 3.d** Seal with the self-adhesive foil tape supplied with the QIF.



QIF INSULATED FIRE SLEEVE INSTALLATION INSTRUCTIONS

- 4.** The QIF Insulated Fire Sleeve can then be slid along the pipe into the substrate.



- 5.** Ensure that the minimum protrusions are achieved – check both sides.



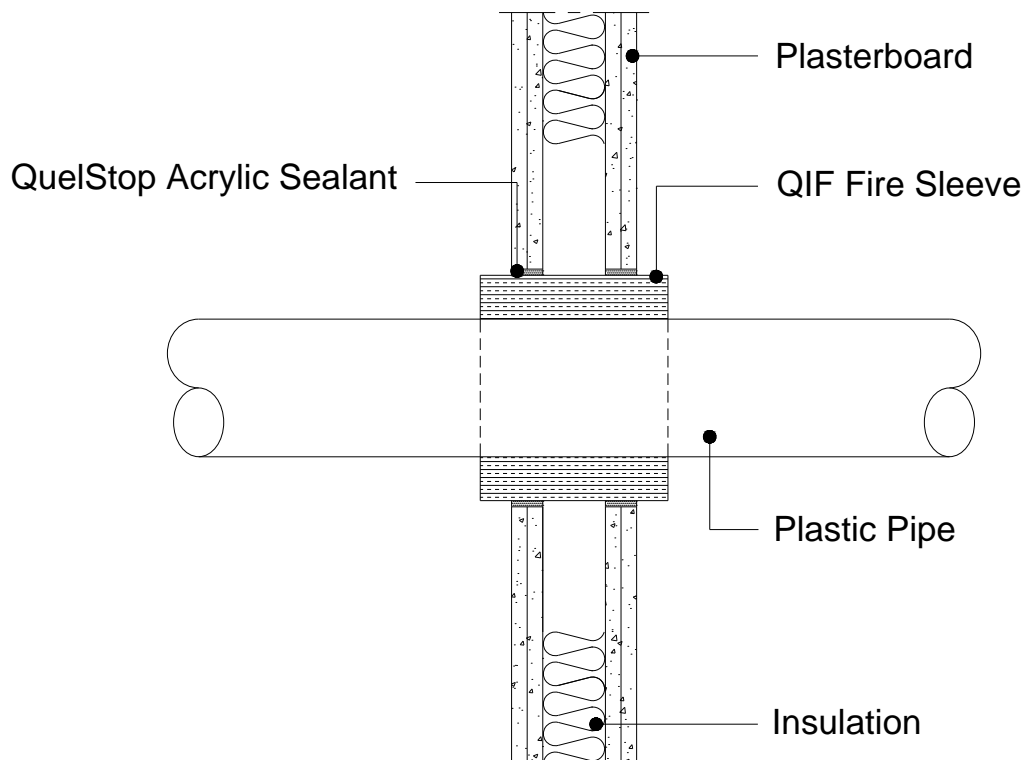
- 6.** Seal around the perimeter of the QIF where it meets the substrate with QuelStop Intumescent Acrylic Sealant.



- 7.** Where the pipes are required to be insulated, this can now be butted up to the QIF Insulated Fire Sleeve and sealed in accordance with manufacturer's recommendations.

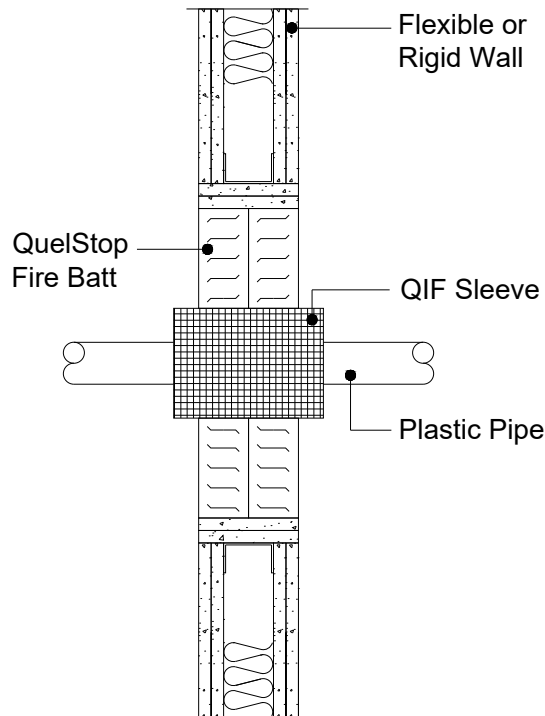
Example Installation 1 – Direct to flexible or rigid walls

Drill the hole in accordance with the details provided in the table above which is 50mm bigger than the (ID) Internal Diameter of the proposed QIF Insulated Fire Sleeve then install as described above ensuring the minimum required protrusion is achieved on both sides of the wall and finally seal both sides of the wall with QuelStop Intumescent Acrylic Sealant.



Example Installation 2 – In conjunction with QuelStop Fire Batt

In the case of oversized holes or formed letterboxes, depending on the services, it may be possible to use the QIF Insulated Fire Sleeve in conjunction with a double layer of QuelStop Fire Batt. In these cases the QIF should be installed first as described above however before finally positioning and sealing in place the double layer of QuelStop Fire Batt should be installed in accordance with separate supporting documentation.



Packaging & Storage:

Quelfire QIF Insulated Fire Sleeves are supplied individually to suit specific pipe diameters and may be packaged in cardboard boxes for shipping purposes and should be stored in a cool, dry location.

Health & Safety:

QIF Insulated Fire Sleeves consist of a mineral fibre mixed with polymers and a reactive graphite. No special measures are required other than we recommend wearing gloves and a dust mask to avoid irritation from any fibres that may be released especially during cutting.

For further information, please refer to the Material Safety Data Sheets, available on request or via the website.

Technical Support & Guidance:

Should you require any further information regarding this product, please do not hesitate to contact the technical department at Quelfire Ltd.

Tel: 0161 928 7308. Email: technical@quelfire.co.uk

Please be aware that this document is intended for general information only and all details should be checked against all relevant supporting test evidence, certification and installation guidelines. Use of alternative components or deviations from the instructions in any way is likely to mean that the installation will not comply with the assessed rating.

Quelfire Ltd does not accept responsibility for the consequences of using Quelfire products in applications or for purposes not authorised by Quelfire Ltd. Expert advice should be sought where such applications are contemplated.

The policy of Quelfire Ltd is one of constant improvement. Installers should therefore ensure they are working from the latest published drawings and instructions. Whilst Quelfire will endeavour to keep its publications up to date, the accuracy of the information contained within this drawing may be affected by pertinent changes in the law or regulatory requirements and alterations or amendments to the specification of Quelfire products.

All information contained in this document is given in good faith and is provided for guidance only. Any drawings provided are for illustrative purposes only. As Quelfire Ltd has no control over the methods or competence of installation and of prevailing site conditions, no warranties, expressed or implied, is intended to be given as to the actual performance of the product mentioned or referred to herein and no liability whatsoever will be accepted for any loss, damage or injury arising from the use of the information given.

QIF Insulated Fire Sleeve prevents the spread of fire where combustible (plastic) and non-combustible (metal) pipes penetrate fire compartment walls and floors.



QIF Insulated Fire Sleeves



QIF Insulated Fire Sleeve installed in a wall penetration

FEATURES & BENEFITS

- Tested to BSEN 1366-3: 2009
- Up to 4 hour fire rating
- Suitable for plasterboard partitions and concrete floors and walls
- Suitable for 15 to 160mm diameter pipes
- Can be retrofitted
- Suitable for plastic pipes
- Suitable for metal pipes
- Type X Durability
- Suitable for use in conjunction with the QuelStop Fire Batt System
- Maintains thermal insulation of the pipe
- Allows thermal movement of the pipe
- No additional sleeving required
- Simple and quick to install, no mechanical fixing required
- Supplied as a 300mm length and can be cut to length

COMPOSITION

The QIF Insulated Fire Sleeves is supplied as a 300mm long sleeve and consists of a reinforced foil containing an insulating mineral fibre and graphite intumescent material which reacts under the influence of heat to exert pressure on the penetration.

As plastic pipes soften the intumescent forms a carbonaceous char, crushing the melting pipe and forming a plug, likewise, when used around non-combustible metal pipes, the intumescent will char around the pipe and prevent fire passing through to the adjoining compartment.

APPLICATION / INSTALLATION

The QIF Insulated Fire Sleeve can be used around both metal and plastic pipes.

QIF Insulated Fire Sleeve are suitable for use in concrete floors and various wall constructions including solid concrete masonry/block walls and flexible fire rated plasterboard partitions with and without QuelStop Fire Batt.

Fire ratings depend on the substrate and services so refer to the technical data and installation details for full details.

The QIF are primarily made from a mineral wool material so they will provide a degree of thermal insulation and thermal movement to the pipe as it passes through the fire compartment so no extra sleeves are required. Other pipe insulations can then be jointed onto the ends of the QIF once installed.

The QIF is approx. 25mm thick so holes should be cut or drilled at 50mm bigger than the Internal Diameter (ID) of the sleeve, refer to the table below for full details:

Quelfire Product Code	(ID) Inside diameter	To suit pipes with (OD) Outside Diameters	Approx. thickness of QIF	Recommended hole diameter
QIF17	17mm	15 to 19mm	25mm	67mm
QIF21	21mm	19 to 23mm	25mm	71mm
QIF27	27mm	25 to 29mm	25mm	77mm
QIF34	34mm	32 to 36mm	25mm	84mm
QIF42	42mm	40 to 44mm	25mm	92mm
QIF48	48mm	46 to 50mm	25mm	98mm
QIF54	54mm	52 to 56mm	25mm	104mm
QIF60	60mm	58 to 62mm	25mm	110mm
QIF67	67mm	65 to 69mm	25mm	117mm
QIF76	76mm	74 to 78mm	25mm	126mm
QIF80	80mm	78 to 82mm	25mm	130mm
QIF89	89mm	87 to 91mm	25mm	139mm
QIF102	102mm	100 to 104mm	25mm	152mm
QIF108	108mm	106 to 110mm	25mm	158mm
QIF114	114mm	112 to 116mm	25mm	164mm
QIF127	127mm	125 to 129mm	25mm	177mm
QIF140	140mm	138 to 142mm	25mm	190mm
QIF159	159mm	157 to 161mm	25mm	209mm

The QIF should be installed centrally within the substrate and although can be cut down in length must be either flush or protruding with a minimum required length depending on a number of factors so refer to the relevant documentation before commencing installation.

A set of installation details and an installation guide is available, however, installation of the QIF Insulated Fire Sleeve is simple, requiring no mechanical fixings and can be retrofitted around the pipe or simply slid on to the end like a sleeve during pipe installation.

To retrofit, the sleeve must be first cut along its length with a sharp knife, it can then be opened up and fed around the pipe where it must be then wrapped tight again and sealed with the self-adhesive foil tape that is provided with the QIF.

Provided the hole in the substrate has been drilled accurately, the QIF Insulated Fire Sleeve can then be slid along the pipe into position, ensuring that the minimum protrusions where required on both sides are achieved, and then finally sealed in place with QuelStop Intumescent Acrylic Sealant.

A set of installation details and an installation guide is available.

PERFORMANCE

QIF Insulated Fire Sleeves are suitable for use in in both floors and walls with plastic, copper and steel pipes and have been tested up to 4 hours integrity. They have also been tested in conjunction with QuelStop Fire Batt seals.

Installation and performance details are dependent on a number of variables such as insulation and supporting construction etc so as always the product must be installed in accordance with the specific installation details which are available from the Quelfire Technical Team. A broad summary of results can be summarised as follows:

Service Type	Diameter of pipe	Minimum substrate details	Minimum length of sleeve	Length of protrusion either side	Fire rating - Integrity	Fire rating - Insulation
Walls:						
UPVC Pipes	15-160mm	132mm flexible or rigid wall	180mm	24mm	Up to 120 minutes	Up to 120 minutes
HDPE Pipes	15-160mm	132mm flexible or rigid wall	180mm	24mm	Up to 120 minutes	Up to 120 minutes
Metal Pipes	15mm	132mm flexible or rigid wall	150mm	9mm	Up to 120 minutes	Up to 120 minutes
Metal Pipes	16-159mm	132mm flexible or rigid wall	150mm	9mm	Up to 120 minutes	Up to 30 minutes
UPVC Pipes	15-110mm	150mm rigid wall	150mm	0mm	Up to 240 minutes	Up to 240 minutes
UPVC Pipes	40-110mm	Double QuelStop Fire Batt in 100mm flexible or rigid wall	150mm	25mm	Up to 120 minutes	Up to 90 minutes
Floors:						
UPVC Pipes	15-40mm	150mm concrete floor	150mm	0mm	Up to 120 minutes	Up to 120 minutes
HDPE Pipes	15-160mm	150mm concrete floor	150mm	0mm	Up to 120 minutes	Up to 120 minutes
UPVC Pipes	15-160mm	150mm concrete floor	175mm	25mm*	Up to 120 minutes	Up to 120 minutes
*25mm protrusion required to underside of floor only.						

Technical Support & Guidance:

Should you require any further information regarding this product, please do not hesitate to contact the technical department at Quelfire Ltd.

Tel: **0161 928 7308**. Email: technical@quelfire.co.uk

Please be aware that this document is intended for general information only and all details should be checked against all relevant supporting test evidence, certification and installation guidelines.

Use of alternative components or deviations from the instructions in any way is likely to mean that the installation will not comply with the assessed rating.

Quelfire Ltd does not accept responsibility for the consequences of using Quelfire products in applications or for purposes not authorised by Quelfire Ltd. Expert advice should be sought where such applications are contemplated.

The policy of Quelfire Ltd is one of constant improvement. Details are subject to change and/or withdrawal without notification therefore you must ensure this is the latest published documentation. Whilst Quelfire will endeavour to keep its publications up to date, the accuracy of the information contained within this document may be affected by pertinent changes in the law or regulatory requirements and alterations or amendments to the specification of Quelfire products.

All information contained in this document is given in good faith and is provided for guidance only. Any drawings provided are for illustrative purposes only. As Quelfire Ltd has no control over the methods or competence of installation and of prevailing site conditions, no warranties, expressed or implied, is intended to be given as to the actual performance of the product mentioned or referred to herein and no liability whatsoever will be accepted for any loss, damage or injury arising from the use of the information given. Full terms and conditions can be accessed at: <https://quelfire.co.uk/terms-conditions-of-sale/>

DECLARATION OF PERFORMANCE

According to Annex III of Regulation (EU) Nr. 305/2011 (Construction Products Regulation)

QUELFIRE QRS – FIRE SLEEVES

1. **Unique identification code of the product-type:**
Quelfire QRS Fire Sleeves
2. **Type, batch or serial number as required pursuant to Article 11(4):**
See batch number displayed on the product
3. **Intended use or uses of the construction product, in accordance with the applicable harmonised technical specification:**
Fire stopping and sealing Product for Penetration Seals, see ETA 20/1206

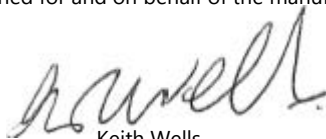
Pipe penetrations	Plastic pipes	The field of application has to comply with the content of the related ETA 20/1206
-------------------	---------------	---

4. **Name, registered trade name or registered trademark and contact address as required pursuant to Article 11(5):** Quelfire Ltd, Unit 3, Millbuck Way, Springvale Industrial Estate, Sandbach, Cheshire, CW11 3HT, Tel: 0161 928 7308, Email: sales@quelfire.co.uk
5. **Authorised representative:** n.a.
6. **System or systems of assessment and verification of constancy of performance of the construction product as set out in Annex V:** System 1
7. **Harmonised standard:** n.a.
8. **In the case of the declaration of performance concerning product covered by a Harmonised Standard and/or ETA:** Warrington Certification Ltd issued ETA Number 20/1206 on the basis of Guideline for European Technical Approval of Fire Stopping and Fire Sealing Products: EAD 350454-00-1104 Issue September 2017 performed initial and continuous surveillance of the place of manufacture and the factory production control implemented, sampled product and witnessed initial type testing under system 1 and issued the Certificate of Constancy of Performance 2812-CPR-JA5102
9. **Declared performance:**

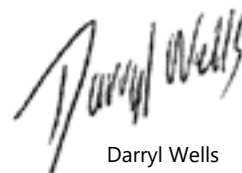
Essential Characteristic	Declared performance/Harmonised technical specification
Reaction to fire	Class F according to EN 13501-1, see ETA 20/1206 Clause 3.1.1
Resistance to fire	Resistance to fire performance and field application in accordance with EN 13501-2, see ETA 20/1206 Clause 3.1.2
Dangerous substances	See ETA 20/1206 Clause 3.2.1
Durability and serviceability	Type: X intended for use in conditions exposed to weathering in accordance with EAD 350454-00-1104, EOTA Technical Report – TR024 see ETA 20/1206 Clause 3.3.1
Other	Not applicable/No performance determined

10. **The performance of the product identified in points 1 and 2 is in conformity with the declared performance in point 6. This declaration of performance is issued under the sole responsibility of the manufacturer identified in point 4.**

Signed for and on behalf of the manufacturer.



Keith Wells
Managing Director
Quelfire Ltd



Darryl Wells
Product Development
Quelfire Ltd

Notified Body No. 2812

Certificate of Constancy of Performance

2812-CPR- JA5102

In compliance with *Regulation 305/2011/EU of the European Parliament and of the Council of 9 March 2011* (the Construction Products Regulation or CPR), this certificate applies to the construction product:

QRS Sleeves

Intended use: Penetration Seals

Essential characteristics	Performance according to	Technical specification
Reaction to fire	ETA 20/1206	EAD 350454-00-1104 Issue: September 2017 Fire Stopping and Fire Sealing Products: Penetration Seals
Resistance to fire		
Dangerous substances		

Certificate of Constancy of Performance

2812-CPR- JA5102

Placed on the Market under the Name of

**QUELFIRE LTD
Unit 3 Millbuck Way
Springvale Industrial Estate
Sandbach
Cheshire
CW11 3HT**

and produced in the manufacturing plant

E/230

This is coded format and the information is held by the Notified Body

This certificate attests that all provisions concerning the Assessment and Verification of Constancy of Performance described in:

ETA 20/1206 issued on 16/12/2020

And

EAD 350454-00-1104

Under System 1 for the performance set out in the ETA are applied and that the Factory Production Control conducted by the manufacturer is assessed to ensure the Constancy of Performance of the Construction Product.

This certificate was first issued on 23/11/2020 and revised on 20/07/2021 and will remain valid as long as neither the ETA, the EAD, the Construction Product, the AVCP methods nor the manufacturing conditions in the plant are modified significantly, or unless suspended or withdrawn by the Notified Product Certification Body.

Valid to: **26/08/2023**

ERO Project Reference: **ERO 034621 P1109**



Paul Duggan
Certification Manager

CSF406-NL 6.0

QRS CE Marked Intumescent Fire Sleeves prevent the spread of fire where plastic ducts penetrate fire compartment walls.



QRS CE Marked Intumescent Fire Sleeve - rectangular



QRS CE Marked Intumescent Fire Sleeve installed in plasterboard partition

FEATURES & BENEFITS

- ❑ CE Marked
- ❑ Tested to BSEN 1366-3: 2009 and classified according to EN 13501-2: 2007 + A1: 2009
- ❑ Tested with Uncapped / Uncapped (U/U) duct configurations as required for ventilation ducts
- ❑ Up to 2 hour fire rating
- ❑ Suitable for masonry walls or plasterboard partitions
- ❑ Suitable for insulated and non-insulated partitions
- ❑ Suitable for use in QuelStop Fire Batt
- ❑ Can be retrofitted
- ❑ No mechanical fixings required
- ❑ Robust galvanised steel shell
- ❑ Performance unaffected by weathering (Type X Durability)
- ❑ Can be installed as a cluster with multiple ducts
- ❑ Can be installed in conjunction with the QuelStop Fire Batt system



The Warringtonfire Logo displayed is the trademark of Warringtonfire registered in the United Kingdom. The Warringtonfire Logo is evidence that the products denoted as 'Tested by Warringtonfire' were tested to BSEN 1366-3: 2009 in England between September 22nd 2015 and January 7th 2021



This product is CE Marked.*

*QRS90, QRS130 and QRS110 are not currently CE Marked

COMPOSITION

The QRS Fire Sleeve consists of a continuous pressed steel shell containing a high performance graphite based intumescent material which reacts under the influence of heat to exert pressure on the plastic vent duct as it softens to form a carbonaceous char which provides an effective insulation plug thus preventing fire passing through to the adjoining compartment.

The QRS is manufactured specifically to suit differing sizes and diameters of duct and is supplied ready to be fitted into the wall with an opening lid for retrofitting.

DURABILITY

Tested to Type X durability which means the QRS CE Marked Intumescent Fire Sleeves can be installed in conditions exposed to weathering.



QRS CE Marked Intumescent Fire Sleeve - circular



QRS CE Marked Intumescent Fire Sleeve (circular) installed around semi-rigid duct in plasterboard partition

APPLICATION / INSTALLATION

Quelfire QRS CE Marked Intumescent Fire Sleeves should be used where a plastic ventilation duct penetrates a fire rated wall to maintain the compartmentation in the event of a fire.

The QRS requires no mechanical fixing or framework support, they rely on the fire rated wall construction, plasterboard or solid masonry/block (or QuelStop Fire Batt) to hold it in place so the penetrations should be cut as tight as possible to the QRS Fire Sleeve itself, suggested approximate apertures sizes are given in the "performance" table below.

For the simplest installation, the QRS Fire Sleeve should be installed around the duct and then the wall installed tight around the QRS, however, they can be retrofitted into the wall too.

Simply hinge open the lid, feed around the duct, wrap tight and close the lid, secure shut with the self-adhesive tape supplied (or self tapping screw in the case of circular fire sleeves) and then slide the QRS along the duct into the wall construction.



The QRS should be installed centrally positioned within the wall and must be either flush or protruding from both sides of the wall in accordance with the relevant installation detail.

Once installed into the wall, in the correct position, the perimeter should be sealed with QuelStop Intumescent Acoustic Acrylic Sealant.

Where oversize hole or letterboxes with other services are formed then the QRS Fire Sleeve can be installed in conjunction with the QuelStop Fire Batt system having been tested in various wall constructions including with multiple ducts/QRS stacked or side by side.

Where a cluster of ducts/QRS are installed the QRS should be tight to each other, alternatively they need to be far enough apart to suitably install QuelStop Fire Batt or the original wall construction, all in accordance with the specific installation detail and tested scope of application.

Typical installation details for the QRS Fire Sleeve

A full set of installation details and a step by step guide are available and we recommend you check all available data before commencing installation.

For full details of the tested scope of application and for installation details, please contact the Quelfire Technical Team.

PERFORMANCE

QRS CE Marked Fire Sleeves are suitable for use around plastic ventilation ducts and are tested to BSEN 1366-3: 2009 and classified according to EN 13501-2: 2007 + A1: 2009 up to 2 hours integrity. For full details and performance information contact the Quelfire Technical Team. A summary of results is as follows:

Product Code	Duct Size (mm)	Approx. space needed around duct to fit QRS Fire Sleeve (mm)	Recommended approx. aperture (mm)	QRS length (mm)	Fire Rating
QRS110/54	110 x 54	13	135 x 78	180	Up to 120 minutes
QRS205/60	205 x 60	13	230 x 85	180	Up to 120 minutes
QRS220/90	220 x 90	22	262 x 132	140	Up to 120 minutes
QRS75	75 Ø semi-rigid	8	90 Ø	140	Up to 120 minutes
QRS90*	90 Ø semi-rigid	13	116 Ø	140	Up to 120 minutes
QRS110*	100 Ø	18	135 Ø	180	Up to 120 minutes
QRS130*	125 Ø	23	170 Ø	180	Up to 90 minutes

*QRS90, QRS130 and QRS110 are not currently CE Marked

Technical Support & Guidance:

Should you require any further information regarding this product, please do not hesitate to contact the technical department at Quelfire Ltd.

Tel: **0161 928 7308**. Email: technical@quelfire.co.uk

Please be aware that this document is intended for general information only and all details should be checked against all relevant supporting test evidence, certification and installation guidelines.

Use of alternative components or deviations from the instructions in any way is likely to mean that the installation will not comply with the assessed rating.

Quelfire Ltd does not accept responsibility for the consequences of using Quelfire products in applications or for purposes not authorised by Quelfire Ltd. Expert advice should be sought where such applications are contemplated.

The policy of Quelfire Ltd is one of constant improvement. Details are subject to change and/or withdrawal without notification therefore you must ensure this is the latest published documentation. Whilst Quelfire will endeavour to keep its publications up to date, the accuracy of the information contained within this document may be affected by pertinent changes in the law or regulatory requirements and alterations or amendments to the specification of Quelfire products.

All information contained in this document is given in good faith and is provided for guidance only. Any drawings provided are for illustrative purposes only. As Quelfire Ltd has no control over the methods or competence of installation and of prevailing site conditions, no warranties, expressed or implied, is intended to be given as to the actual performance of the product mentioned or referred to herein and no liability whatsoever will be accepted for any loss, damage or injury arising from the use of the information given. Full terms and conditions can be accessed at: <https://quelfire.co.uk/terms-conditions-of-sale/>

QRS CE MARKED INTUMESCENT SLIM FIRE SLEEVES

QRS CE Marked Intumescent Slim Fire Sleeves prevent the spread of fire where plastic ducts penetrate fire compartment walls. They are specifically designed to be slim for applications where there is limited space around the duct.



QRS CE Marked Intumescent Slim Fire Sleeve



QRS CE Marked Intumescent Slim Fire Sleeve installed in plasterboard partition

FEATURES & BENEFITS

- ❑ CE Marked
- ❑ Tested to BSEN 1366-3: 2009 and classified according to EN 13501-2: 2007 + A1: 2009
- ❑ Tested with Uncapped/Uncapped (U/U) duct configurations as required for ventilation ducts
- ❑ Up to 2 hour fire rating
- ❑ Very slim-line (saves ceiling space)
- ❑ Suitable for masonry walls or plasterboard partitions
- ❑ Suitable for insulated and non-insulated partitions
- ❑ Can be retrofitted
- ❑ No mechanical fixings required
- ❑ Robust galvanised steel shell
- ❑ Performance unaffected by weathering (Type X Durability)
- ❑ Can be installed as a cluster with multiple ducts
- ❑ Can be installed in conjunction with the QuelStop Fire Batt system



The Warringtonfire Logo displayed is the trademark of Warringtonfire registered in the United Kingdom. The Warringtonfire Logo is evidence that the products denoted as 'Tested by Warringtonfire' were tested to BSEN 1366-3: 2009 in England between September 22nd 2015 and January 7th 2021



This product is CE Marked.

COMPOSITION

The QRS Slim Fire Sleeve consists of a continuous pressed steel shell containing a high performance graphite based intumescent material which reacts under the influence of heat to exert pressure on the plastic vent duct as it softens to form a carbonaceous char which provides an effective insulation plug thus preventing fire passing through to the adjoining compartment.

The QRS Slim Fire Sleeve is an alternative to the QRS Fire Sleeve offering a reduced fire rating in some instances and is manufactured to suit 3 common sizes of rectangular plastic vent duct and is supplied ready to be fitted into the wall with an opening lid for retrofitting.

DURABILITY

Tested to Type X durability which means the QRS CE Marked Intumescent Slim Fire Sleeves can be installed in conditions exposed to weathering.

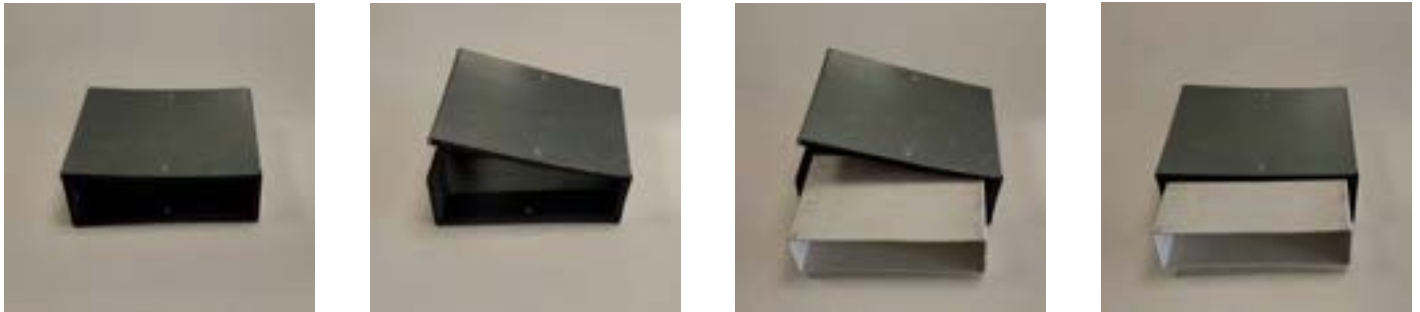
APPLICATION / INSTALLATION

Quelfire QRS CE Marked Intumescent Slim Fire Sleeves should be used where a plastic ventilation duct penetrates a fire rated wall to maintain the compartmentation in the event of a fire.

The QRS requires no mechanical fixing or framework support, they rely on the fire rated wall construction, plasterboard or solid masonry/block (or QuelStop Fire Batt) to hold it in place so the penetrations should be cut as tight as possible to the QRS Slim Fire Sleeve itself, suggested approximate apertures sizes are given in the "performance" table below.

For the simplest installation, the QRS Slim Fire Sleeve should be installed around the duct and then the wall installed tight around the QRS, however, they can be retrofitted into the wall too.

Simply hinge open the lid, feed around the duct, wrap tight and close the lid, secure shut with the self-adhesive tape supplied and then slide the QRS along the duct into the wall construction.



The QRS Slim Fire Sleeve should be installed centrally positioned within the wall and must be either flush or protruding from both sides of the wall in accordance with the relevant installation detail.

Once installed into the wall, in the correct position, the perimeter should be sealed with QuelStop Intumescent Acoustic Acrylic Sealant.

Where oversize hole or letterboxes with other services are formed then the QRS Slim Fire Sleeve can be installed in conjunction with the QuelStop Fire Batt system having been tested in various wall constructions including with multiple ducts/QRS stacked or side by side.

Where a cluster of ducts/QRS are installed the QRS should be tight to each other, alternatively they need to be far enough apart to suitably install QuelStop Fire Batt or the original wall construction, all in accordance with the specific installation detail and tested scope of application.

Typical installation details for the QRS Slim Fire Sleeve

A full set of installation details and a step by step guide are available and we recommend you check all available data before commencing installation.

For full details of the tested scope of application and for installation details, please contact the Quelfire Technical Team.

PERFORMANCE

QRS CE Marked Slim Sleeves are suitable for use around plastic ventilation ducts and are tested to BSEN 1366-3: 2009 and classified according to EN 13501-2: 2007 + A1: 2009 up to 2 hours integrity. For full details and performance information contact the Quelfire Technical Team. A summary of results is as follows:

Product Code	Duct Size (mm)	Approx. space needed around duct to fit QRS Slim Fire Sleeve (mm)	Recommended approx. aperture (mm)	QRS length (mm)	Fire Rating
QRS110/54SS	110 x 54	8	126 x 70	140	Up to 120 minutes
QRS204/60SS	204 x 60	8	219 x 75	140	Up to 90 minutes
QRS220/90SS	220 x 90	12	244 x 114	140	Up to 60 minutes

Technical Support & Guidance:

Should you require any further information regarding this product, please do not hesitate to contact the technical department at Quelfire Ltd.

Tel: **0161 928 7308**. Email: technical@quelfire.co.uk

Please be aware that this document is intended for general information only and all details should be checked against all relevant supporting test evidence, certification and installation guidelines.

Use of alternative components or deviations from the instructions in any way is likely to mean that the installation will not comply with the assessed rating.

Quelfire Ltd does not accept responsibility for the consequences of using Quelfire products in applications or for purposes not authorised by Quelfire Ltd. Expert advice should be sought where such applications are contemplated.

The policy of Quelfire Ltd is one of constant improvement. Details are subject to change and/or withdrawal without notification therefore you must ensure this is the latest published documentation. Whilst Quelfire will endeavour to keep its publications up to date, the accuracy of the information contained within this document may be affected by pertinent changes in the law or regulatory requirements and alterations or amendments to the specification of Quelfire products.

All information contained in this document is given in good faith and is provided for guidance only. Any drawings provided are for illustrative purposes only. As Quelfire Ltd has no control over the methods or competence of installation and of prevailing site conditions, no warranties, expressed or implied, is intended to be given as to the actual performance of the product mentioned or referred to herein and no liability whatsoever will be accepted for any loss, damage or injury arising from the use of the information given. Full terms and conditions can be accessed at: <https://quelfire.co.uk/terms-conditions-of-sale/>

MATERIAL SAFETY DATA SHEET

Product name	Quelfire QRS Fire Sleeves
Product Code(s)	QRS110/54, QRS205/60, QRS220/90, QRS75, QRS90, QRS110, QRS130, QRS110/54SS, QRS204/60SS, QRS220/90SS
Revision Date	01/01/2021
Revision number	02

Section 1: Identification of the substance/mixture and of the company / undertaking

1.1. Product identifier

Product name	Quelfire QRS Fire Sleeves
Product Code	QRS110/54, QRS205/60, QRS220/90, QRS75, QRS90, QRS110, QRS130, QRS110/54SS, QRS204/60SS, QRS220/90SS

1.2. Relevant identified uses of the substance or mixture and uses advised against

Not applicable

1.3. Details of the supplier of the safety data sheet

Company Name	Quelfire Limited Springvale Industrial Estate Millbuck Way Sandbach CW11 3HT
Tel	0161 928 7308
Fax	0161 924 1340
Email	technical@quelfire.co.uk

1.4. Emergency telephone number

Emergency telephone number	0161 928 7308 (Office hours only)
----------------------------	-----------------------------------

Section 2: Hazards Identification

2.1. Classification of the substance or mixture

Classification under CLP	Not Classified
--------------------------	----------------

2.2. Label elements

This product has no label elements

2.3. Other hazards

This product is not identified as a PBT/ vPvB substance

Section 3: Composition/information on ingredients

3.1. Substances

Thermoplastic sheet composition containing intercalated graphite in a synthetic compound with the addition of filters and process oils. The intumescent element is contained within a metal sleeve.

3.2. Mixtures

No data available

Section 4: First aid measures

4.1. Description of first aid measures

☎ 0161 928 7308	✉ sales@quelfire.co.uk	🌐 www.quelfire.co.uk
-----------------	--	--

MATERIAL SAFETY DATA SHEET

Skin contact	It is possible that handling of the composite interior could cause skin irritation, in which case first rinse with water and remove fragments of the composite material, then wash with plenty of soap and water. Do not use organic solvents.
Eye contact	Rinse with water and seek medical attention.
Ingestion	If ingested do not induce vomiting, seek medical attention
Inhalation	Consult a doctor

4.2. Most important symptoms and effects, both acute and delayed

Skin contact	There may be mild irritation at the site of contact
Eye contact	There may be irritation and redness
Ingestion	There may be irritation of the throat
Inhalation	There may be irritation of the throat with a feeling of tightness in the chest.

4.3. Indication of any immediate medical attention and special treatment needed

Immediate/special treatment	Not applicable
-----------------------------	----------------

Section 5: Fire-Fighting measures

5.1. Extinguishing media

Suitable Extinguishing Media	Water, CO2, Foam and/ or dry powder
------------------------------	-------------------------------------

5.2. Special hazards arising from the substance or mixture

Exposure hazards	In combustion emits toxic fumes
------------------	---------------------------------

5.3. Advice for fire-fighters

Advice for fire-fighters	Wear self-contained breathing apparatus. Wear suitable proactive clothing to prevent contact with skin and eyes
--------------------------	---

Section 6: Accidental release measures

6.1. Personal precautions, protective equipment and emergency procedures

Refer to section 8 'Exposure controls/ personal protection'.
--

6.2. Environmental precautions

Environmental	Do not discharge into drains or rivers.
---------------	---

6.3. Methods and materials for containment and cleaning up

Clean-up procedures	Wash the spillage site with large amounts of water.
---------------------	---

6.4. Reference to other sections

Refer to section 8 'Exposure controls/ personal protection'

Section 7: Handling and storage

7.1. Precautions for safe handling

Handling requirements	Avoid the formation or spread of dust in the air
-----------------------	--

MATERIAL SAFETY DATA SHEET

	Avoid handling interior composite material
--	--

7.2. Conditions for safe storage, including any incompatibilities

Storage conditions	Store in cool, well ventilated area.
--------------------	--------------------------------------

7.3. Specific end use(s)

Specific end use(s)	No data available
---------------------	-------------------

Section 8: Exposure controls/personal protection

8.1. Control parameters

No data available

8.2. Exposure controls

Respiratory protection	Not normally required. However secondary operations, such as drilling may generate dust so in these operations a suitable Respiratory protective device with particle filter should be worn
Hand protection	Protective gloves
Eye protection	Safety glasses. Ensure eye bath is to hand.
Skin protection	Protective clothing

Personal protective equipment symbol(s):



Section 9: Physical and chemical properties

9.1. Information on basic physical and chemical properties

State	Solid
Odour	Odourless

9.2. Other information

Solubility – insoluble in water and generally chemical inert
--

Section 10: Stability and reactivity

10.1. Reactivity

Stable under recommended transport or storage conditions
--

10.2. Chemical stability

Stable under normal conditions

10.3. Possibility of hazardous reactions

Hazardous reactions will not occur under normal transport or storage conditions. Decomposition may occur on exposure to conditions or materials listed below.

10.4. Conditions to avoid

MATERIAL SAFETY DATA SHEET

Heat

10.5. Incompatible materials

Strong oxidising agents. Strong acids

10.6. Hazardous decomposition products

In combustion emits toxic fumes

Section 11: Toxicological information

11.1. Information on toxicological effects

Non-toxic in solid state

Section 12: Ecological information

12.1. Toxicity

No data available

12.2. Persistence and degradability

Biodegradable

12.3. Bioaccumulative potential

Not potentially Bioaccumulative

12.4. Mobility in soil

No data available

12.5 Results of PBT and vPvB assessment

This product is not identified as a PBT/ vPvB substance

12.6. Other adverse effects

Negligible ecotoxicity

Section 13: Disposal considerations

13.1. Waste treatment methods

Regional legislation (waste)	Disposal must be done according to official regulations.
Waste treatment methods	Dispose of contents/ container in accordance with licensed collector's sorting instructions

Section 14: Transport information

This product does not require a classification for transport

14.6. Special Precautions for user

Overland Transport	Not Applicable
Transport by sea	Not Applicable
Air transport	Not Applicable
Inland waterway transport	Not Applicable
Rail transport	Not Applicable

Section 15: Regulatory information

15.1. Safety, health and environmental regulations/legislation specific for the substance or mixture

MATERIAL SAFETY DATA SHEET

No additional information available

15.2. Chemical Safety Assessment

Chemical Safety Assessment	No chemical safety assessment has been carried out
----------------------------	--

Section 16: Other information

Other information	This safety data sheet is prepared in accordance with Commission Regulation (EU) No 453/2010.
Legal disclaimer	The above information is believed to be correct but does not purport to be all inclusive and shall be used only as a guide. This company shall not be held liable for any damage resulting from handling or from contact with the above product.

QRS Fire Sleeve & QRS Slim Fire Sleeve INSTALLATION INSTRUCTIONS

This installation guide is intended for general information only and all details should be checked against relevant supporting test evidence and certification.



Quelfire QRS Fire Sleeves are lifesaving products designed to prevent the spread of fire where plastic vent ducts penetrate fire compartment walls. It is therefore essential that they are fitted in a responsible and workmanlike manner.

QRS Fire Sleeves are suitable for use in various wall constructions including solid concrete masonry/block walls and flexible fire rated plasterboard partitions with and without the QuelStop Fire Batt system. Fire ratings vary depending on the substrate and services so refer to the technical data and installation details for full details.

Apertures for the QRS should be cut or drilled as tight as practically possible to suit the external dimensions of the QRS Fire Sleeve. Suggested aperture sizes are provided in the table below and we would always recommend carrying out a trial on site:

Product Code	Duct Size (mm)	Approx. space needed around duct to fit QRS Fire Sleeve (mm)	Recommended approx. aperture (mm)
QRS110/54	110 x 54	13	135 x 78
QRS205/60	205 x 60	13	230 x 85
QRS220/90	220 x 90	22	262 x 132
QRS75	75 Ø semi-rigid	8	90 Ø
QRS90*	90 Ø semi-rigid	13	116 Ø
QRS110*	100 Ø	18	135 Ø
QRS130*	125 Ø	23	170 Ø
QRS110/54SS	110 x 54	8	126 x 70
QRS204/60SS	204 x 60	8	219 x 75
QRS220/90SS	220 x 90	12	244 x 114

*QRS90, QRS130 and QRS110 are not currently CE Marked

Gaps around the installed QRS Fire Sleeve should not exceed 5mm and can therefore be sealed with QuelStop Intumescent Acrylic Sealant.

The QRS can be retrofitted but is dependent on being able to cut the right size aperture within the wall substrate which may be easier to achieve without the duct in position.

The normal and easier installation is to build the wall around the QRS Fire Sleeve and duct.

Installation principles of the Quelfire QRS Fire Sleeve

- 1.** Once the correct diameter hole or aperture has been achieved within the wall and the correct QRS Fire Sleeve has been identified, check the duct and penetration are clean of debris and there are no obstructions that would prevent the QRS being slid into position.
- 2.** Hinge open the QRS Fire Sleeve and wrap tight around the plastic vent duct.
- 3.** Secure the lid of the QRS shut with the self-adhesive tape fitted to the rectangular versions (or the self tapping screw supplied with circular versions).
- 4.** The QRS Fire Sleeve can then be slid along the duct into the substrate.
- 5.** Ensure that the QRS Fire Sleeve is centrally positioned within the wall and that the face of the QRS is either flush or protruding from the substrate in accordance with the specific installation detail – check both sides.
- 6.** Seal around the perimeter of the QRS where it meets the substrate with QuelStop Intumescent Acrylic Sealant.
- 7.** Where the duct is required to be insulated, this can now be butted up to the QRS Fire Sleeve and sealed in accordance with manufacturer's recommendations.

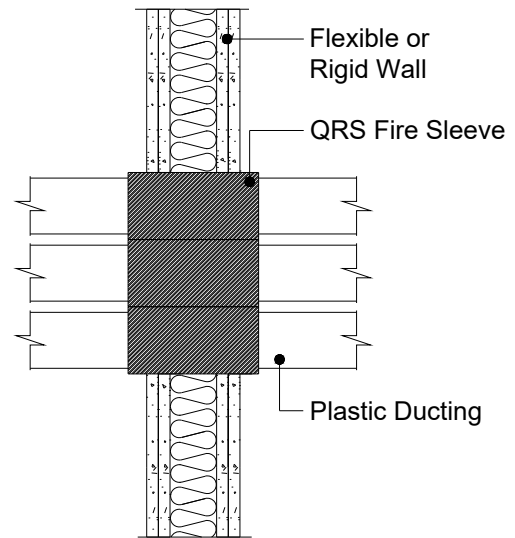
Example Installation 1 – Direct to flexible or rigid walls

Drill or cut the hole in accordance with the details provided in the table above then install as described above ensuring the minimum required protrusion is achieved on both sides of the wall and finally seal both sides of the wall with QuelStop Intumescent Acrylic Sealant.



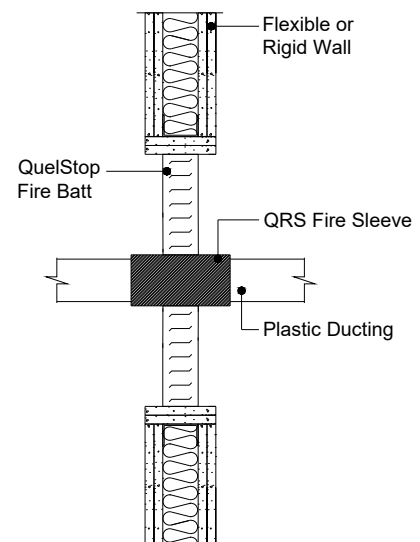
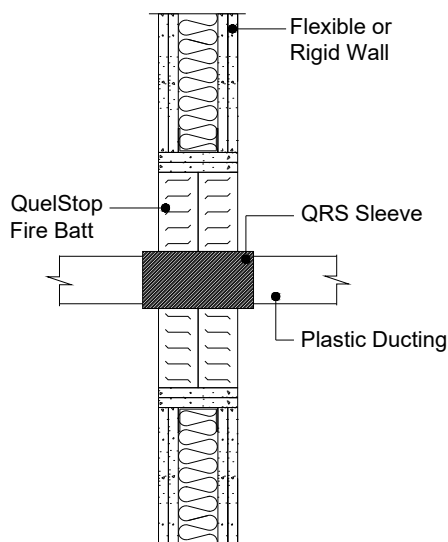
Example Installation 2 - Multiple (stacked/side-by-side/cluster) ducts

Multiple ducts/QRS can be installed as a cluster and the QRS should be installed in accordance with the details given above. Once finally positioned, the QRS should be touching, 0mm between each, and sealed around the perimeter. If the QRS are not touching then they need to be far enough apart so as to be able to practically and robustly install and seal the sleeve in the original wall construction or QuelStop Fire Batt. 50mm is usually regarded as an absolute minimum space, but 100mm is much more practical.



Example Installation 3 - In conjunction with QuelStop Fire Batt

In the case of oversized holes or formed letterboxes, depending on the services, it may be possible to use the QRS Fire Sleeve in conjunction with a single or double layer of QuelStop Fire Batt. In these cases, the QRS should be installed first as described above and then during final positioning and before sealing in place, the QuelStop Fire Batt should be installed in accordance with separate supporting documentation.



Packaging & Storage:

Quelfire QRS Fire Sleeves are supplied individually to suit specific vent duct sizes and may be packaged in cardboard boxes for shipping purposes and should be stored in a cool, dry location.

Health & Safety:

QRS CE Marked Fire Sleeves consist of a pressed stainless steel shell containing graphite in a synthetic compound with the addition of filters and process oils.

The steel shells can have sharp edges, always wear gloves when handling.

For further information, please refer to the Material Safety Data Sheets, available on request or via the website.

Technical Support & Guidance:

Should you require any further information regarding this product, please do not hesitate to contact the technical department at Quelfire Ltd.

Tel: **0161 928 7308**. Email: technical@quelfire.co.uk

Please be aware that this document is intended for general information only and all details should be checked against all relevant supporting test evidence, certification and installation guidelines. Use of alternative components or deviations from the instructions in any way is likely to mean that the installation will not comply with the assessed rating.

Quelfire Ltd does not accept responsibility for the consequences of using Quelfire products in applications or for purposes not authorised by Quelfire Ltd. Expert advice should be sought where such applications are contemplated.

The policy of Quelfire Ltd is one of constant improvement. Installers should therefore ensure they are working from the latest published drawings and instructions. Whilst Quelfire will endeavour to keep its publications up to date, the accuracy of the information contained within this drawing may be affected by pertinent changes in the law or regulatory requirements and alterations or amendments to the specification of Quelfire products.

All information contained in this document is given in good faith and is provided for guidance only. Any drawings provided are for illustrative purposes only. As Quelfire Ltd has no control over the methods or competence of installation and of prevailing site conditions, no warranties, expressed or implied, is intended to be given as to the actual performance of the product mentioned or referred to herein and no liability whatsoever will be accepted for any loss, damage or injury arising from the use of the information given.

MATERIAL SAFETY DATA SHEET

Product name	QuelCast CE Marked Cast In Fire Collar
Product Code(s)	QUELCAST50, QUELCAST110, QUELCAST160
Revision Date	01/01/2021
Revision number	02

Section 1: Identification of the substance/mixture and of the company / undertaking

1.1. Product identifier

Product name	QuelCast CE Marked Cast In Fire Collar
Product Code	QUELCAST50, QUELCAST110, QUELCAST160

1.2. Relevant identified uses of the substance or mixture and uses advised against

Not applicable

1.3. Details of the supplier of the safety data sheet

Company Name	Quelfire Limited Springvale Industrial Estate Millbuck Way Sandbach CW11 3HT
Tel	0161 928 7308
Fax	0161 924 1340
Email	technical@quelfire.co.uk

1.4. Emergency telephone number

Emergency telephone number 0161 928 7308 (Office hours only)

Section 2: Hazards Identification

2.1. Classification of the substance or mixture

Classification under CLP Not Classified

2.2. Label elements

This product has no label elements

2.3. Other hazards

This product is not identified as a PBT/ vPvB substance

Section 3: Composition/information on ingredients

3.1. Substances

Thermoplastic sheet composition containing intercalated graphite in a synthetic compound with the addition of filters and process oils. The intumescent element is contained within a Plastic shell.

3.2. Mixtures

No data available

Section 4: First aid measures

MATERIAL SAFETY DATA SHEET

4.1. Description of first aid measures

Skin contact	It is possible that handling of the composite interior could cause skin irritation, in which case first rinse with water and remove fragments of the composite material, then wash with plenty of soap and water. Do not use organic solvents.
Eye contact	Rinse with water and seek medical attention.
Ingestion	If ingested do not induce vomiting, seek medical attention
Inhalation	Consult a doctor

4.2. Most important symptoms and effects, both acute and delayed

Skin contact	There may be mild irritation at the site of contact
Eye contact	There may be irritation and redness
Ingestion	There may be irritation of the throat
Inhalation	There may be irritation of the throat with a feeling of tightness in the chest.

4.3. Indication of any immediate medical attention and special treatment needed

Immediate/special treatment	Not applicable
-----------------------------	----------------

Section 5: Fire-Fighting measures

5.1. Extinguishing media

Suitable Extinguishing Media	Water, CO2, Foam and/ or dry powder
------------------------------	-------------------------------------

5.2. Special hazards arising from the substance or mixture

Exposure hazards	In combustion emits toxic fumes
------------------	---------------------------------

5.3. Advice for fire-fighters

Advice for fire-fighters	Wear self-contained breathing apparatus. Wear suitable proactive clothing to prevent contact with skin and eyes
--------------------------	---

Section 6: Accidental release measures

6.1. Personal precautions, protective equipment and emergency procedures

Refer to section 8 'Exposure controls/ personal protection'.
--

6.2. Environmental precautions

Environmental	Do not discharge into drains or rivers.
---------------	---

6.3. Methods and materials for containment and cleaning up

Clean-up procedures	Wash the spillage site with large amounts of water.
---------------------	---

6.4. Reference to other sections

Refer to section 8 'Exposure controls/ personal protection'

Section 7: Handling and storage

7.1. Precautions for safe handling

Handling requirements	Avoid the formation or spread of dust in the air Avoid handling interior composite material
-----------------------	--

7.2. Conditions for safe storage, including any incompatibilities

Storage conditions	Store in cool, well ventilated area.
--------------------	--------------------------------------

MATERIAL SAFETY DATA SHEET

7.3. Specific end use(s)

Specific end use(s)	No data available
---------------------	-------------------

Section 8: Exposure controls/personal protection

8.1. Control parameters

No data available

8.2. Exposure controls

Respiratory protection	Not normally required. However secondary operations, such as drilling may generate dust so in these operations a suitable Respiratory protective device with particle filter should be worn
Hand protection	Protective gloves
Eye protection	Safety glasses. Ensure eye bath is to hand.
Skin protection	Protective clothing

Personal protective equipment symbol(s):



Section 9: Physical and chemical properties

9.1. Information on basic physical and chemical properties

State	Solid
Odour	Odourless

9.2. Other information

Solubility – insoluble in water and generally chemical inert
--

Section 10: Stability and reactivity

10.1. Reactivity

Stable under recommended transport or storage conditions
--

10.2. Chemical stability

Stable under normal conditions

10.3. Possibility of hazardous reactions

Hazardous reactions will not occur under normal transport or storage conditions. Decomposition may occur on exposure to conditions or materials listed below.

10.4. Conditions to avoid

Heat

10.5. Incompatible materials

Strong oxidising agents. Strong acids

10.6. Hazardous decomposition products

MATERIAL SAFETY DATA SHEET

In combustion emits toxic fumes

Section 11: Toxicological information

11.1. Information on toxicological effects

Non-toxic in solid state

Section 12: Ecological information

12.1. Toxicity

No data available

12.2. Persistence and degradability

Biodergradable

12.3. Bioaccumulative potential

Not potentially Bioaccumulative

12.4. Mobility in soil

No data available

12.5 Results of PBT and vPvB assessment

This product is not identified as a PBT/ vPvB substance

12.6. Other adverse effects

Negligible ecotoxicity

Section 13: Disposal considerations

13.1. Waste treatment methods

Regional legislation (waste)	Disposal must be done according to official regulations.
Waste treatment methods	Dispose of contents/ container in accordance with licensed collector's sorting instructions

Section 14: Transport information

This product does not require a classification for transport

14.6. Special Precautions for user

Overland Transport	Not Applicable
Transport by sea	Not Applicable
Air transport	Not Applicable
Inland waterway transport	Not Applicable
Rail transport	Not Applicable

Section 15: Regulatory information

15.1. Safety, health and environmental regulations/legislation specific for the substance or mixture

No additional information available

15.2. Chemical Safety Assessment

MATERIAL SAFETY DATA SHEET

Chemical Safety Assessment	No chemical safety assessment has been carried out
----------------------------	--

Section 16: Other information

Other information	This safety data sheet is prepared in accordance with Commission Regulation (EU) No 453/2010. *indicates text in the SDS which has changed since last revision.
Legal disclaimer	The above information is believed to be correct but does not purport to be all inclusive and shall be used only as a guide. This company shall not be held liable for any damage resulting from handling or from contact with the above product.

TABLE OF CONTENTS

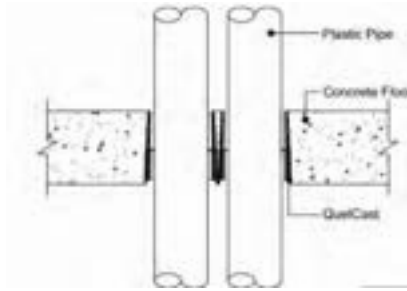
Dimensions and Setting Out	Page 2
QuelCast110 dimensions	Page 2
QuelCast160 dimensions	Page 3
QuelCast50 dimensions	Page 3
QuelCast Manifold dimensions	Page 4
QuelCast step-by-step installation guide	Page 5
Extending a QuelCast to suit slab of greater than 250mm	Page 10
Reducing a QuelCast to suit slab of less than 250mm	Page 10
Manifold Recess Former step by step installation guide	Page 11
Cable or small diameter pipe installation guide	Page 12



QUELCAST DIMENSIONS AND SETTING OUT INFORMATION:

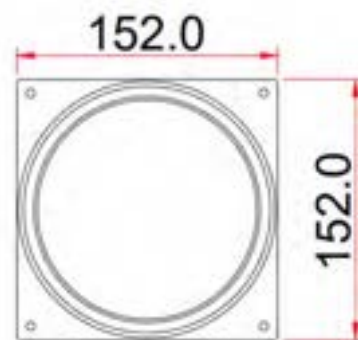
The standard product height is 250mm to suit 250mm deep slabs but can be reduced or extended, see latter section of this document for details.

They can be installed with 0mm between each base as a cluster – see Installation Detail QC-CF150-04:



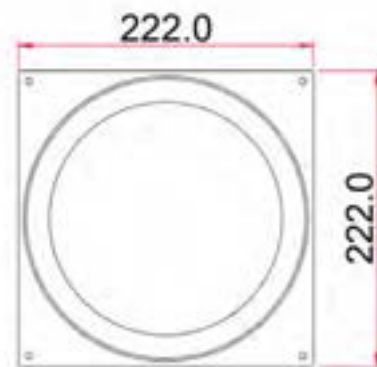
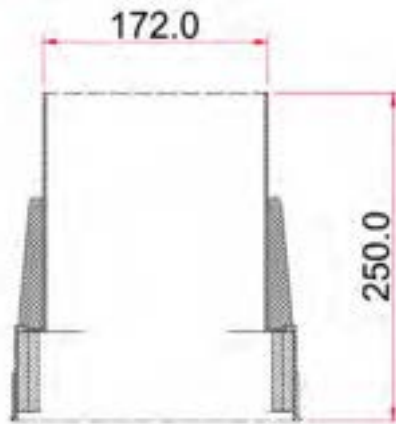
QuelCast110:

Base dimensions: 152mm x 152mm.



QuelCast160:

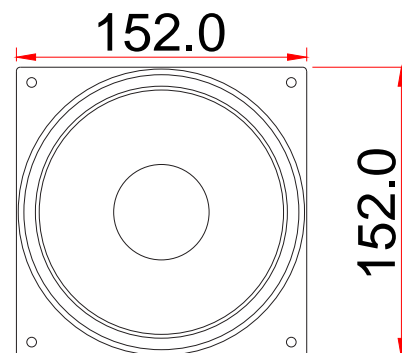
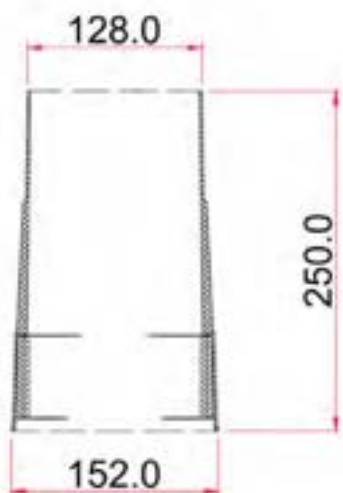
Base dimensions: 222mm x 222mm.



QuelCast50:

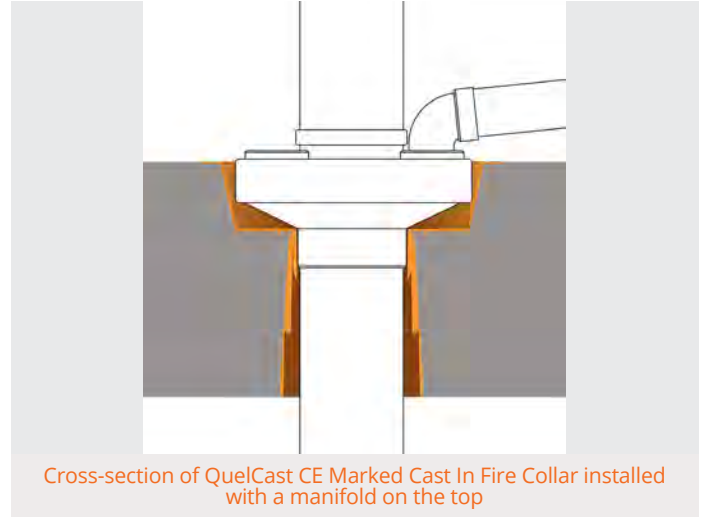
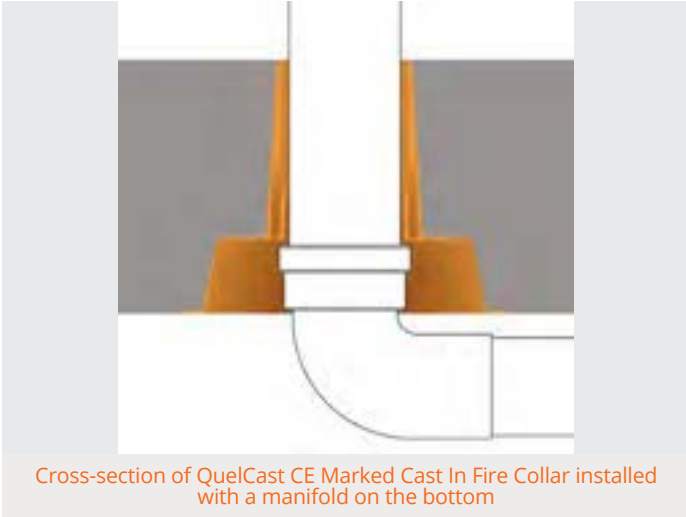
Base dimensions: 152mm x 152mm.

Please note that the base dimensions of the QuelCast50 and QuelCast110 are identical.



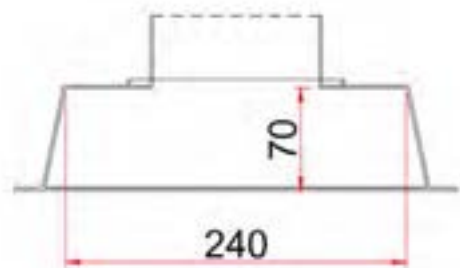
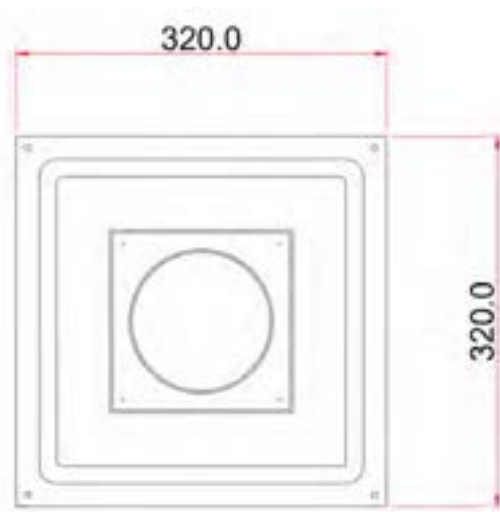
QuelCast Manifold Recess Former:

The QuelCast Manifold Recess Former facilitates the recessing of pipe fittings with the slab by creating an oversized hole, either on the top or underside of the slab:



Base dimensions for setting out purposes: 320mm x 320mm.

Intended void creation of approx. 240mm x 240mm x 70mm deep.



QuelCast Installation Instructions

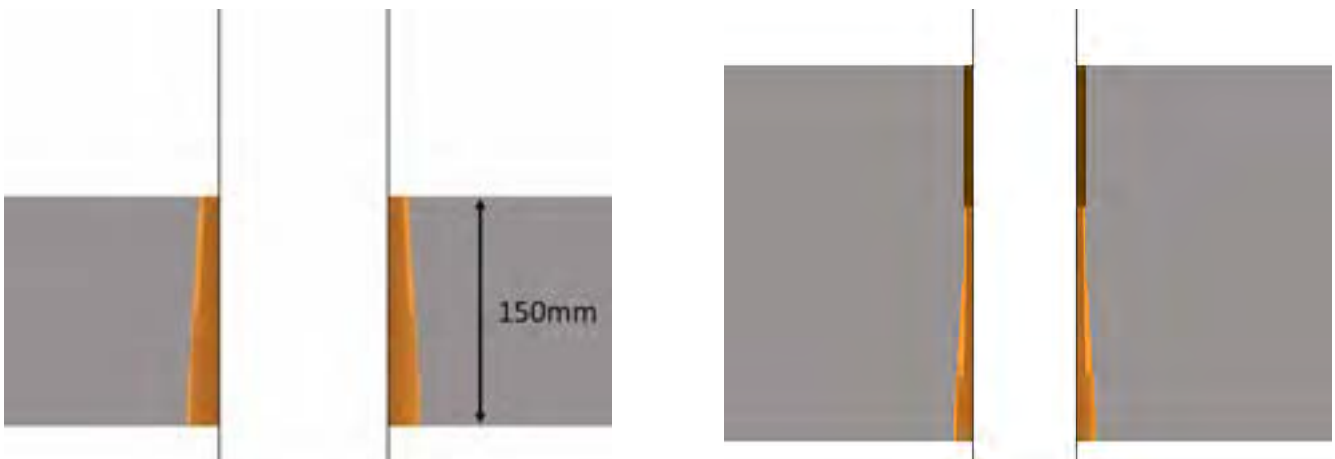
This installation guide is intended for general information only and all details should be checked against relevant supporting test evidence and certification.

1. Select the correct size QuelCast to suit the pipe diameter and specification in accordance with the relevant technical product data available. Typically the following options are available:

QuelCast160	To suit pipe diameters of up to 160mm.
QuelCast110	To suit pipe diameters of up to 110mm.
QuelCast50	To suit pipe diameters of up to 50mm.

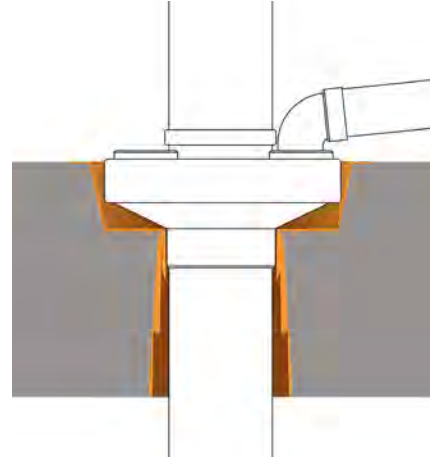
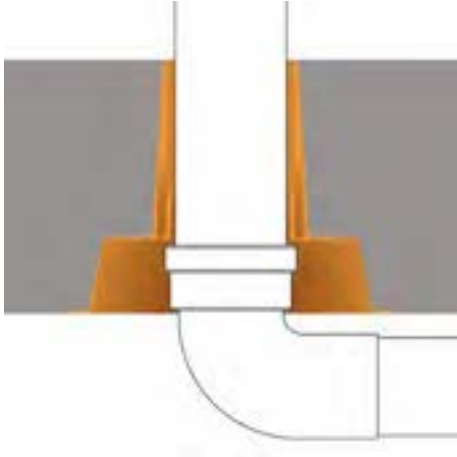


2. Check the required concrete slab depth. The standard QuelCast is 250mm high to suit a 250mm deep concrete slab. For guidance on how to reduce or extend the QuelCast please refer to the latter section: "Installation instruction for reducing or extending a QuelCast to suit differing slab depths".



QuelCast CE Marked Cast In Fire Collar DIMENSIONS & INSTALLATION GUIDE

- 3.** Check whether a QuelCast Manifold Recess Former is required to suit pipe fittings either on the top or underside of the concrete slab. Adjust and/or fit the Manifold as required – refer to latter section: “Installation instruction for fitting a Manifold Recess Former to QuelCast Cast In Fire Collar”.



- 4.** Mark the shuttering formwork with a cross where the pipe is to pass through the floor.



- 5.** Select the correct QuelCast to suit the required pipe diameter



- 6.** Position the QuelCast Cast In Fire Collar over the cross using the centre line marker points to align the unit.



- 7.** Multiple products can be positioned side by side or in a cluster with the bases touching.



- 8.** Fix the QuelCast to the formwork using suitable nails/screws through the preformed holes in the 4 corners.



- 9.** Position reinforcing bar and pour concrete as specified.



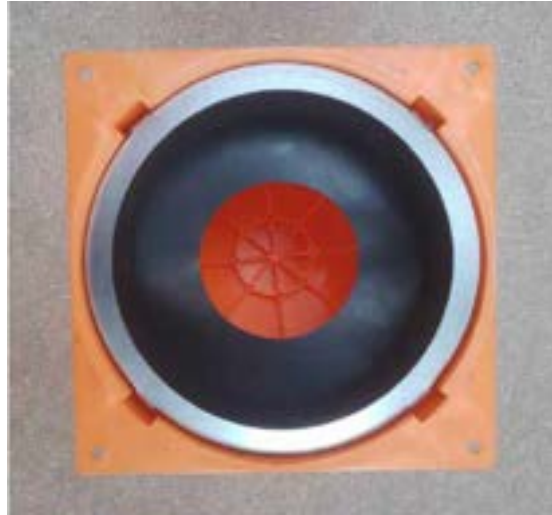
- 10.** Once cured, remove the shuttering formwork – note that the corners of the QuelCast may break off depending on the fixings used – this does not affect the performance of the product and is in fact to facilitate easy removal of the shuttering formwork.



- 11.** When the pipework is ready to be installed, remove the robust cap which is designed to provide a safe working surface until removed.



- 12.** Insert pipe taking care not to damage or dislodge the rubber smoke seal located inside the QuelCast.



- 13.** Job done! No extra work, backfill or sealant is required where the correct diameter pipe is used in the correct QuelCast. For QuelCast50 and where smaller diameter pipes are used inside larger collars then refer to the latter section of this document.



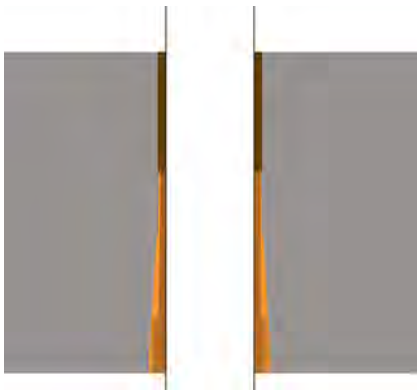
DIFFERING SLAB DEPTH:

The standard QuelCast is 250mm high to suit a 250mm deep concrete slab but they can be reduced or extended to suit differing slab depth – this is a service that Quelfire offer in house so that the product is delivered to site ready to install however it can be done on site too.

Installation instruction for extending a QuelCast to suit a slab of more than 250mm depth:

The QuelCast can be fitted with extension tubes to suit slab depths of greater than 250mm – this is a service that Quelfire offer in house so that the product is delivered to site ready to install however it can be done on site too as follows:

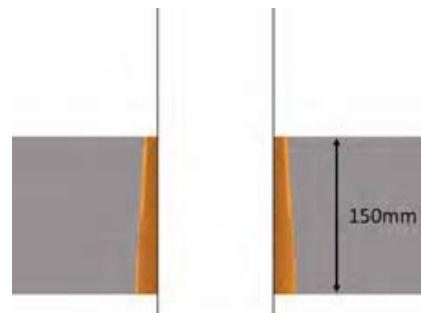
- ❌ Remove the cap,
- ❌ Select correct diameter extension tube and insert onto the QuelCast pushing down until fully seated,
- ❌ Measure up from the base of the QuelCast to the correct slab depth height,
- ❌ Cut the extension tube with a sharp saw or knife,
- ❌ Replace the cap,
- ❌ Finally, we recommend sealing the cap with self-adhesive tape to ensure no seepage.



Installation instruction for reducing a QuelCast to suit a slab depth of between 250mm and 150mm:

The QuelCast can be cut down to suit slab depths of as little as 150mm - this is a service that Quelfire offer in house so that the product is delivered to site ready to install however it can be done on site too as follows:

- ❌ Remove the cap,
- ❌ Cut the top of the QuelCast with a saw,
- ❌ Replace the cap,
- ❌ Finally, we recommend sealing the cap with self-adhesive tape to ensure no seepage.



Installation instruction for fitting a Manifold Recess Former to a QuelCast Cast In Fire Collar

A.



A - On the Top:

- 1. Remove the cap,
- 2. Cut/extend the QuelCast body to suit the slab depth as required taking into consideration the depth of the Manifold Recess Former,
- 3. Push the Manifold Recess Former onto the QuelCast Collar until fully seated,
- 4. Ensure the temporary infill is in place and sealed with self-adhesive tape.
- 5. Secure the complete unit as normal.

B.



B - On the Underside:

- 1. Cut the spigot off the Manifold,
- 2. Position the QuelCast within the indentation marks,
- 3. Secure the QuelCast to the Manifold Recess Former using steel self-tapping screws,
- 4. Position and secure the complete unit as described for the main QuelCast using the centre line locator marks and preformed fixing holes.

Installation instruction for backfilling around pipes/cables:

Where a 110mm diameter pipe is used in a QuelCast110 and a 160mm diameter in a QuelCast160, no extra work, backfill or sealant is required.



Where a smaller diameter pipe is used such as a 75mm diameter in a QuelCast110 and always in the case of a QuelCast50 and cable bunches, a 45kg/m³ rockfibre insulation



should be used to pack around the pipe. This should be installed within the QuelCast, above the rubber smoke seal up to the top of the concrete floor slab.



Technical Support & Guidance:

Should you require any further information regarding this product, please do not hesitate to contact the technical department at Quelfire Ltd.

Tel: **0161 928 7308**. Email: technical@quelfire.co.uk

Please be aware that this document is intended for general information only and all details should be checked against all relevant supporting test evidence, certification and installation guidelines

Use of alternative components or deviations from the instructions in any way is likely to mean that the installation will not comply with the assessed rating.

Quelfire Ltd does not accept responsibility for the consequences of using Quelfire products in applications or for purposes not authorised by Quelfire Ltd. Expert advice should be sought where such applications are contemplated.

The policy of Quelfire Ltd is one of constant improvement. Installers should therefore ensure they are working from the latest published drawings and instructions. Whilst Quelfire will endeavour to keep its publications up to date, the accuracy of the information contained within this drawing may be affected by pertinent changes in the law or regulatory requirements and alterations or amendments to the specification of Quelfire products.

All information contained in this document is given in good faith and is provided for guidance only. Any drawings provided are for illustrative purposes only. As Quelfire Ltd has no control over the methods or competence of installation and of prevailing site conditions, no warranties, expressed or implied, is intended to be given as to the actual performance of the product mentioned or referred to herein and no liability whatsoever will be accepted for any loss, damage or injury arising from the use of the information given.

QUELCAST CE MARKED CAST IN FIRE COLLAR

QuelCast CE Marked Cast In Fire Collars prevent the spread of fire through plastic pipe and cable penetrations in concrete floors.



QuelCast CE Marked Cast In Fire Collar



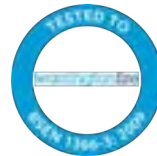
QuelCast CE Marked Cast In Fire Collar Installed in concrete floor

FEATURES & BENEFITS

- Up to 4 hour fire rating (EI240)
- Suitable for PVC, PVC-U, PE, HDPE, MDPE & PP pipes
- Available to suit 50mm, 110mm & 160mm pipes
- Performance unaffected by weathering (Type X Durability)
- Quick & simple installation
- Integrated smoke seal
- Strong lid to carry foot traffic and light access equipment
- No backfilling generally required
- Compact footprint allows for closer positioning of pipes
- Suitable for 150mm or thicker concrete slabs

STANDARDS & APPROVALS

- Fire resistance testing to BS EN 1366-3:2009
- CE Marked
- EI60, EI120, EI180, EI240
- Classified to EN 13501-2: 2007 + A1: 2009



The Warringtonfire Logo displayed is the trademark of Warringtonfire registered in the United Kingdom. The Warringtonfire Logo is evidence that the products denoted as 'Tested by Warringtonfire' were tested to BSEN 1366-3: 2009 in England between September 22nd 2015 and January 7th 2021



This product is CE Marked.

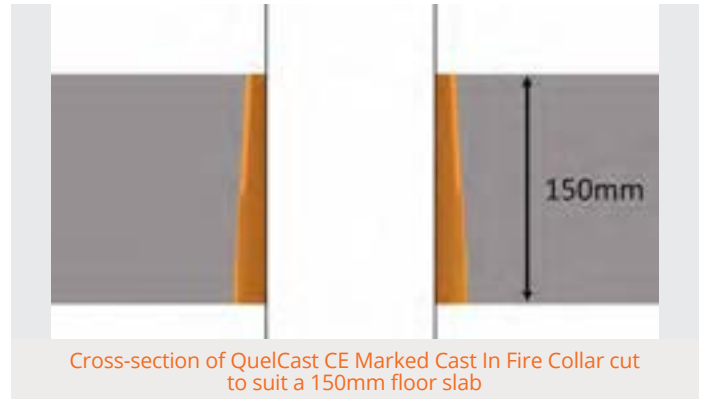
COMPOSITION

QuelCast CE Marked Fire Collars are constructed from a robust polypropylene material and contain a high performance intumescent material which reacts under the influence of heat. This will exert pressure on the pipe as it softens, to form a carbonaceous char which provides an effective insulation plug thus preventing smoke and fire passing through to the adjoining compartment.

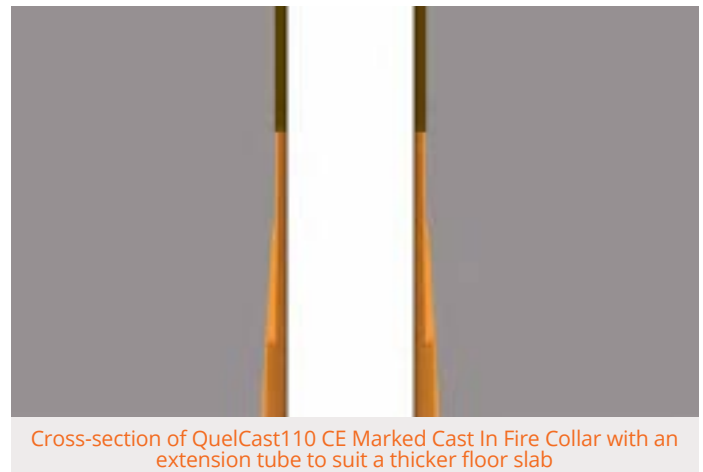
APPLICATION

The standard QuelCast is 250mm high to suit a 250mm deep concrete slab but they can be reduced or extended to suit differing slab depths – this is a service that Quelfire offer in house so that the product is delivered to site ready to install, however it can be done on site too.

For instances where the slab depth is between 250 and 150mm, the process is: Remove the cap, Cut the top off with a saw, replace the cap and finally, we recommend sealing the cap with self-adhesive tape to ensure no concrete seepage.



For instances where the slab depth is greater than 250mm the QuelCast is fitted with an extension tube. To install these the process is: Remove the cap, insert the tube over the QuelCast body pushing down until fully seated, measure up from the base, cut the extension tube with a sharp saw or knife, replace the cap and finally, we recommend sealing the cap with self-adhesive tape to ensure no seepage.



Simple installation steps:

1. Mark the formwork with a cross where the pipe is to pass through the floor
2. Position the QuelCast CE Marked Cast In Fire Collar as required (the centre line marks on the QuelCast Collars and Manifold help to position in the correct location)
3. Attach to the formwork using screws or nails through the holes in the 4 corners of the unit
4. Pour the concrete to the required depth
5. On completion of concrete curing, remove all formwork and shuttering
6. Remove the cap from the top of the QuelCast Collar
7. Place the pipe through the QuelCast Collar

Additional instructions for QuelCast50:

No extra work, backfill or sealant is required where the correct diameter pipe is used in the correct QuelCast. For QuelCast50, cable bunches and where smaller diameter pipes are used inside larger collars a mineral wool smoke seal backfill is required in the top of the QuelCast.

For 110mm diameter pipes inside a QuelCast110 and 160mm in a QuelCast160, no backfill is required.

For more in depth installation information request the QuelCast Installation guide from the Technical team –

technical@quelfire.co.uk

QuelCast Manifold Recess Former

The QuelCast Manifold has been designed and developed to create a 70 mm recess in the floor slab either on the top or on the bottom of the floor slab to allow for applications where there is limited ceiling space and so the plastic pipe can be installed closer to the ceiling with the pipe connection recessed in the slab.

For example:

- 🔧 Shower traps for walk-in showers and wet rooms
- 🔧 Soil pipe manifolds
- 🔧 Pipe connections
- 🔧 Limited ceiling space



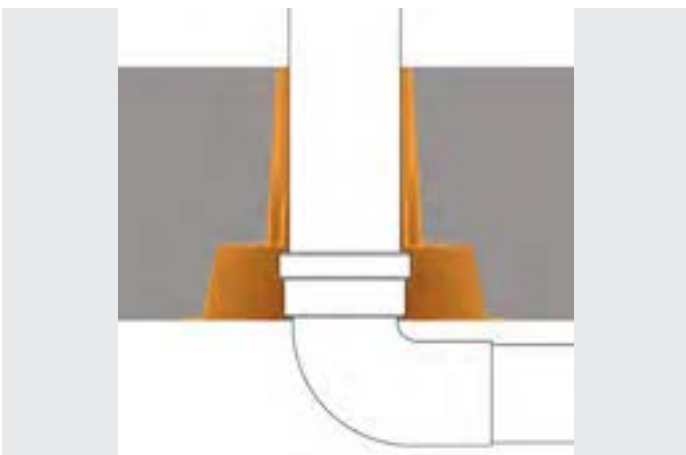
QuelCast Cast CE Marked Cast In Fire Collar installed with a manifold on the bottom



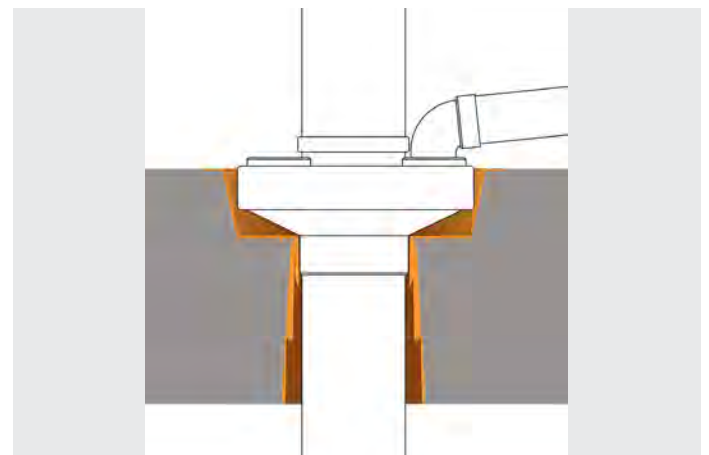
QuelCast CE Marked Cast In Fire Collar with a manifold on the top

When installing a QuelCast Manifold Recess Former to the underside of the slab the process is: cut the spigot off the manifold, position the QuelCast on the manifold within the indentations, secure together using self tapping screws through each corner of the QuelCast body and then install as a whole unit using the centre line indicators on the Manifold Recess Former as a guide instead of the QuelCast.

When installing a QuelCast Manifold Recess Former on the top of the slab, the process is: remove the cap, cut/extend the QuelCast body to suit the slab depth taking into consideration the depth of the Manifold Recess Former, push the Manifold onto the QuelCast until fully seated, ensure the temporary shuttering infill is in place and sealed with tape and then install the whole unit as normal.



Cross-section of QuelCast CE Marked Cast In Fire Collar installed with a manifold on the bottom



Cross-section of QuelCast CE Marked Cast In Fire Collar installed with a manifold on the top

PERFORMANCE

Product Code	Description	To suit	Qty. Per Box	Fire Rating
QUELCAST50	QuelCast50 Cast In Fire Collar to suit 50mm pipes	50mm dia. pipe	8	Up to 4 Hours
QUELCAST110	QuelCast110 Cast In Fire Collar to suit 110mm pipes	110mm dia. pipe	8	Up to 4 Hours
QUELCAST160	QuelCast160 Cast In Fire Collar to suit 160mm pipes	160mm dia. pipe	4	Up to 4 Hours
QUELCAST-MANIFOLD	QuelCast Manifold Recess Former	QUELCAST110	4	n/a

Technical Support & Guidance:

Should you require any further information regarding this product, please do not hesitate to contact the technical department at Quelfire Ltd.

Tel: **0161 928 7308**. Email: technical@quelfire.co.uk

Please be aware that this document is intended for general information only and all details should be checked against all relevant supporting test evidence, certification and installation guidelines. Use of alternative components or deviations from the instructions in any way is likely to mean that the installation will not comply with the assessed rating.

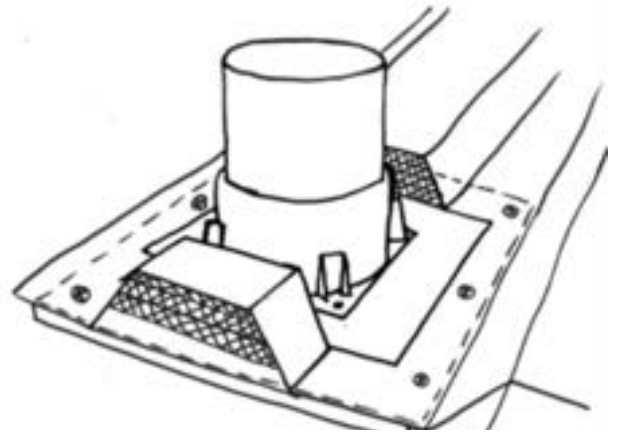
Quelfire Ltd does not accept responsibility for the consequences of using Quelfire products in applications or for purposes not authorised by Quelfire Ltd. Expert advice should be sought where such applications are contemplated.

The policy of Quelfire Ltd is one of constant improvement. Installers should therefore ensure they are working from the latest published drawings and instructions. Whilst Quelfire will endeavour to keep its publications up to date, the accuracy of the information contained within this drawing may be affected by pertinent changes in the law or regulatory requirements and alterations or amendments to the specification of Quelfire products.

All information contained in this document is given in good faith and is provided for guidance only. Any drawings provided are for illustrative purposes only. As Quelfire Ltd has no control over the methods or competence of installation and of prevailing site conditions, no warranties, expressed or implied, is intended to be given as to the actual performance of the product mentioned or referred to herein and no liability whatsoever will be accepted for any loss, damage or injury arising from the use of the information given.

Installation of the QuelCast Cast In Fire Collar to profiled Metal Deck

The below details are intended as an installation guide for the installation of QuelCast In Fire Collars to profiled metal decks. Whilst the profiles may vary in shape and size, the principle remains the same. Ultimately the responsibility for design and methodology lies with the contractor, this is an indicative guide only.

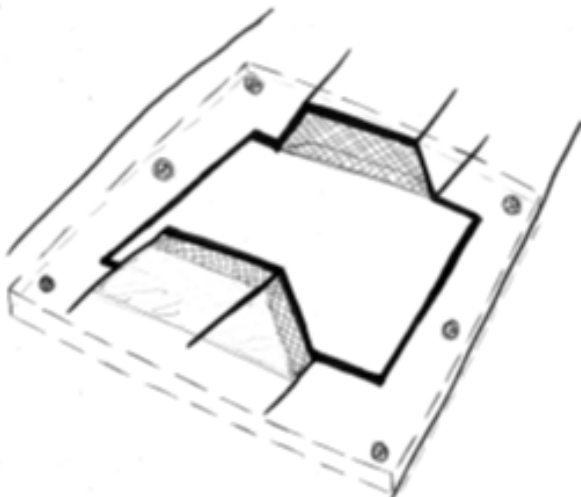


1. Accurately mark centre point location of QuelCast

2. Cut square hole out of deck allowing for a minimum cover of 75mm around QuelCast (QuelCast110 = minimum 310x310mm, QuelCast160 = 375x375mm).

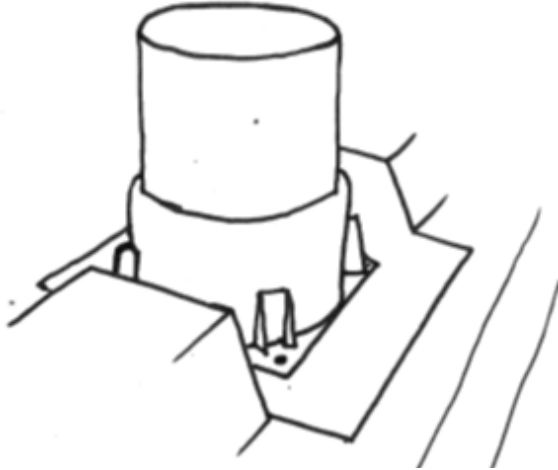


3. Fix plywood shutter to underside of metal deck.

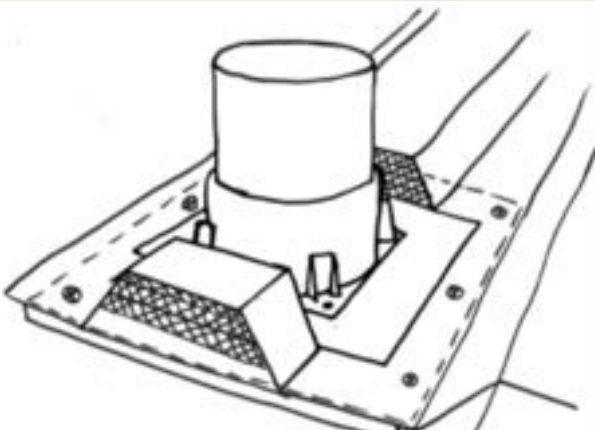


Installation of the QuelCast Cast In Fire Collar to profiled Metal Deck

4. Accurately locate QuelCast on plywood shutter and fix in position through corner fixing points..



5. Infill ends of profile as shutter for concrete (contractor choice of material – foam/mineral wool etc) Trim if necessary ensuring minimum cover of 75mm around base of QuelCast.



6. Position reinforcing bar and pour concrete as required.

7. Once cured, remove shutter from underside, remove cap and fit pipe.



Should you require any further information regarding the installation of this product, please visit our website or contact one of our specialists.

DECLARATION OF PERFORMANCE

According to Annex III of Regulation (EU) Nr. 305/2011 (Construction Products Regulation)

QUELFIRE QUELCAST CAST IN FIRE COLLARS

1. **Unique identification code of the product-type:**
Quelfire QuelCast Cast In Fire Collars
2. **Type, batch or serial number as required pursuant to Article 11(4):**
See batch number displayed on the product
3. **Intended use or uses of the construction product, in accordance with the applicable harmonised technical specification:**
Fire stopping and sealing Product for Penetration Seals, see ETA 20/1203

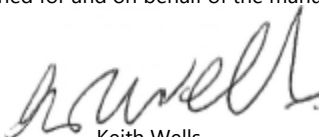
Pipe penetrations	Plastic pipes	The field of application has to comply with the content of the related ETA 20/1203
-------------------	---------------	---

4. **Name, registered trade name or registered trademark and contact address as required pursuant to Article 11(5):** Quelfire Ltd, Unit 3, Millbuck Way, Springvale Industrial Estate, Sandbach, CW11 3HT, Tel: 0161 928 7308, Email: sales@quelfire.co.uk
5. **Authorised representative:** n.a.
6. **System or systems of assessment and verification of constancy of performance of the construction product as set out in Annex V:** System 1
7. **Harmonised standard:** n.a.
8. **In the case of the declaration of performance concerning product covered by a Harmonised Standard and/or ETA:** Warrington Certification Ltd issued ETA Number 20/1203 on the basis of Guideline for European Technical Approval of Fire Stopping and Fire Sealing Products: EAD 350454-00-1104 Issue September 2017 performed initial and continuous surveillance of the place of manufacture and the factory production control implemented, sampled product and witnessed initial type testing under system 1 and issued the Certificate of Constancy of Performance 2812-CPR-JA5115
9. **Declared performance:**

Essential Characteristic	Declared performance/Harmonised technical specification
Reaction to fire	Class F according to EN 13501-1, see ETA 20/1203
Resistance to fire	Resistance to fire performance and field application in accordance with EN 13501-2 see ETA 20/1203
Dangerous substances	See ETA 20/1203 – Declaration – compliant
Durability and serviceability	Type: X intended for use in conditions exposed to weathering in accordance with EAD 350454-00-1104 Issue September 2017, EOTA Technical Report – TR024, See ETA 20/1203
Other	Not applicable/No performance determined

10. **The performance of the product identified in points 1 and 2 is in conformity with the declared performance in point 6. This declaration of performance is issued under the sole responsibility of the manufacturer identified in point 4.**

Signed for and on behalf of the manufacturer.



Keith Wells
Managing Director
Quelfire Ltd



Darryl Wells
Product Development
Quelfire Ltd

DECLARATION OF PERFORMANCE

According to Annex III of Regulation (EU) Nr. 305/2011 (Construction Products Regulation)

QUELFIRE QUELCOIL INTUWRAP

1. **Unique identification code of the product-type:**
Quelfire QuelCoil Intuwrap
2. **Type, batch or serial number as required pursuant to Article 11(4):**
See batch number displayed on the product
3. **Intended use or uses of the construction product, in accordance with the applicable harmonised technical specification:**
Fire stopping and sealing Product for Penetration Seals, see ETA 20/1202


Pipe penetrations	Plastic pipes	The field of application has to comply with the content of the related ETA 20/1202
-------------------	---------------	---

4. **Name, registered trade name or registered trademark and contact address as required pursuant to Article 11(5):** Quelfire Ltd, Unit 3, Millbuck Way, Springvale Industrial Estate, Sandbach, CW11 3HT, Tel: 0161 928 7308, Email: sales@quelfire.co.uk
5. **Authorised representative:** n.a.
6. **System or systems of assessment and verification of constancy of performance of the construction product as set out in Annex V:** System 1
7. **Harmonised standard:** n.a.
8. **In the case of the declaration of performance concerning product covered by a Harmonised Standard and/or ETA:** Warrington Certification Ltd issued ETA Number 20/1202 on the basis of Guideline for European Technical Approval of Fire Stopping and Fire Sealing Products: EAD 350454-00-1104 Issue September 2017 performed initial and continuous surveillance of the place of manufacture and the factory production control implemented, sampled product and witnessed initial type testing under system 1 and issued the Certificate of Constancy of Performance 2812-CPR-JA5119
9. **Declared performance:**

Essential Characteristic	Declared performance/Harmonised technical specification
Reaction to fire	Class F according to EN 13501-1, see ETA 20/1202
Resistance to fire	Resistance to fire performance and field application in accordance with EN 13501-2 see ETA 20/1202
Dangerous substances	See ETA 20/1202 – Declaration – compliant
Durability and serviceability	Type: X intended for use in conditions exposed to weathering in accordance with EAD 350454-00-1104 Issue September 2017 2, EOTA Technical Report – TR024, see ETA 20/1202
Other	Not applicable/No performance determined

10. **The performance of the product identified in points 1 and 2 is in conformity with the declared performance in point 6. This declaration of performance is issued under the sole responsibility of the manufacturer identified in point 4.**

Signed for and on behalf of the manufacturer.



Keith Wells
Managing Director
Quelfire Ltd



Darryl Wells
Product Development
Quelfire Ltd

Notified body No. 2812

Certificate of Constancy of Performance

2812-CPR-JA5119

In compliance with *Regulation 305/2011/EU of the European Parliament and of the Council of 9 March 2011* (the Construction Products Regulation or CPR), this certificate applies to the construction product

QuelCoil Wrap

Intended use: Penetration Seals

Essential characteristics	Performance according to	Technical specification
Reaction to fire	ETA 20/1202	EAD 350454-00-1104
Resistance to fire		
Dangerous substances		

Certificate of Constancy of Performance

2812-CPR-JA5119

Placed on the Market under the Name of

**QUELFIRE LTD
Unit 3 Millbuck Way
Springvale Industrial Estate
Sandbach
Cheshire
CW11 3HT**

and produced in the manufacturing plant

E/230

This is coded format and the information is held by the Notified Body

This certificate attests that all provisions concerning the Assessment and Verification of Constancy of Performance described in:

ETA 20/1202 issued 17/12/2020

And

EAD 350454-00-1104

Under System 1 for the performance set out in the ETA are applied and that the Factory Production Control conducted by the manufacturer is assessed to ensure the Constancy of Performance of the Construction Product.

This certificate was first issued on 23/11/2020 and revised on 20/07/2021 and will remain valid as long as neither the ETA, the EAD, the Construction Product, the AVCP methods nor the manufacturing conditions in the plant are modified significantly, or unless suspended or withdrawn by the Notified Product Certification Body.

Valid to: **20/02/2022**

ERO Project Reference: **ERO 034621 P1113**



Paul Duggan
Certification Manager

CSF406-NL 6.0

QUELCOIL CE MARKED INTUWRAP INSTALLATION INSTRUCTIONS

This installation guide is intended for general information only and all details should be checked against relevant supporting test evidence and certification.



QuelCoil Intuwrap is a lifesaving product designed to prevent the spread of fire where combustible pipes or insulation penetrate fire compartment walls and floors. It is therefore essential that it is fitted in a responsible and workmanlike manner.

The QuelCoil Intuwrap is a very universal product that is supplied as a 25 metre long roll of 50mm x 2mm wrap that is cut to length on site to suit the specific pipe diameter and material and can be used around combustible insulations around non-combustible pipes such as copper or steel and can also be used directly to combustible plastic pipes.

QuelCoil Intuwrap can be installed directly into both solid masonry walls and fire rated plasterboard partition walls (where the specification of the wall and insulation is appropriate) and there must be no gap around the outside of the QuelCoil Intuwrap once installed so it is important to drill holes for services accurately taking into consideration the number of layers of QuelCoil required.

For oversized holes in walls it will be necessary to install the QuelCoil in conjunction with the QuelStop Fire Batt system and for oversized hole in floors it will be necessary to installation in conjunction with Quelfire QF2 Fire Protection Compound, so this document should be read in conjunction with all other available relevant information and tested scope of application available from the Quelfire Technical Team.

The number of layers of QuelCoil Intuwrap required is as follows:

Plastic Pipe Diameter	Number of QuelCoil Intuwrap layers required
≤ 50mm	1 layer 50mm x 2mm
51 - 75mm	2 layers 50mm x 2mm
76 - 110mm	3 layers 50mm x 2mm
111 - 160mm	6 layers 50mm x 2mm
Up to 50mm thick insulation with up to 159mm diameter metallic pipes	2 layers 50mm x 2mm

Please bear in mind that a double seal may be required, for instance one in each side of the wall – refer to the specific installation details before commencing work.

Installation principles of the QuelCoil Intuwrap

Ensure the services are free from dust and debris.

Determine the correct number of layers of QuelCoil Intuwrap that is required by measuring the outside diameter of the services and checking all data.

Wrap the QuelCoil tightly around the services until the correct number of layers has been achieved and cut with a sharp knife.

Using the self-adhesive tape supplied in the box with the wrap, secure the QuelCoil Intuwrap around the services.

Slide the QuelCoil Intuwrap into final position ensuring that it is fitted flush with the underside of the concrete slab or fire seal and/or flush with the face of the wall or QuelStop Fire Batt.

The QuelCoil Intuwrap can be installed in a number of different scenarios and the following pages set out the following installation methods:

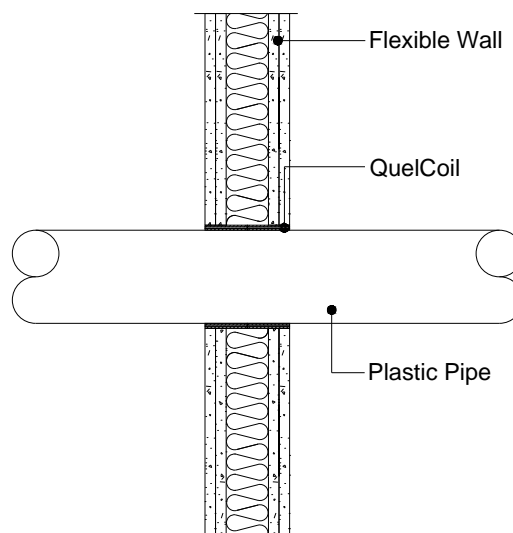
- 🔧 Installation of the QuelCoil Intuwrap within a correctly drilled hole in a wall.
- 🔧 Installation of the QuelCoil Intuwrap with QF2 Fire Protection Compound seal - oversized floor hole.
- 🔧 Installation of the QuelCoil Intuwrap in conjunction with QuelStop Fire Batt seal - oversized wall hole.

Installation of the QuelCoil Intuwrap within a correctly drilled hole in a wall

Quelfire Products used:




- 🔧 QuelCoil Intuwrap

- 1.** Check the sides of the pipe and hole are relatively clean and dust free.
- 2.** Wrap the correct number of layers of QuelCoil Intuwrap around the pipe, cut to length and secure with the self-adhesive tape supplied.
- 3.** Slide the QuelCoil Intuwrap along the pipe into the correct position so the edge of the QuelCoil Intuwrap is flush with the outer face of the wall.
- 4.** Repeat steps 1-3 in the other side of the wall.



Installation of the QuelCoil Intuwrap with QF2 Fire Protection Compound seal - oversized floor hole

Quelfire Products used:

-  QuelCoil Intuwrap
-  MW Shuttering Slab
-  QF2 Fire Protection Compound

- 1.** Check the sides of the pipe and hole are relatively clean and dust free.
- 2.** Wrap the correct number of layers of QuelCoil Intuwrap around the pipe, cut to length and secure with the self-adhesive tape supplied.
- 3.** Some details may require an additional wrap on top of the first one, check the installation details.
- 4.** Cut slightly oversized and friction fit the Quelfire MW Shuttering Slab into the opening around the services within the aperture ensuring a tight fit and that the correct minimum depth of the QF2 Fire Protection Compound (usually 100mm) can be achieved. Consider temporary support if required.
- 5.** Slide the QuelCoil Intuwrap down the pipe into the correct position so the bottom edge of the Intuwrap is sitting flush on the shuttering.

A common misunderstanding is that the wrap protrudes from the underside of the slab/fire protection compound but this is **not** a Quelfire tested detail and cannot be rectified if installed in this way. The Intuwrap must be flush with the underside of the compound seal.

- 6.** Mix the QF2 Fire Protection Compound with clean water in a plastic container or bucket by slowly adding the dry powder to the water whilst stirring by hand or power mixer to ensure a smooth lump-free mix. Refer to the recommend mix table in the QF2 documentation for the recommended dry powder to water ratio.
- 7.** Pour the QF2 Fire Protection Compound into the opening around the services to the required thickness – minimum 100mm.

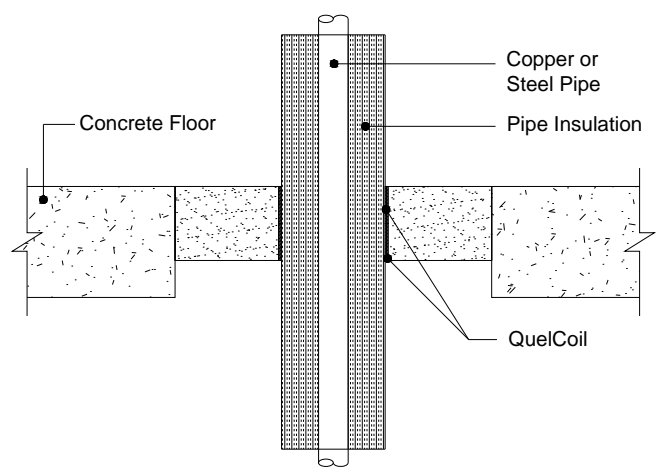
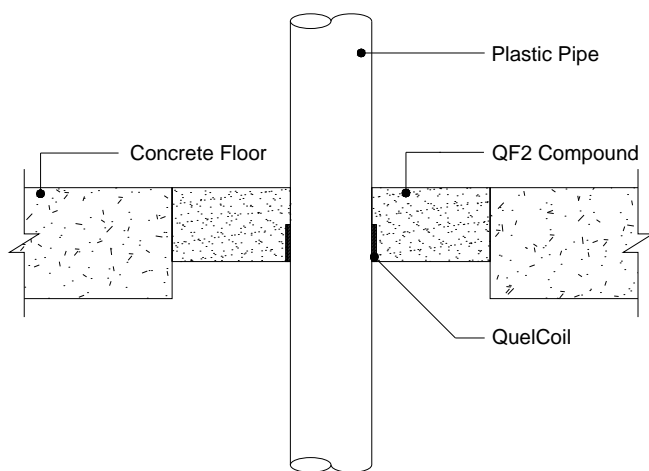


- 8.** Use a trowel to ensure the aperture is full and remove any excess QF2 Fire Protection Compound from around the opening.
- 9.** Use a trowel to level the surface of the QF2 Fire Protection Compound and ensure a neat finish.






QUELCOIL CE MARKED INTUWRAP INSTALLATION INSTRUCTIONS

- 11.** Any spillages should be wiped up with a damp cloth before setting occurs.
- 12.** Allow 28 days for the QF2 Fire Protection Compound to fully 'cure'
- 13.** The MW Shuttering Slab can then be removed or alternatively may remain in place but we recommend cutting back the shutter so that the QuelCoil is visible from the underside and exposed to fire. Any combustible shuttering such as plywood must be removed.

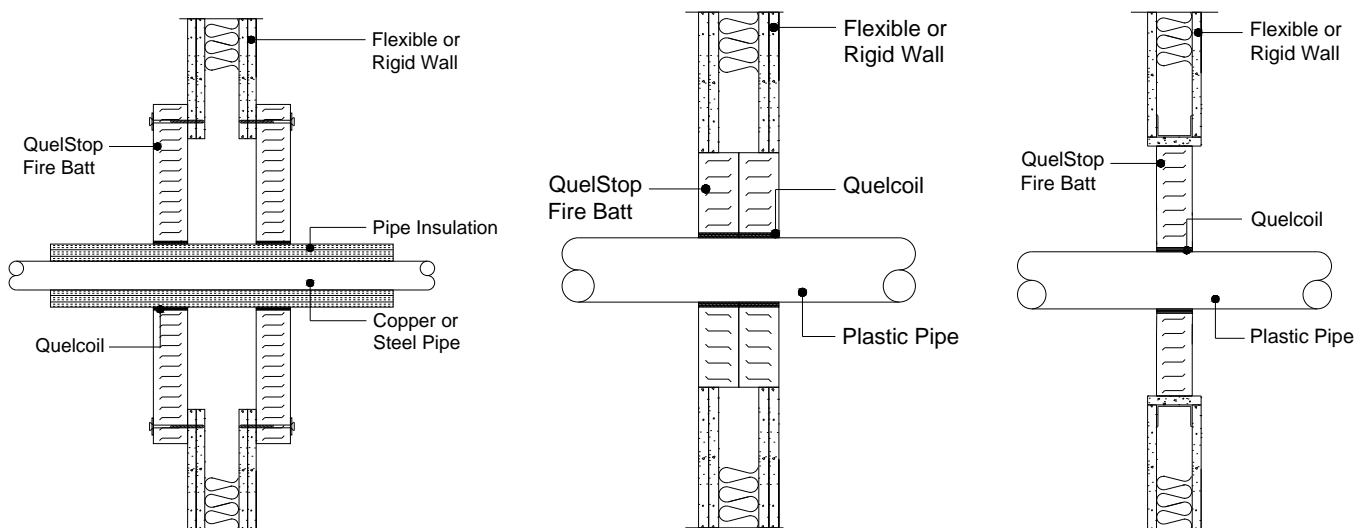


Installation of the QuelCoil Intuwrap in conjunction with QuelStop Fire Batt seal - oversized wall hole

Quelfire Products used:

-  QuelCoil Intuwrap
-  QuelStop Fire Batt
-  QuelStop Intumescent Acrylic Sealant

Please bear in mind that a double seal may be required, for instance one in each side of the wall – refer to the specific installation details before commencing work.



1. Check the sides of the pipe or insulation are relatively clean and dust free.
2. Wrap the correct number of layers of QuelCoil Intuwrap around the pipe/insulation, cut to length and secure with the self-adhesive tape supplied.
3. Make sure that the surfaces of the wall/letterbox that the QuelStop Batt is being installed to are clean and dust free.
4. Apply QuelStop Intumescent Acrylic Sealant to the QuelCoil and butter up with a spatula.
5. Ensure that the QuelCoil Intuwrap is in the correct location and adjust as necessary by sliding along the pipe/insulation so that when the Batt is installed the face of the QuelCoil is flush with the Batt.
6. Install the QuelStop Fire Batt and QuelStop Intumescent Acrylic Sealant around the QuelCoil in accordance with all other supporting documentation.
7. Apply QuelStop Intumescent Acoustic Acrylic Sealant or QuelStop Ablative Coating to any damaged coating on the QuelStop Fire Batt.

Please note that the QuelCoil Intuwrap should be flush with the face of the QuelStop Batt and should be visible for inspection but not protruding. A smear of sealant on the face of the QuelCoil is probably inevitable during installation and does not affect performance, but a bead of sealant over the face is not required.

8. Where a double batt or pattress batt seal is required, repeat steps 1-7 on the other side of the wall.

QUELCOIL CE MARKED INTUWRAP INSTALLATION INSTRUCTIONS

Packaging & Storage:

QuelCoil Intuwrap is supplied packaged in a cardboard box and should be stored in a cool, dry location.

Health & Safety:

QuelCoil Intuwrap consists of a roll of self-adhesive tape and a roll of intumescent wrap shell containing graphite in a synthetic compound with the addition of filters and process oils.

For further information, please refer to the Material Safety Data Sheets, available on request or via the website.

Technical Support & Guidance:

Should you require any further information regarding this product, please do not hesitate to contact the technical department at Quelfire Ltd.

Tel: **0161 928 7308**. Email: technical@quelfire.co.uk

Please be aware that this document is intended for general information only and all details should be checked against all relevant supporting test evidence, certification and installation guidelines. Use of alternative components or deviations from the instructions in any way is likely to mean that the installation will not comply with the assessed rating.

Quelfire Ltd does not accept responsibility for the consequences of using Quelfire products in applications or for purposes not authorised by Quelfire Ltd. Expert advice should be sought where such applications are contemplated.

The policy of Quelfire Ltd is one of constant improvement. Installers should therefore ensure they are working from the latest published drawings and instructions. Whilst Quelfire will endeavour to keep its publications up to date, the accuracy of the information contained within this drawing may be affected by pertinent changes in the law or regulatory requirements and alterations or amendments to the specification of Quelfire products.

All information contained in this document is given in good faith and is provided for guidance only. Any drawings provided are for illustrative purposes only. As Quelfire Ltd has no control over the methods or competence of installation and of prevailing site conditions, no warranties, expressed or implied, is intended to be given as to the actual performance of the product mentioned or referred to herein and no liability whatsoever will be accepted for any loss, damage or injury arising from the use of the information given.

MATERIAL SAFETY DATA SHEET

Product name	Quelfire CE Marked QuelCoil Continuous Intuwrap
Product Code(s)	QUELCOIL
Revision Date	01/01/2021
Revision number	02

Section 1: Identification of the substance/mixture and of the company / undertaking

1.1. Product identifier

Product name	Quelfire CE Marked QuelCoil Continuous Intuwrap
Product Code	QUELCOIL

1.2. Relevant identified uses of the substance or mixture and uses advised against

Not applicable

1.3. Details of the supplier of the safety data sheet

Company Name	Quelfire Limited Springvale Industrial Estate Millbuck Way Sandbach CW11 3HT
Tel	0161 928 7308
Fax	0161 924 1340
Email	technical@quelfire.co.uk

1.4. Emergency telephone number

Emergency telephone number	0161 928 7308 (Office hours only)
----------------------------	-----------------------------------

Section 2: Hazards Identification

2.1. Classification of the substance or mixture

Classification under CLP	Not Classified
--------------------------	----------------

2.2. Label elements

This product has no label elements

2.3. Other hazards

This product is not identified as a PBT/ vPvB substance

Section 3: Composition/information on ingredients

3.1. Substances

Thermoplastic sheet composition containing intercalated graphite in a synthetic compound with the addition of filters and process oils.

3.2. Mixtures

No data available

Section 4: First aid measures

☎ 0161 928 7308	✉ sales@quelfire.co.uk	🌐 www.quelfire.co.uk
-----------------	--	--

MATERIAL SAFETY DATA SHEET

4.1. Description of first aid measures

Skin contact	It is possible that handling of the composite interior could cause skin irritation, in which case first rinse with water and remove fragments of the composite material, then wash with plenty of soap and water. Do not use organic solvents.
Eye contact	Rinse with water and seek medical attention.
Ingestion	If ingested do not induce vomiting, seek medical attention
Inhalation	Consult a doctor

4.2. Most important symptoms and effects, both acute and delayed

Skin contact	There may be mild irritation at the site of contact
Eye contact	There may be irritation and redness
Ingestion	There may be irritation of the throat
Inhalation	There may be irritation of the throat with a feeling of tightness in the chest.

4.3. Indication of any immediate medical attention and special treatment needed

Immediate/special treatment	Not applicable
-----------------------------	----------------

Section 5: Fire-Fighting measures

5.1. Extinguishing media

Suitable Extinguishing Media	Water, CO2, Foam and/ or dry powder
------------------------------	-------------------------------------

5.2. Special hazards arising from the substance or mixture

Exposure hazards	In combustion emits toxic fumes
------------------	---------------------------------

5.3. Advice for fire-fighters

Advice for fire-fighters	Wear self-contained breathing apparatus. Wear suitable proactive clothing to prevent contact with skin and eyes
--------------------------	---

Section 6: Accidental release measures

6.1. Personal precautions, protective equipment and emergency procedures

Refer to section 8 'Exposure controls/ personal protection'.
--

6.2. Environmental precautions

Environmental	Do not discharge into drains or rivers.
---------------	---

6.3. Methods and materials for containment and cleaning up

Clean-up procedures	Wash the spillage site with large amounts of water.
---------------------	---

6.4. Reference to other sections

Refer to section 8 'Exposure controls/ personal protection'

Section 7: Handling and storage

7.1. Precautions for safe handling

MATERIAL SAFETY DATA SHEET

Handling requirements	Avoid the formation or spread of dust in the air Avoid handling interior composite material
-----------------------	--

7.2. Conditions for safe storage, including any incompatibilities

Storage conditions	Store in cool, well ventilated area.
--------------------	--------------------------------------

7.3. Specific end use(s)

Specific end use(s)	No data available
---------------------	-------------------

Section 8: Exposure controls/personal protection

8.1. Control parameters

No data available

8.2. Exposure controls

Respiratory protection	Not normally required. However secondary operations, such as drilling may generate dust so in these operations a suitable Respiratory protective device with particle filter should be worn
Hand protection	Protective gloves
Eye protection	Safety glasses. Ensure eye bath is to hand.
Skin protection	Protective clothing

Personal protective equipment symbol(s):



Section 9: Physical and chemical properties

9.1. Information on basic physical and chemical properties

State	Solid
Odour	Odourless

9.2. Other information

Solubility – insoluble in water and generally chemical inert
--

Section 10: Stability and reactivity

10.1. Reactivity

Stable under recommended transport or storage conditions
--

10.2. Chemical stability

Stable under normal conditions

10.3. Possibility of hazardous reactions

Hazardous reactions will not occur under normal transport or storage conditions. Decomposition may occur on exposure to conditions or materials listed below.

10.4. Conditions to avoid

☎ 0161 928 7308	✉ sales@quelfire.co.uk	🌐 www.quelfire.co.uk
-----------------	------------------------	----------------------

MATERIAL SAFETY DATA SHEET

Heat

10.5. Incompatible materials

Strong oxidising agents. Strong acids

10.6. Hazardous decomposition products

In combustion emits toxic fumes

Section 11: Toxicological information

11.1. Information on toxicological effects

Non-toxic in solid state

Section 12: Ecological information

12.1. Toxicity

No data available

12.2. Persistence and degradability

Biodergradable

12.3. Bioaccumulative potential

Not potentially Bioaccumulative

12.4. Mobility in soil

No data available

12.5 Results of PBT and vPvB assessment

This product is not identified as a PBT/ vPvB substance

12.6. Other adverse effects

Negligible ecotoxicity

Section 13: Disposal considerations

13.1. Waste treatment methods

Regional legislation (waste)	Disposal must be done according to official regulations.
Waste treatment methods	Dispose of contents/ container in accordance with licensed collector's sorting instructions

Section 14: Transport information

This product does not require a classification for transport

14.6. Special Precautions for user

Overland Transport	Not Applicable
Transport by sea	Not Applicable
Air transport	Not Applicable
Inland waterway transport	Not Applicable
Rail transport	Not Applicable

Section 15: Regulatory information

15.1. Safety, health and environmental regulations/legislation specific for the substance or mixture

☎ 0161 928 7308	✉ sales@quelfire.co.uk	🌐 www.quelfire.co.uk
-----------------	------------------------	----------------------

MATERIAL SAFETY DATA SHEET

No additional information available

15.2. Chemical Safety Assessment

Chemical Safety Assessment	No chemical safety assessment has been carried out
----------------------------	--

Section 16: Other information

Other information	This safety data sheet is prepared in accordance with Commission Regulation (EU) No 453/2010. *indicates text in the SDS which has changed since last revision.
Legal disclaimer	The above information is believed to be correct but does not purport to be all inclusive and shall be used only as a guide. This company shall not be held liable for any damage resulting from handling or from contact with the above product.

QuelCoil CE Marked Continuous Intuwrap is a universal intumescent pipe wrap used to maintain the fire rating of walls where they have been penetrated by plastic pipes and/or metallic pipes with combustibile insulation. It can be cut to length on site.



QuelCoil CE Marked Continuous Intuwrap



QuelCoil CE Marked Continuous Intuwrap used in conjunction with QuelStop Fire Batt

FEATURES & BENEFITS

- Up to 2 hour fire rating (EI120)
- Supplied in a 25m coil and cut to length on site
- No mechanical fixings required
- Suitable for use in flexible walls and rigid walls
- Suitable for use in QuelStop Fire Batt System
- Suitable for use with QF2 Fire Protection Compound in concrete floors
- Suitable for PVC, HDPE and PP Pipes
- Suitable for plastic pipes up to 160mm diameter
- Suitable for use around metal pipes with insulation
- Suitable for use around pipe insulation up to 50mm thick
- Performance unaffected by weathering (Type X Durability)
- CE Marked

COMPOSITION

QuelCoil Intuwrap is supplied as a 25 metre long roll of 50x2mm intumescent. Included in the individual box is a roll of self-adhesive fibre reinforced tape which is used to secure the wrap around the services.

STANDARDS & APPROVALS

- Tested to BS EN 1366-3:2009
- CE Marked
- Type X Durability Testing
- Classified According to EN 13501-2: 2007 + A1: 2009



The Warringtonfire Logo displayed is the trademark of Warringtonfire registered in the United Kingdom. The Warringtonfire Logo is evidence that the products denoted as 'Tested by Warringtonfire' were tested to BSEN 1366-3: 2009 in England between September 22nd 2015 and January 7th 2021



This product is CE Marked.

SIZES

- 25 metre coil 2mm x 50mm

APPLICATION

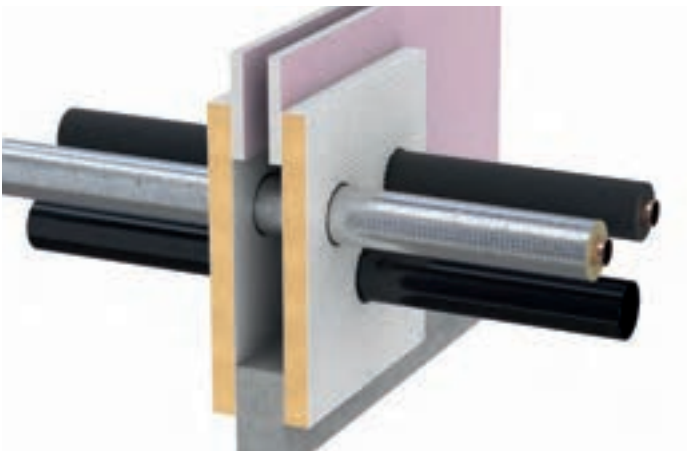
The QuelCoil Intuwrap is a very universal product that is cut to length on site to suit the specific pipe diameter and material. It can be used around insulated non-combustible pipes, in which case 2 layers of QuelCoil are required around the insulation. QuelCoil can also be used directly around combustible plastic pipes, in which case the number of layers ranges between 1 and 6 layers and depends on the outside diameter of the plastic pipe.

QuelCoil Intuwrap can be installed directly into both solid masonry walls, fire rated plasterboard partition walls (where the specification of the wall and insulation is appropriate), QuelStop Fire Batt and QF2 Fire Protection Compound. The QuelCoil is simply wrapped around the services to achieve the correct number of layers, it can be cut to length with a sharp knife and then sealed with a self-adhesive fibre reinforced tape.

There must be no gap around the outside of the QuelCoil Intuwrap once installed so it is important to drill holes for services accurately taking into consideration the number of layers of QuelCoil required. For oversized holes in walls it will be necessary to install the QuelCoil in conjunction with the QuelStop Fire Batt system. Where holes in floors are incorrectly drilled oversized or larger square holes are left or formed then the hole will need shuttering and the whole penetration backfilling with QF2 Fire Protection Compound.

There must be no gap around the QuelCoil Intuwrap and the Intuwrap must be fitted flush with the underside of the concrete slab or fire seal and/or flush with the face of the wall or QuelStop Fire Batt.

Full installation details and step by step instructions are available to show the options.



Cross section of QuelCoil Continuous Intuwrap used around insulated copper pipes and plastic pipe in QuelStop Fire Batt



Cross section of QuelCoil Continuous Intuwrap installed directly into wall

PERFORMANCE

Plastic Pipe Diameter	Number of QuelCoil Intuwrap layers required
≤ 50mm	1 layer 50mm x 2mm
51 - 75mm	2 layers 50mm x 2mm
76 - 110mm	3 layers 50mm x 2mm
111 - 160mm	6 layers 50mm x 2mm
Up to 50mm thick insulation with up to 159mm diameter metallic pipes	2 layers 50mm x 2mm

Technical Support & Guidance:

Should you require any further information regarding this product, please do not hesitate to contact the technical department at Quelfire Ltd.

Tel: **0161 928 7308**. Email: technical@quelfire.co.uk

Please be aware that this document is intended for general information only and all details should be checked against all relevant supporting test evidence, certification and installation guidelines.

Use of alternative components or deviations from the instructions in any way is likely to mean that the installation will not comply with the assessed rating.

Quelfire Ltd does not accept responsibility for the consequences of using Quelfire products in applications or for purposes not authorised by Quelfire Ltd. Expert advice should be sought where such applications are contemplated.

The policy of Quelfire Ltd is one of constant improvement. Details are subject to change and/or withdrawal without notification therefore you must ensure this is the latest published documentation. Whilst Quelfire will endeavour to keep its publications up to date, the accuracy of the information contained within this document may be affected by pertinent changes in the law or regulatory requirements and alterations or amendments to the specification of Quelfire products.

All information contained in this document is given in good faith and is provided for guidance only. Any drawings provided are for illustrative purposes only. As Quelfire Ltd has no control over the methods or competence of installation and of prevailing site conditions, no warranties, expressed or implied, is intended to be given as to the actual performance of the product mentioned or referred to herein and no liability whatsoever will be accepted for any loss, damage or injury arising from the use of the information given. Full terms and conditions can be accessed at: <https://quelfire.co.uk/terms-conditions-of-sale/>

DECLARATION OF PERFORMANCE

According to Annex III of Regulation (EU) Nr. 305/2011 (Construction Products Regulation)

QUELFIRE QWR FIRE COLLARS

1. **Unique identification code of the product-type:**
Quelfire QWR Fire Collars
2. **Type, batch or serial number as required pursuant to Article 11(4):**
See batch number displayed on the product
3. **Intended use or uses of the construction product, in accordance with the applicable harmonised technical specification:**
Fire stopping and sealing Product for Penetration Seals, see ETA 20/1204

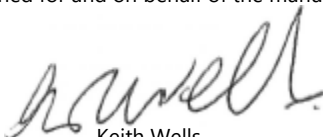
Pipe penetrations	Plastic pipes	The field of application has to comply with the content of the related ETA 20/1204
-------------------	---------------	---

4. **Name, registered trade name or registered trademark and contact address as required pursuant to Article 11(5):** Quelfire Ltd, Unit 3, Millbuck Way, Springvale Industrial Estate, Sandbach, CW11 3HT, Tel: 0161 928 7308, Email: sales@quelfire.co.uk
5. **Authorised representative:** n.a.
6. **System or systems of assessment and verification of constancy of performance of the construction product as set out in Annex V:** System 1
7. **Harmonised standard:** n.a.
8. **In the case of the declaration of performance concerning product covered by a Harmonised Standard and/or ETA:** Warrington Certification Ltd issued ETA Number 20/1204 on the basis of Guideline for European Technical Approval of Fire Stopping and Fire Sealing Products: EAD 350454-00-1104 Issue September 2017 performed initial and continuous surveillance of the place of manufacture and the factory production control implemented, sampled product and witnessed initial type testing under system 1 and issued the Certificate of Constancy of Performance 2812-CPR-JA5103
9. **Declared performance:**

Essential Characteristic	Declared performance/Harmonised technical specification
Reaction to fire	Class F according to EN 13501-1, see ETA 20/1204
Resistance to fire	Resistance to fire performance and field application in accordance with EN 13501-2 see ETA 20/1204
Dangerous substances	See ETA 20/1204 – Declaration – compliant
Durability and serviceability	Type: X intended for use in conditions exposed to weathering in accordance with EAD 350454-00-1104 Issue September 2017, EOTA Technical Report – TR024
Other	Not applicable/No performance determined

10. **The performance of the product identified in points 1 and 2 is in conformity with the declared performance in point 6. This declaration of performance is issued under the sole responsibility of the manufacturer identified in point 4.**

Signed for and on behalf of the manufacturer.



Keith Wells
Managing Director
Quelfire Ltd



Darryl Wells
Product Development
Quelfire Ltd

Notified Body No. 2812

Certificate of Constancy of Performance

2812-CPR-JA5103

In compliance with *Regulation 305/2011/EU of the European Parliament and of the Council of 9 March 2011* (the Construction Products Regulation or CPR), this certificate applies to the construction product:

QWR Collars

Intended use: Penetration Seals

Essential characteristics	Performance according to	Technical specification
Reaction to fire	ETA 20/1204	EAD 350454-00-1104 Issue: September 2017 Fire Stopping and Fire Sealing Products: Penetration Seals
Resistance to fire		
Dangerous substances		

Certificate of Constancy of Performance

2812-CPR-JA5103

Placed on the Market under the Name of

**QUELFIRE LTD
Unit 3 Millbuck Way
Springvale Industrial Estate
Sandbach
Cheshire
CW11 3HT**

and produced in the manufacturing plant

E/230

This is coded format and the information is held by the Notified Body

This certificate attests that all provisions concerning the Assessment and Verification of Constancy of Performance described in:

ETA 20/1204 issued on 17/12/2020

And

EAD 350454-00-1104

Under System 1 for the performance set out in the ETA are applied and that the Factory Production Control conducted by the manufacturer is assessed to ensure the Constancy of Performance of the Construction Product.

This certificate was first issued on 23/11/2020 and revised on 20/07/2021 and will remain valid as long as neither the ETA, the EAD, the Construction Product, the AVCP methods nor the manufacturing conditions in the plant are modified significantly, or unless suspended or withdrawn by the Notified Product Certification Body.

Valid to: **27/08/2023**

ERO Project Reference: **ERO 034621 P1111**



Paul Duggan
Certification Manager

CSF406-NL 6.0

MATERIAL SAFETY DATA SHEET

Product name	Quelfire CE Marked QWR fire Collar
Product Code(s)	QWR25/CE, QWR32/CE, QWR40/CE, QWR50/CE, QWR55/CE, QWR63/CE, QWR75/CE, QWR82/CE, QWR90/CE, QWR110/CE, QWR125/CE, QWR160/CE, QWR55/CE/2, QWR/110/CE/2, QWR125/CE/2
Revision Date	01/01/2021
Revision number	02

Section 1: Identification of the substance/mixture and of the company / undertaking

1.1. Product identifier

Product name	Quelfire CE Marked QWR fire Collar
Product Code	QWR25/CE, QWR32/CE, QWR40/CE, QWR50/CE, QWR55/CE, QWR63/CE, QWR75/CE, QWR82/CE, QWR90/CE, QWR110/CE, QWR125/CE, QWR160/CE, QWR55/CE/2, QWR/110/CE/2, QWR125/CE/2

1.2. Relevant identified uses of the substance or mixture and uses advised against

Not applicable

1.3. Details of the supplier of the safety data sheet

Company Name	Quelfire Limited Springvale Industrial Estate Millbuck Way Sandbach CW11 3HT
Tel	0161 928 7308
Fax	0161 924 1340
Email	technical@quelfire.co.uk

1.4. Emergency telephone number

Emergency telephone number 0161 928 7308 (Office hours only)

Section 2: Hazards Identification

2.1. Classification of the substance or mixture

Classification under CLP Not Classified

2.2. Label elements

This product has no label elements

2.3. Other hazards

This product is not identified as a PBT/ vPvB substance

Section 3: Composition/information on ingredients

3.1. Substances

Thermoplastic sheet composition containing intercalated graphite in a synthetic compound with the addition of filters and process oils. The intumescent element is contained within a metal shell.

3.2. Mixtures

MATERIAL SAFETY DATA SHEET

No data available

Section 4: First aid measures

4.1. Description of first aid measures

Skin contact	It is possible that handling of the composite interior could cause skin irritation, in which case first rinse with water and remove fragments of the composite material, then wash with plenty of soap and water. Do not use organic solvents.
Eye contact	Rinse with water and seek medical attention.
Ingestion	If ingested do not induce vomiting, seek medical attention
Inhalation	Consult a doctor

4.2. Most important symptoms and effects, both acute and delayed

Skin contact	There may be mild irritation at the site of contact
Eye contact	There may be irritation and redness
Ingestion	There may be irritation of the throat
Inhalation	There may be irritation of the throat with a feeling of tightness in the chest.

4.3. Indication of any immediate medical attention and special treatment needed

Immediate/special treatment	Not applicable
-----------------------------	----------------

Section 5: Fire-Fighting measures

5.1. Extinguishing media

Suitable Extinguishing Media	Water, CO2, Foam and/ or dry powder
------------------------------	-------------------------------------

5.2. Special hazards arising from the substance or mixture

Exposure hazards	In combustion emits toxic fumes
------------------	---------------------------------

5.3. Advice for fire-fighters

Advice for fire-fighters	Wear self-contained breathing apparatus. Wear suitable proactive clothing to prevent contact with skin and eyes
--------------------------	---

Section 6: Accidental release measures

6.1. Personal precautions, protective equipment and emergency procedures

Refer to section 8 'Exposure controls/ personal protection'.
--

6.2. Environmental precautions

Environmental	Do not discharge into drains or rivers.
---------------	---

6.3. Methods and materials for containment and cleaning up

Clean-up procedures	Wash the spillage site with large amounts of water.
---------------------	---

6.4. Reference to other sections

Refer to section 8 'Exposure controls/ personal protection'

Section 7: Handling and storage

7.1. Precautions for safe handling

MATERIAL SAFETY DATA SHEET

Handling requirements	Avoid the formation or spread of dust in the air Avoid handling interior composite material
-----------------------	--

7.2. Conditions for safe storage, including any incompatibilities

Storage conditions	Store in cool, well ventilated area.
--------------------	--------------------------------------

7.3. Specific end use(s)

Specific end use(s)	No data available
---------------------	-------------------

Section 8: Exposure controls/personal protection

8.1. Control parameters

No data available

8.2. Exposure controls

Respiratory protection	Not normally required. However secondary operations, such as drilling may generate dust so in these operations a suitable Respiratory protective device with particle filter should be worn
Hand protection	Protective gloves
Eye protection	Safety glasses. Ensure eye bath is to hand.
Skin protection	Protective clothing

Personal protective equipment symbol(s):



Section 9: Physical and chemical properties

9.1. Information on basic physical and chemical properties

State	Solid
Odour	Odourless

9.2. Other information

Solubility – insoluble in water and generally chemical inert
--

Section 10: Stability and reactivity

10.1. Reactivity

Stable under recommended transport or storage conditions
--

10.2. Chemical stability

Stable under normal conditions

10.3. Possibility of hazardous reactions

Hazardous reactions will not occur under normal transport or storage conditions. Decomposition may occur on exposure to conditions or materials listed below.

MATERIAL SAFETY DATA SHEET

10.4. Conditions to avoid

Heat

10.5. Incompatible materials

Strong oxidising agents. Strong acids

10.6. Hazardous decomposition products

In combustion emits toxic fumes

Section 11: Toxicological information

11.1. Information on toxicological effects

Non-toxic in solid state

Section 12: Ecological information

12.1. Toxicity

No data available

12.2. Persistence and degradability

Biodergradable

12.3. Bioaccumulative potential

Not potentially Bioaccumulative

12.4. Mobility in soil

No data available

12.5 Results of PBT and vPvB assessment

This product is not identified as a PBT/ vPvB substance

12.6. Other adverse effects

Negligible ecotoxicity

Section 13: Disposal considerations

13.1. Waste treatment methods

Regional legislation (waste)	Disposal must be done according to official regulations.
Waste treatment methods	Dispose of contents/ container in accordance with licensed collector's sorting instructions

Section 14: Transport information

This product does not require a classification for transport

14.6. Special Precautions for user

Overland Transport	Not Applicable
Transport by sea	Not Applicable
Air transport	Not Applicable
Inland waterway transport	Not Applicable
Rail transport	Not Applicable

Section 15: Regulatory information

☎ 0161 928 7308	✉ sales@quelfire.co.uk	🌐 www.quelfire.co.uk
-----------------	------------------------	----------------------

MATERIAL SAFETY DATA SHEET

15.1. Safety, health and environmental regulations/legislation specific for the substance or mixture

No additional information available

15.2. Chemical Safety Assessment

Chemical Safety Assessment	No chemical safety assessment has been carried out
----------------------------	--

Section 16: Other information

Other information	This safety data sheet is prepared in accordance with Commission Regulation (EU) No 453/2010. *indicates text in the SDS which has changed since last revision.
Legal disclaimer	The above information is believed to be correct but does not purport to be all inclusive and shall be used only as a guide. This company shall not be held liable for any damage resulting from handling or from contact with the above product.

This installation guide is intended for general information only and all details should be checked against relevant supporting test evidence and certification.



Quelfire QWR Fire Collars are lifesaving products designed to prevent the spread of fire where plastic pipes penetrate fire compartment floors. It is therefore essential that they are fitted in a responsible and workmanlike manner. The QWR Fire Collar can be installed to concrete walls and floors, fire rated plasterboard partitions, fire rated plasterboard ceiling/ timber floors and QuelStop Fire Batt so this document should be read in conjunction with all other available relevant information and tested scope of application available from the Quelfire Technical Team.

Installation principles of the QWR CE Marked Fire Collar

A lot of extra work and associated cost can be avoided by early engagement, coordination and good communication between all trades.

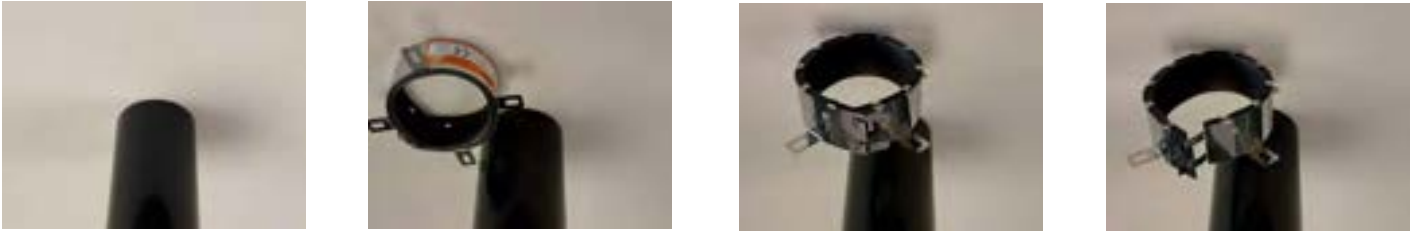
Holes for the pipes should be drilled as close as possible to the outside diameter of the plastic pipes and as given in the table in which case installation will be simple by fixing the collar to the substrate with the correct fixings.

Product Code	Pipe Size (mm)	Approx. space needed around pipe to fit QWR incl. fixing logs (mm)	Recommended hole diameter (mm)
QWR25/CE	25Ø	40	27Ø
QWR32/CE	32Ø	40	34Ø
QWR40/CE	40Ø	35	42Ø
QWR50/CE	50Ø	35	52Ø
QWR55/CE	55Ø	35	57Ø
QWR63/CE	63Ø	55	65Ø
QWR75/CE	75Ø	50	77Ø
QWR82/CE	82Ø	40	84Ø
QWR90/CE	90Ø	50	92Ø
QWR110/CE	110Ø	40	112Ø
QWR125/CE	125Ø	45	132Ø
QWR160/CE	160Ø	50	162Ø

QWR CE MARKED FIRE COLLAR INSTALLATION INSTRUCTIONS

The surface of the wall must be clean and free of loose debris/dust. Any small irregularities between the QWR and the wall, and between the pipe and wall, should be filled by applying QuelStop Intumescent Acrylic Sealant.

The QWR CE Marked Fire Collar can be retrofitted around the pipe by undoing the 2 tabs that hold it together.



The QWR can then be fed around the plastic pipe, wrapped tight and the ends secured together again by passing the tongues on one end through the slots on the other end. The tongues should then be bent back and the unit secured to the substrate through all the fixing lugs with the correct fixings.



Please note, Quelfire are frequently asked and are unable to comment due the lack of any test evidence, on the suitability of fixing the collar with less than the full amount of lugs, for instance 3 out of 4 only due to space restrictions. All lugs must be secured in accordance with the test evidence.

QWR Fire Collars are manufactured specifically to suit individual pipe diameters so select the correct product by determining the outside diameter of the pipe. For example a QWR110/CE suits a 110mm outside diameter plastic pipe and a QWR50/CE suits a 50mm outside diameter plastic pipe and remember:

- 🔧 For vertical pipework, one unit should be installed to the underside of the floor.**
- 🔧 For horizontal pipework one unit should be fitted to both sides of the wall.**

Where the holes are drilled larger than recommended then QF2 Fire Protection Compound or QuelStop Fire Batt will be required or even an alternative system such as an Intuwrap considered so care and communication between trades is the key to a simple installation.

The following pages set out the following installation methods:

1. Installation of the QWR Fire Collar to a concrete floor with correctly diamond drilled hole.
2. Installation of the QWR Fire Collar to a QF2 Fire Protection Compound seal - oversized floor hole.
3. Installation of the QWR Fire Collar to QuelStop Fire Batt seal - oversized floor hole.
4. Installation of the QWR Fire Collar to a fire rated plasterboard ceiling timber floor construction – correct size hole.
5. Installation of the QWR Fire Collar to a fire rated plasterboard ceiling timber floor construction – oversized hole.
6. Installation of the QWR Fire Collar to a concrete or masonry wall - correct size hole.
7. Installation of the QWR Fire Collar to a plasterboard wall - correct size hole.
8. Installation of the QWR Fire Collar to a (single, double or pattress fitted) QuelStop Fire Batt seal - oversized wall hole.

1. Installation of the QWR CE Marked Fire Collar on a plastic pipe penetrating a concrete floor with a correctly diamond drilled hole

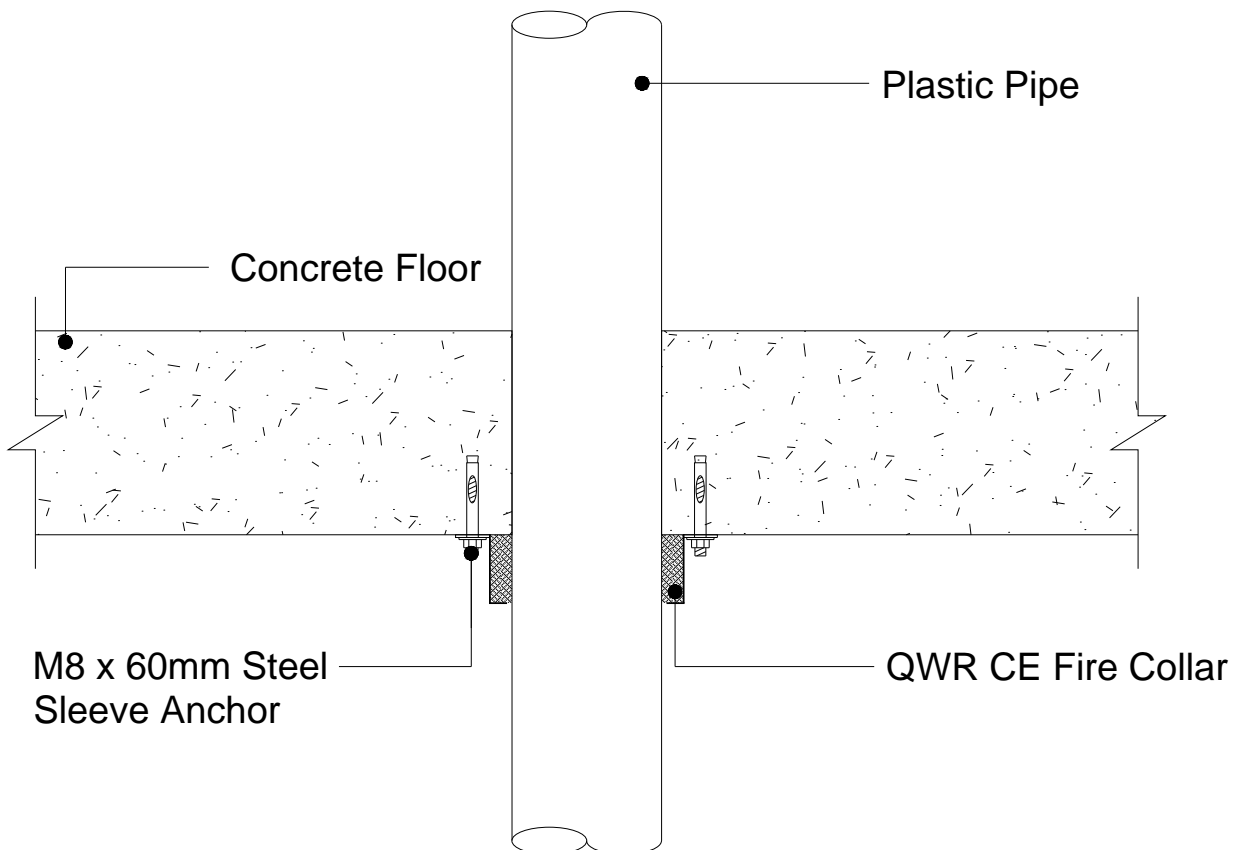
Quelfire Products used:

🔧 QWR CE Marked Fire Collar

Fixings:

🔧 M8 X 60mm Steel Sleeve Anchors

- 1.** Make sure that the surface around the aperture and the services are clean of any debris and remove dust from all edges.
- 2.** Any small irregularities on the face of the slab to which the QWR will be installed can be filled using Quelfire Intumescent Acrylic sealant as can any small gaps around the pipe. Large gaps require QF2 Fire Protection Compound, refer to other relevant details if this is the case.
- 3.** The QWR CE Marked Fire Collar should be fed around the plastic pipe, wrapped tight and the ends secured together by passing the tongues on one end through the slots on the other end. The tongues should then be bent fully back to fully secure it.
- 4.** The QWR Fire Collar should then be secured to the soffit using M8 x 60mm steel sleeve anchors through all integral fixing lugs.



2. Installation of the QWR Fire Collar to QF2 Fire Protection Compound seal – oversized floor hole.

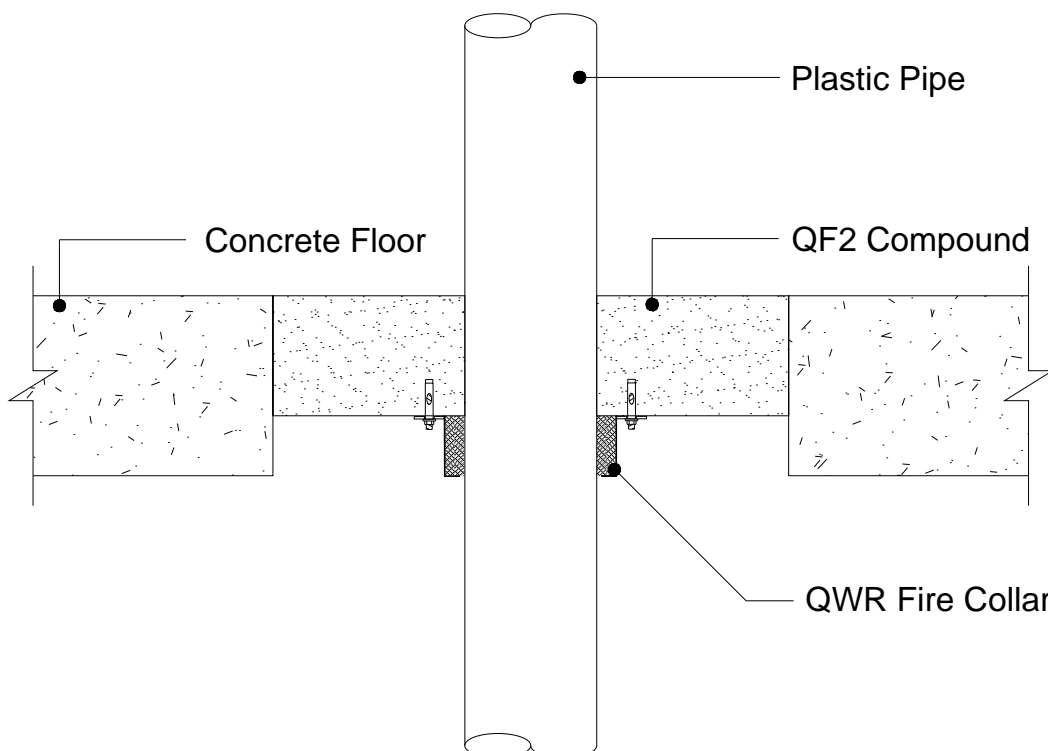
Quelfire Products used:

- 🔩 QWR CE Marked Fire Collar
- 🔩 QF2 Fire Protection Compound
- 🔩 MW Shuttering Slab

Fixings:

- 🔩 M6.5 x 35mm steel sleeve anchors

1. Shutter the hole and install the QF2 Fire Protection Compound to a minimum depth of 100mm in accordance with all other relevant installation information.
2. Once the QF2 has cured, the shutter should be removed.
3. Make sure that the surface of the QF2 is relatively smooth and flat. Any irregularities can be filled using Quelfire Intumescent Acrylic Sealant.
4. The QWR CE Marked Fire Collar should be fed around the plastic pipe, wrapped tight and the ends secured together by passing the tongues on one end through the slots on the other end. The tongues should then be bent fully back to fully secure it.
5. The QWR Fire Collar should then be secured to the QF2 Fire Protection Compound using M6.5 x 35mm steel sleeve anchors through all integral fixing lugs.



3. Installation of the QWR Fire Collar to QuelStop Fire Batt seal - oversized floor hole

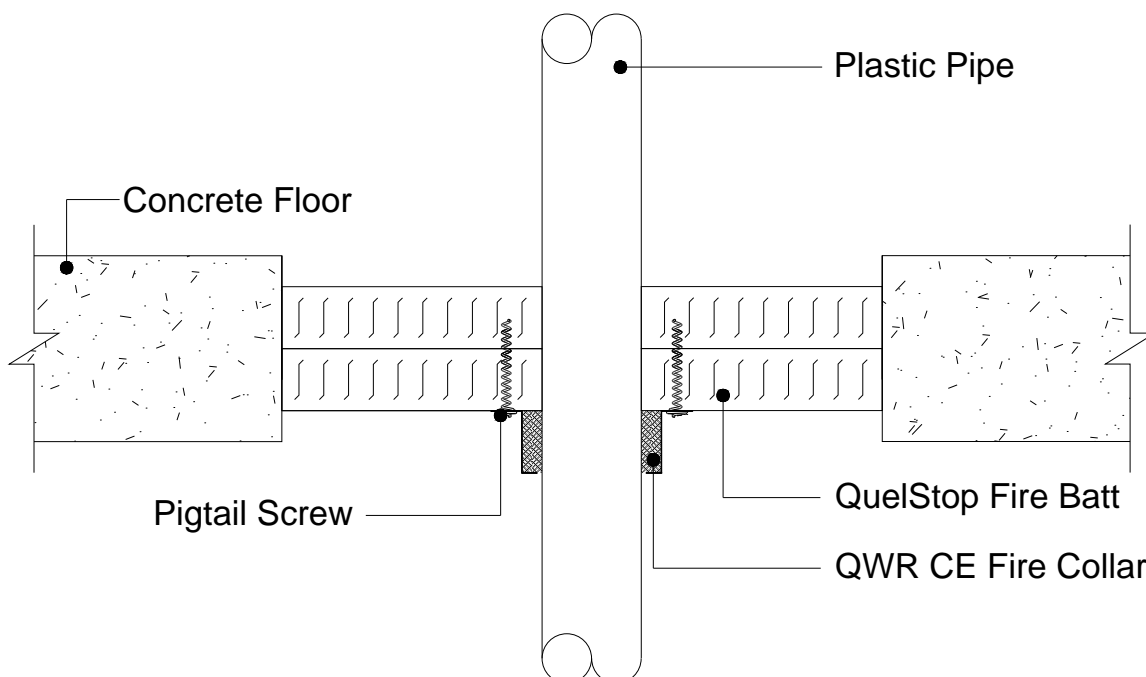
Quelfire Products used:

- 🔩 QWR CE Marked Fire Collar
- 🔩 QuelStop Fire Batt
- 🔩 QuelStop Intumescent Acrylic Sealant
- 🔩 QuelStop Ablative Coating

Fixings:

- 🔩 75mm long pig tail screws

1. Install a double layer of QuelStop Fire Batt using QuelStop Intumescent Acrylic Sealant and QuelStop Ablative Coating in accordance with all other relevant installation information.
2. Make sure that the surface around the aperture and the services are clean of any debris and remove dust from all edges.
3. The QWR CE Marked Fire Collar should be fed around the plastic pipe, wrapped tight and the ends secured together by passing the tongues on one end through the slots on the other end. The tongues should then be bent fully back to fully secure it.
4. The QWR Fire Collar should then be secured to the QuelStop Fire Batt using 75mm steel pigtail screws through all integral fixing lugs.
5. Apply QuelStop Ablative Coating to repair any damage to the QuelStop Fire Batt coating that may have occurred during installation.



4. Installation of the QWR Fire Collar to a fire rated plasterboard ceiling/timber floor construction – correct size hole

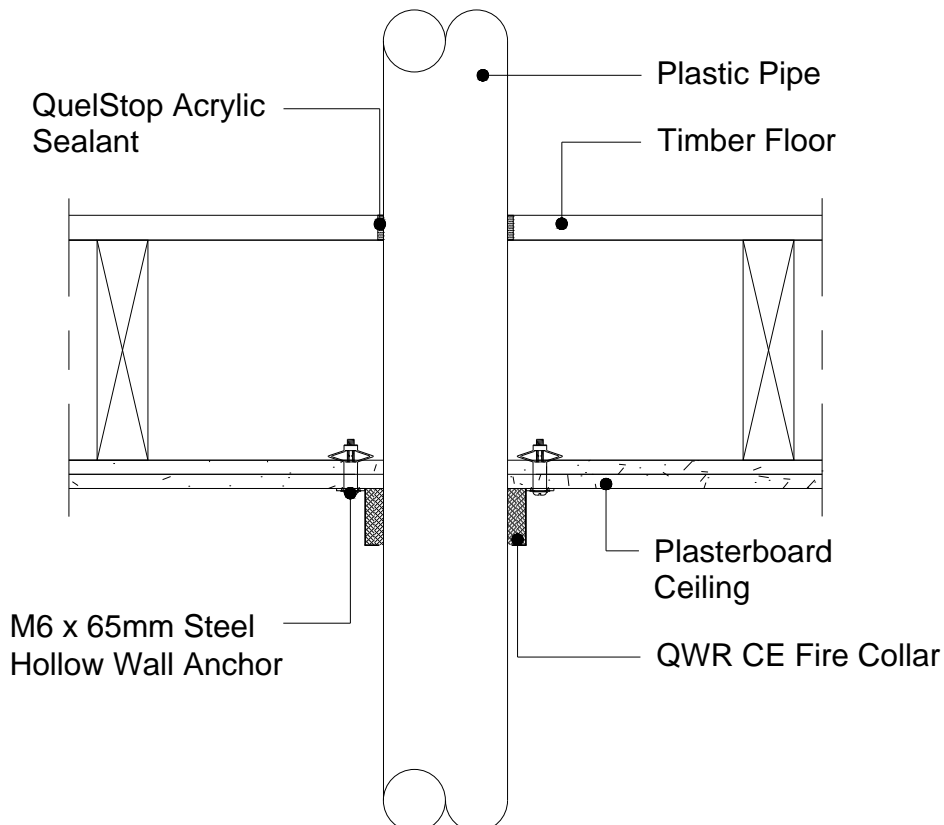
Quelfire Products used:

- 🔗 QWR CE Marked Fire Collar
- 🔗 QuelStop Intumescent Acrylic Sealant

Fixings:

- 🔗 M6 X 65mm steel hollow wall anchors

- 1.** Make sure that the surface around the aperture and the services are clean of any debris and remove dust.
- 2.** Any small gaps around the pipe can be filled using Quelfire Intumescent Acrylic Sealant.
- 3.** The QWR Fire Collar should be fed around the plastic pipe, wrapped tight and the ends secured together by passing the tongues on one end through the slots on the other end. The tongues should then be bent fully back to fully secure it.
- 4.** The QWR Fire Collar should then be secured to fire rated plasterboard using M6 x 65mm steel hollow wall anchors through all integral fixing lugs.
- 5.** Finally, QuelStop Acrylic Sealant should be applied around the plastic pipe on the upper face of the floor acting as a smoke seal.



5. Installation of the QWR Fire Collar to a fire rated plasterboard ceiling/timber floor construction – oversized hole

Quelfire Products used:

- 🔧 QWR CE Marked Fire Collar
- 🔧 QuelStop Fire Batt
- 🔧 QuelStop Intumescent Acrylic Sealant
- 🔧 QuelStop Ablative Coating

Fixings:

- 🔧 75mm long steel pig tail screws
- 🔧 6mm x 80mm Steel Screws
- 🔧 35mm washers

1. Refer to the relevant supporting documentation and installation guides for QuelStop Fire Batt, check dimensions and cut the QuelStop Fire Batt to the size and shape required to patress fit the aperture, ensuring the batt will overlap the aperture on all sides by at least 50mm and fit tight around the plastic pipe.

2. The QuelStop Fire Batt can be cut across its width at the midpoint to allow the QuelStop Fire Batt to be fitted around the pipe retrospectively.

3. Apply QuelStop Intumescent Acoustic Acrylic Sealant to the edges of the cut made across the QuelStop Fire Batt to allow it to be fitted around the pipe.

4. Apply QuelStop Intumescent Acoustic Acrylic Sealant to the face of the plasterboard, around the opening of the aperture where the QuelStop Fire Batt is to overlap/patress fit.

5. Place the sections of QuelStop Fire Batt onto the ceiling ensuring they are butted up tight around the pipe and against the plasterboard then mechanically fix using 6 x 80mm steel screws and 35mm diameter penny washers in the corners of the QuelStop Batt seal.

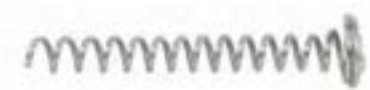
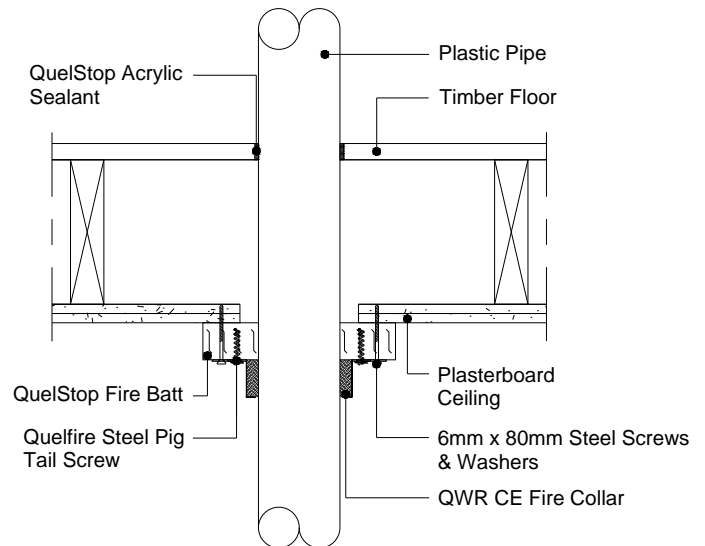
6. Apply QuelStop Intumescent Acoustic Acrylic Sealant to all the edges of the exposed mineral wool of the QuelStop Fire Batt. Use a spatula to smooth the QuelStop Intumescent Acoustic Acrylic Sealant evenly to cover over the entire thickness of the QuelStop Fire Batt.

7. The QWR Fire Collar should be then fed around the plastic pipe, wrapped tight and the ends secured together by passing the tongues on one end through the slots on the other end. The tongues should then be bent fully back to fully secure it.

8. The QWR CE Marked Fire Collar should then be secured to the QuelStop Fire Batt using 75mm long pig tail screws in all integral fixing lugs.

9. Apply QuelStop Ablative Coating to repair any damage to the QuelStop Fire Batt coating that may have occurred during installation and to the face of the screws and washers.

10. Finally, QuelStop Acrylic Sealant should be applied around the plastic pipe on the upper face of the floor acting as a smoke seal.



6. Installation of the QWR Fire Collar to a concrete or masonry wall – correct size hole

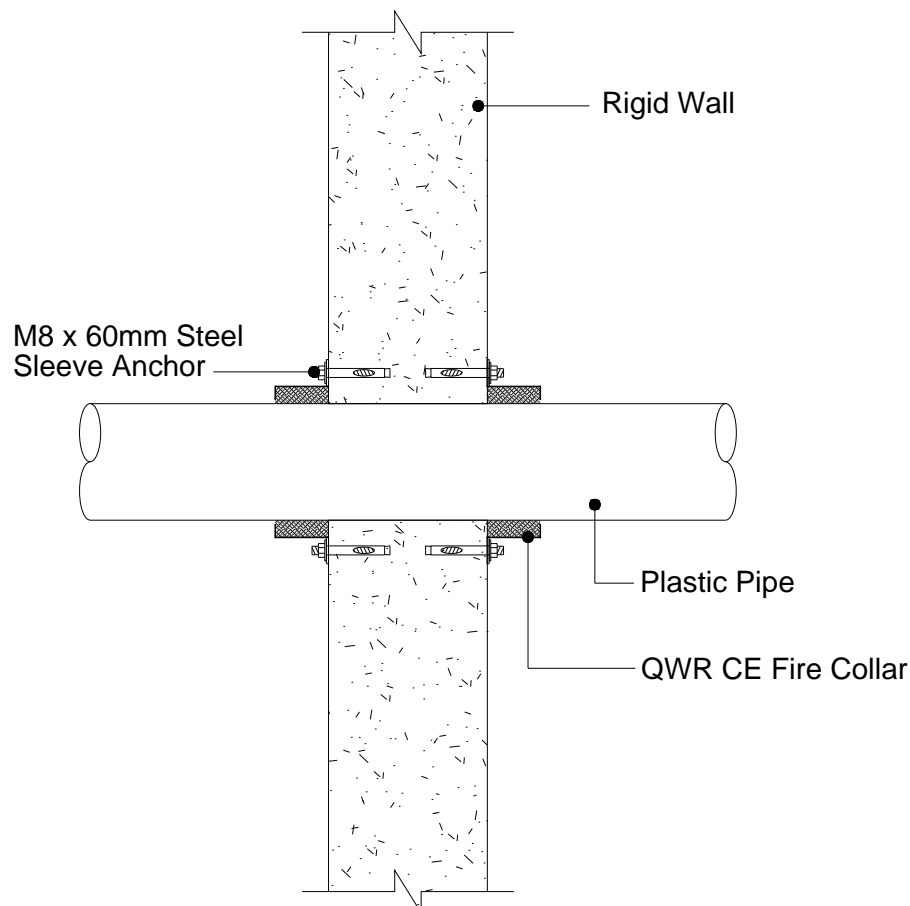
Quelfire Products used:

🔩 QWR CE Marked Fire Collar

Fixings:

🔩 M8 X 60mm Steel Sleeve Anchors

- 1.** Make sure that the surface around the aperture and the services are clean of any debris and remove dust from all edges.
- 2.** Any small irregularities on the face of the wall to which the QWR will be installed can be filled using Quelfire Intumescent Acrylic sealant as can any small gaps around the pipe.
- 3.** The QWR CE Marked Fire Collar should be fed around the plastic pipe, wrapped tight and the ends secured together by passing the tongues on one end through the slots on the other end. The tongues should then be bent fully back to fully secure it.
- 4.** The QWR Fire Collar should then be secured to the wall using M8 x 60mm steel sleeve anchors through all integral fixing lugs.
- 5.** Repeat steps 1 to 4 on the other side of the wall so that a pair of QWR Fire Collars is installed.



7. Installation of the QWR Fire Collar to a plasterboard wall – correct size hole

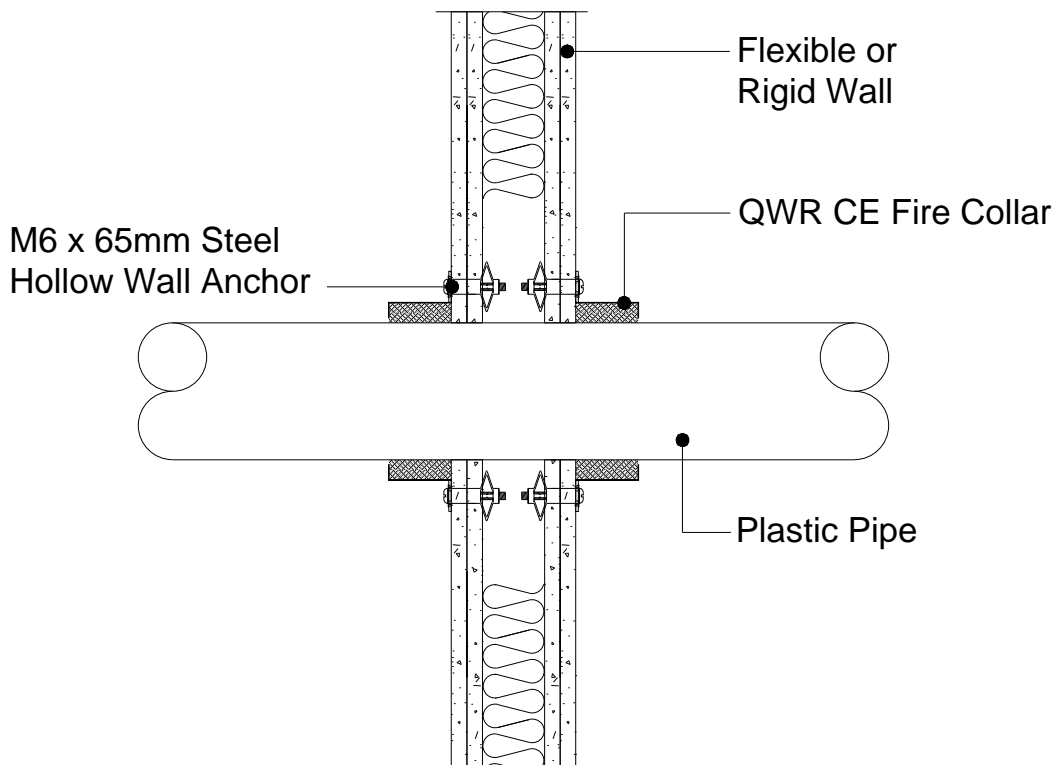
Quelfire Products used:

🔧 QWR CE Marked Fire Collar

Fixings:

🔧 M6 X 65mm Steel hollow wall Anchors

- 1.** Make sure that the surface around the aperture and the services are clean of any debris and remove dust from all edges.
- 2.** Any small gaps around the pipe can be filled using Quelfire Intumescent Acrylic Sealant.
- 3.** The QWR Fire Collar should be fed around the plastic pipe, wrapped tight and the ends secured together by passing the tongues on one end through the slots on the other end. The tongues should then be bent fully back to fully secure it.
- 4.** The QWR Fire Collar should then be secured to the wall using M6 x 65mm steel hollow wall anchors through all integral fixing lugs.
- 5.** Repeat steps 1 to 4 on the other side of the wall so that a pair of QWR Fire Collars are installed.



QWR CE MARKED FIRE COLLAR INSTALLATION INSTRUCTIONS

8. Installation of the QWR to a (single, double or pattress fitted) QuelStop Fire Batt seal - oversized wall hole

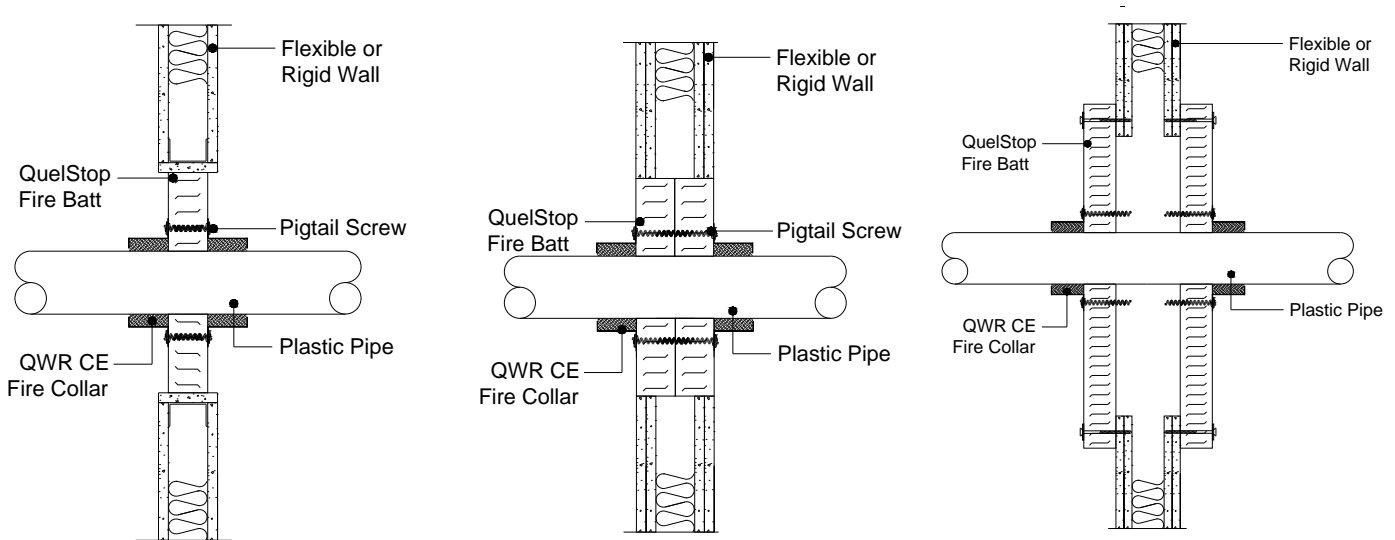
Quelfire Products used:

- 🔩 QWR CE Marked Fire Collar
- 🔩 QuelStop Fire Batt
- 🔩 QuelStop Intumescent Acrylic Sealant
- 🔩 QuelStop Ablative Coating

Fixings:

- 🔩 75mm long steel pigtail screws for pattress and double batt details
- 🔩 40mm long long steel pig tail screws – for single batt details

The QWR Fire Collar has been tested in a number of different scenarios in conjunction with QuelStop Fire Batt, for full details on how to install the QuelStop Fire Batt refer to the relevant documentation and installation guides. A summary of the typical details is as follows:



The core principles behind installing the QWR Fire Collar to the QuelStop Batt, in whatever scenario the batt is installed remain the same:

- 1.** Make sure that the surface of the QuelStop Fire Batt and the services are clean of any debris and remove dust from all edges.
- 2.** Apply QuelStop Intumescent Acrylic Sealant or QuelStop Ablative Coating to any damaged QuelStop Fire Batt coating.
- 3.** The QWR Fire Collar should be fed around the plastic pipe, wrapped tight and the ends secured together by passing the tongues on one end through the slots on the other end. The tongues should then be bent fully back to fully secure it.
- 4.** The QWR Fire Collar should be secured to the QuelStop Fire Batt using steel pig tail screws, of the correct length to suit the detail, through all integral fixing lugs.
- 5.** Repeat steps 1 to 4 on the other side of the wall, Quelfire recommend that the lug fixings are positioned in a way to not interfere with the fixings on the other side of the QuelStop Fire Batt.
- 6.** Finally, apply QuelStop Ablative Coating to repair any damage to the QuelStop Fire Batt coating that may have occurred during installation.



Packaging & Storage:

Quelfire QWR Fire Collars are supplied individually to suit specific pipe diameters of plastic pipe and may be packaged in cardboard boxes for shipping purposes and should be stored in a cool, dry location.

Health & Safety:

QWR CE Marked Fire Collars consist of a pressed stainless steel shell containing graphite in a synthetic compound with the addition of filters and process oils.

The steel shells can have sharp edges, always wear gloves when handling.

For further information, please refer to the Material Safety Data Sheets, available on request or via the website.

Technical Support & Guidance:

Should you require any further information regarding this product, please do not hesitate to contact the technical department at Quelfire Ltd.

Tel: **0161 928 7308**. Email: technical@quelfire.co.uk

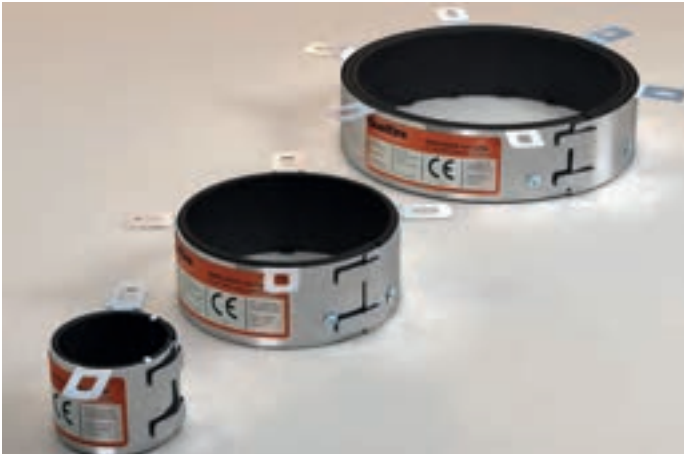
Please be aware that this document is intended for general information only and all details should be checked against all relevant supporting test evidence, certification and installation guidelines. Use of alternative components or deviations from the instructions in any way is likely to mean that the installation will not comply with the assessed rating.

Quelfire Ltd does not accept responsibility for the consequences of using Quelfire products in applications or for purposes not authorised by Quelfire Ltd. Expert advice should be sought where such applications are contemplated.

The policy of Quelfire Ltd is one of constant improvement. Installers should therefore ensure they are working from the latest published drawings and instructions. Whilst Quelfire will endeavour to keep its publications up to date, the accuracy of the information contained within this drawing may be affected by pertinent changes in the law or regulatory requirements and alterations or amendments to the specification of Quelfire products.

All information contained in this document is given in good faith and is provided for guidance only. Any drawings provided are for illustrative purposes only. As Quelfire Ltd has no control over the methods or competence of installation and of prevailing site conditions, no warranties, expressed or implied, is intended to be given as to the actual performance of the product mentioned or referred to herein and no liability whatsoever will be accepted for any loss, damage or injury arising from the use of the information given.

Quelfire QWR CE Marked Fire Collars prevent the spread of fire where PVC, HDPE & PP pipes penetrate fire compartment walls and floors.



QWR CE Marked Fire Collars



QWR CE Marked Fire Collar installed on concrete floor

FEATURES & BENEFITS

- Tested to BSEN 1366-3: 2009
- Classified according to EN 13501-2: 2007 + A1: 2009
- CE Marked
- Up to 4 hour fire rating
- Suitable for PVC, PVC-U, PE, HDPE, MDPE & PP pipes
- Available for 25-160mm pipes
- Can be retrofitted
- Performance unaffected by weathering (Type X Durability)
- Compatible with the QuelStop System - QuelStop Fire Batt & QF2 Fire Protection Compound
- Tested for use on concrete and masonry floors & walls
- Tested for use on flexible walls - fire rated partition walls
- Tested on a plasterboard ceiling/timber floor in accordance with the principles of BS EN1366-3:2009



QWR CE Marked Fire Collar installed on plasterboard wall

COMPOSITION

The QWR CE Marked Fire Collars consist of a continuous pressed stainless steel flexible shell containing high performance graphite based intumescent material which reacts under the influence of heat to exert pressure on the pipe as it softens to form a carbonaceous char which provides an effective insulation plug thus preventing fire passing through to the adjoining compartment. The QWR CE Marked Fire Collar has built in fixing lugs which are used to secure it to the structure.

DURABILITY

Tested to Type X durability which means the QWR Fire Collars can be installed in conditions exposed to weathering.



The Warringtonfire Logo displayed is the trademark of Warringtonfire registered in the United Kingdom. The Warringtonfire Logo is evidence that the products denoted as 'Tested by Warringtonfire' were tested to BSEN 1366-3: 2009 in England between September 22nd 2015 and January 7th 2021



This product is CE Marked.

APPLICATION / INSTALLATION

Quelfire QWR CE Marked Fire Collars should be used where a plastic pipe penetrates a fire rated wall or floor.

- 🔩 **For vertical pipework, one unit should be installed to the underside of the floor.**
- 🔩 **For horizontal pipework one unit should be fitted to both sides of the wall.**

The surface of the wall must be clean and free of loose debris/dust and any irregularities between the QWR and the wall, and between the pipe and wall, should be filled by applying QuelStop Intumescent Acrylic Sealant.

Holes for the pipes should be drilled as close as possible to the outside diameter of the plastic pipes and are described in the “performance” table later in this document.

If the holes are drilled too large then QF2 Fire Protection Compound or QuelStop Fire Batt will be required or even an alternative system such as an Intuwrap so care and communication between trades is the key to a simple installation.

The QWR CE Marked Fire Collar should be fed around the plastic pipe, securing the ends together by passing the tongues on one end through the slots on the other end. The tongues should then be bent back and the unit secured to the structure using the correct fixings through all the lugs.

(It is not a tested solution to not use all the lugs so space should be allowed for the fixing of the QWR Fire Collar during design and installation of the pipework.)

A full set of installation details and a step by step guide are available and we recommend you check all available data before commencing installation but in principle the QWR Fire Collar can be fixed as follows:

- 🔩 **To concrete and masonry walls and floors using M8x60mm steel sleeve anchors.**
- 🔩 **To plasterboard fire rated partitions using throughbolts or M6x65mm steel hollow wall anchors (to suit the correct plasterboard thickness).**
- 🔩 **To QuelStop Fire Batt using steel pigtail screws.**



Quelfire QWR Fire Collars have also been tested generally in accordance with the BS EN 1366-3: 2009 fitted to a plasterboard ceiling/timber floor both direct to the plasterboard and also in conjunction with pattress fitted QuelStop Fire Batt.

For full details of the tested scope of application and for installation details for each scenario please contact the Quelfire Technical Team or website.

PERFORMANCE

QWR CE Marked Fire Collars are suitable for use in concrete floors with plastic pipes including HDPE, PVC and PP in concrete floors providing up to 4 hours integrity.

They are also tested fixed to QF2 Fire Protection Compound and QuelStop Fire Batt seals providing up to 2 hours integrity.

For full details and performance information contact the Quelfire Technical Team:

Product Code	Pipe Size (mm)	Approx. space needed around pipe to fit QWR incl. fixing logs (mm)	Recommended hole diameter (mm)	QWR Length (mm)	Fire Rating
QWR25/CE	25Ø	40	27Ø	50	Up to 4 Hours
QWR32/CE	32Ø	40	34Ø	50	Up to 4 Hours
QWR40/CE	40Ø	35	42Ø	50	Up to 4 Hours
QWR50/CE	50Ø	35	52Ø	50	Up to 4 Hours
QWR55/CE	55Ø	35	57Ø	50	Up to 4 Hours
QWR63/CE	63Ø	55	65Ø	50	Up to 4 Hours
QWR75/CE	75Ø	50	77Ø	50	Up to 4 Hours
QWR82/CE	82Ø	40	84Ø	50	Up to 4 Hours
QWR90/CE	90Ø	50	92Ø	50	Up to 4 Hours
QWR110/CE	110Ø	40	112Ø	50	Up to 4 Hours
QWR125/CE	125Ø	45	132Ø	50	Up to 4 Hours
QWR160/CE	160Ø	50	162Ø	50	Up to 4 Hours
QWR55/CE/2	55Ø	35	57Ø	50	Up to 2 Hours
QWR110/CE/2	110Ø	35	112Ø	50	Up to 2 Hours
QWR125/CE/2	125Ø	45	132Ø	50	Up to 2 Hours

Technical Support & Guidance:

Should you require any further information regarding this product, please do not hesitate to contact the technical department at Quelfire Ltd.

Tel: **0161 928 7308**. Email: technical@quelfire.co.uk

Please be aware that this document is intended for general information only and all details should be checked against all relevant supporting test evidence, certification and installation guidelines.

Use of alternative components or deviations from the instructions in any way is likely to mean that the installation will not comply with the assessed rating.

Quelfire Ltd does not accept responsibility for the consequences of using Quelfire products in applications or for purposes not authorised by Quelfire Ltd. Expert advice should be sought where such applications are contemplated.

The policy of Quelfire Ltd is one of constant improvement. Details are subject to change and/or withdrawal without notification therefore you must ensure this is the latest published documentation. Whilst Quelfire will endeavour to keep its publications up to date, the accuracy of the information contained within this document may be affected by pertinent changes in the law or regulatory requirements and alterations or amendments to the specification of Quelfire products.

All information contained in this document is given in good faith and is provided for guidance only. Any drawings provided are for illustrative purposes only. As Quelfire Ltd has no control over the methods or competence of installation and of prevailing site conditions, no warranties, expressed or implied, is intended to be given as to the actual performance of the product mentioned or referred to herein and no liability whatsoever will be accepted for any loss, damage or injury arising from the use of the information given. Full terms and conditions can be accessed at: <https://quelfire.co.uk/terms-conditions-of-sale/>

DECLARATION OF PERFORMANCE

According to Annex III of Regulation (EU) Nr. 305/2011 (Construction Products Regulation)

QUELFIRE QWW INTUWRAPS

1. Unique identification code of the product-type:

Quelfire QWW Intuwrops

2. Type, batch or serial number as required pursuant to Article 11(4):

See batch number displayed on the product

3. Intended use or uses of the construction product, in accordance with the applicable harmonised technical specification:

Fire stopping and sealing Product for Penetration Seals, see ETA 20/1205

Pipe penetrations	Plastic pipes	The field of application has to comply with the content of the related ETA 20/1205
-------------------	---------------	---

4. Name, registered trade name or registered trademark and contact address as required pursuant to Article 11(5): Quelfire Ltd, Unit

3, Millbuck Way, Springvale Industrial Estate, Sandbach, Cheshire, CW11 3HT,

Tel: 0161 928 7308, Email: sales@quelfire.co.uk

5. Authorised representative: n.a.

6. System or systems of assessment and verification of constancy of performance of the construction product as set out in Annex V:

System 1

7. Harmonised standard: n.a.

8. In the case of the declaration of performance concerning product covered by a Harmonised Standard and/or ETA: Warrington


Certification Ltd issued ETA Number 20/1205 on the basis of Guideline for European Technical Approval of Fire Stopping and Fire Sealing Products: EAD 350454-00-1104 Issue September 2017 performed initial and continuous surveillance of the place of manufacture and the factory production control implemented, sampled product and witnessed initial type testing under system 1 and issued the Certificate of Constancy of Performance 2812-CPR-JA5104

9. Declared performance:

Essential Characteristic	Declared performance/Harmonised technical specification
Reaction to fire	Class F according to EN 13501-1
Resistance to fire	Resistance to fire performance and field application in accordance with EN 13501-2 see ETA 20/1205
Dangerous substances	See ETA 20/1205 – Declaration – compliant
Durability and serviceability	Type: X intended for use in conditions exposed to weathering in accordance with EAD 350454-00-1104 Issue September 2017, EOTA Technical Report – TR024
Other	Not applicable/No performance determined

10. The performance of the product identified in points 1 and 2 is in conformity with the declared performance in point 6. This declaration of performance is issued under the sole responsibility of the manufacturer identified in point 4.

Signed for and on behalf of the manufacturer.



Keith Wells
Managing Director
Quelfire Ltd



Darryl Wells
Product Development
Quelfire Ltd

Notified Body No. 2812

Certificate of Constancy of Performance

2812-CPR-JA5104

In compliance with *Regulation 305/2011/EU of the European Parliament and of the Council of 9 March 2011* (the Construction Products Regulation or CPR), this certificate applies to the construction product:

QWW Wraps

Intended use: Penetration Seals

Essential characteristics	Performance according to	Technical specification
Reaction to fire	ETA 20/1205	EAD 350454-00-1104 Issue: September 2017 Fire Stopping and Fire Sealing Products: Penetration Seals
Resistance to fire		
Dangerous substances		

Certificate of Constancy of Performance

2812-CPR-JA5104

Placed on the Market under the Name of

**QUELFIRE LTD
Unit 3 Millbuck Way
Springvale Industrial Estate
Sandbach
Cheshire
CW11 3HT**

and produced in the manufacturing plant

E/230

This is coded format and the information is held by the Notified Body

This certificate attests that all provisions concerning the Assessment and Verification of Constancy of Performance described in:

ETA 20/1205 issued on 17/12/2020

And

EAD 350454-00-1104

Under System 1 for the performance set out in the ETA are applied and that the Factory Production Control conducted by the manufacturer is assessed to ensure the Constancy of Performance of the Construction Product.

This certificate was first issued on 23/11/2020 and revised on 20/07/2021 will remain valid as long as neither the ETA, the EAD, the Construction Product, the AVCP methods nor the manufacturing conditions in the plant are modified significantly, or unless suspended or withdrawn by the Notified Product Certification Body.

Valid to: **27/08/2023**

ERO Project Reference: **ERO 034621 P1110**



Paul Duggan
Certification Manager

MATERIAL SAFETY DATA SHEET

Product name	Quelfire CE Marked QWW Intuwrap
Product Code(s)	QWW25/CE, QWW32/CE, QWW40/CE, QWW50/CE, QWW55/CE, QWW63/CE, QWW75/CE, QWW82/CE, QWW90/CE, QWW110/CE, QWW125/CE, QWW160/CE
Revision Date	01/01/2021
Revision number	02

Section 1: Identification of the substance/mixture and of the company / undertaking

1.1. Product identifier

Product name	Quelfire CE Marked QWW Intuwrap
Product Code	QWW25/CE, QWW32/CE, QWW40/CE, QWW50/CE, QWW55/CE, QWW63/CE, QWW75/CE, QWW82/CE, QWW90/CE, QWW110/CE, QWW125/CE, QWW160/CE

1.2. Relevant identified uses of the substance or mixture and uses advised against

Not applicable

1.3. Details of the supplier of the safety data sheet

Company Name	Quelfire Limited Springvale Industrial Estate Millbuck Way Sandbach CW11 3HT
Tel	0161 928 7308
Fax	0161 924 1340
Email	technical@quelfire.co.uk

1.4. Emergency telephone number

Emergency telephone number	0161 928 7308 (Office hours only)
----------------------------	-----------------------------------

Section 2: Hazards Identification

2.1. Classification of the substance or mixture

Classification under CLP	Not Classified
--------------------------	----------------

2.2. Label elements

This product has no label elements

2.3. Other hazards

This product is not identified as a PBT/ vPvB substance

Section 3: Composition/information on ingredients

3.1. Substances

Thermoplastic sheet composition containing intercalated graphite in a synthetic compound with the addition of filters and process oils. The intumescent element is contained within a polythene sleeve.

3.2. Mixtures

MATERIAL SAFETY DATA SHEET

No data available

Section 4: First aid measures

4.1. Description of first aid measures

Skin contact	It is possible that handling of the composite interior could cause skin irritation, in which case first rinse with water and remove fragments of the composite material, then wash with plenty of soap and water. Do not use organic solvents.
Eye contact	Rinse with water and seek medical attention.
Ingestion	If ingested do not induce vomiting, seek medical attention
Inhalation	Consult a doctor

4.2. Most important symptoms and effects, both acute and delayed

Skin contact	There may be mild irritation at the site of contact
Eye contact	There may be irritation and redness
Ingestion	There may be irritation of the throat
Inhalation	There may be irritation of the throat with a feeling of tightness in the chest.

4.3. Indication of any immediate medical attention and special treatment needed

Immediate/special treatment	Not applicable
-----------------------------	----------------

Section 5: Fire-Fighting measures

5.1. Extinguishing media

Suitable Extinguishing Media	Water, CO2, Foam and/ or dry powder
------------------------------	-------------------------------------

5.2. Special hazards arising from the substance or mixture

Exposure hazards	In combustion emits toxic fumes
------------------	---------------------------------

5.3. Advice for fire-fighters

Advice for fire-fighters	Wear self-contained breathing apparatus. Wear suitable proactive clothing to prevent contact with skin and eyes
--------------------------	---

Section 6: Accidental release measures

6.1. Personal precautions, protective equipment and emergency procedures

Refer to section 8 'Exposure controls/ personal protection'.
--

6.2. Environmental precautions

Environmental	Do not discharge into drains or rivers.
---------------	---

6.3. Methods and materials for containment and cleaning up

Clean-up procedures	Wash the spillage site with large amounts of water.
---------------------	---

6.4. Reference to other sections

Refer to section 8 'Exposure controls/ personal protection'

Section 7: Handling and storage

7.1. Precautions for safe handling

MATERIAL SAFETY DATA SHEET

Handling requirements	Avoid the formation or spread of dust in the air Avoid handling interior composite material
-----------------------	--

7.2. Conditions for safe storage, including any incompatibilities

Storage conditions	Store in cool, well ventilated area.
--------------------	--------------------------------------

7.3. Specific end use(s)

Specific end use(s)	No data available
---------------------	-------------------

Section 8: Exposure controls/personal protection

8.1. Control parameters

No data available

8.2. Exposure controls

Respiratory protection	Not normally required. However secondary operations, such as drilling may generate dust so in these operations a suitable Respiratory protective device with particle filter should be worn
Hand protection	Protective gloves
Eye protection	Safety glasses. Ensure eye bath is to hand.
Skin protection	Protective clothing

Personal protective equipment symbol(s):



Section 9: Physical and chemical properties

9.1. Information on basic physical and chemical properties

State	Solid
Odour	Odourless

9.2. Other information

Solubility – insoluble in water and generally chemical inert
--

Section 10: Stability and reactivity

10.1. Reactivity

Stable under recommended transport or storage conditions
--

10.2. Chemical stability

Stable under normal conditions

10.3. Possibility of hazardous reactions

Hazardous reactions will not occur under normal transport or storage conditions. Decomposition may occur on exposure to conditions or materials listed below.

10.4. Conditions to avoid

☎ 0161 928 7308	✉ sales@quelfire.co.uk	🌐 www.quelfire.co.uk
-----------------	------------------------	----------------------

MATERIAL SAFETY DATA SHEET

Heat

10.5. Incompatible materials

Strong oxidising agents. Strong acids

10.6. Hazardous decomposition products

In combustion emits toxic fumes

Section 11: Toxicological information

11.1. Information on toxicological effects

Non-toxic in solid state

Section 12: Ecological information

12.1. Toxicity

No data available

12.2. Persistence and degradability

Biodergradable

12.3. Bioaccumulative potential

Not potentially Bioaccumulative

12.4. Mobility in soil

No data available

12.5 Results of PBT and vPvB assessment

This product is not identified as a PBT/ vPvB substance

12.6. Other adverse effects

Negligible ecotoxicity

Section 13: Disposal considerations

13.1. Waste treatment methods

Regional legislation (waste)	Disposal must be done according to official regulations.
Waste treatment methods	Dispose of contents/ container in accordance with licensed collector's sorting instructions

Section 14: Transport information

This product does not require a classification for transport

14.6. Special Precautions for user

Overland Transport	Not Applicable
Transport by sea	Not Applicable
Air transport	Not Applicable
Inland waterway transport	Not Applicable
Rail transport	Not Applicable

Section 15: Regulatory information

MATERIAL SAFETY DATA SHEET

15.1. Safety, health and environmental regulations/legislation specific for the substance or mixture

No additional information available

15.2. Chemical Safety Assessment

Chemical Safety Assessment	No chemical safety assessment has been carried out
----------------------------	--

Section 16: Other information

Other information	This safety data sheet is prepared in accordance with Commission Regulation (EU) No 453/2010. *indicates text in the SDS which has changed since last revision.
Legal disclaimer	The above information is believed to be correct but does not purport to be all inclusive and shall be used only as a guide. This company shall not be held liable for any damage resulting from handling or from contact with the above product.

This installation guide is intended for general information only and all details should be checked against relevant supporting test evidence and certification.



Quelfire QWW CE Marked Intuwrops are lifesaving products designed to prevent the spread of fire where plastic pipes penetrate fire compartment floors. It is therefore essential that they are fitted in a responsible and workmanlike manner.

The QWW Intuwrap is only suitable for use in concrete floors and generally installed in conjunction with Quelfire QF2 Fire Protection Compound so this document should be read in conjunction with all other available relevant information and tested scope of application available from the Quelfire Technical Team.

Installation principles of the QWW CE Marked Intuwrap

A lot of extra work and associated cost can be avoided by early engagement, coordination and good communication between all trades. For example where the correct diameter hole is diamond drilled as per the table given below, no shuttering will be required and installation is very simple requiring a simple backfill on top of the QWW as described in the section headed "Installation of the QWW Intuwrap to a plastic pipe in a correctly diamond drilled hole."

Product Code	Pipe Size mm	Recommended hole diameter (mm)
QWW32/CE	32Ø	42Ø
QWW40/CE	40Ø	50Ø
QWW50/CE	50Ø	60Ø
QWW55/CE	55Ø	74Ø
QWW63/CE	63Ø	82Ø
QWW75/CE	75Ø	94Ø
QWW82/CE	82Ø	102Ø
QWW90/CE	90Ø	110Ø
QWW110/CE	110Ø	132Ø
QWW125/CE	125Ø	155Ø
QWW160/CE	160Ø	204Ø

Where holes are incorrectly drilled oversize or larger square holes are left or formed then refer to the latter section of this document headed "Installation of the QWW Intuwrap to a plastic pipe in an oversized hole."

QWW Intuwrops are manufactured specifically to suit individual pipe diameters so select the correct product by determining the outside diameter of the pipe. A QWW110/CE suits a 110mm outside diameter plastic pipe and a QWW50/CE suits a 50mm outside diameter plastic pipe for example.

The orange plastic sleeve is an integral part of the QWW Intuwrap so should not be removed.

Installation of the QWW Intuwrap to a plastic pipe in a correctly diamond drilled hole

Quelfire Products used:

- 🔧 QWW Intuwrap
- 🔧 QF2 Fire Protection Compound

1. Select the correct product to suit the pipe diameter.
2. Check the sides of the pipe and hole are relatively clean of debris and there are no obstructions such as concrete splashes.
3. Remove and discard the backing paper from the end of the self-adhesive tab on the QWW.



4. Wrap the QWW tight around the pipe and secure the ends together using the self-adhesive tab.
5. Slide the QWW Intuwrap into the correct position. The bottom edge of the QWW Intuwrap should be flush with the bottom edge of the concrete slab with a minimum of 40mm of cover between the top of the QWW Intuwrap and the top of the concrete slab.



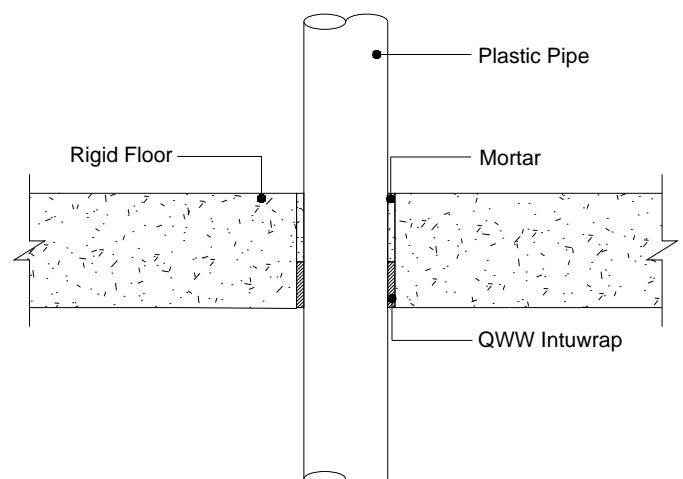
A common misunderstanding is that the wrap protrudes from the underside of the slab but this is **not** a Quelfire tested detail and cannot be rectified if installed in this way. The QWW must be flush with the underside of the slab.

There should be no gap between the QWW Intuwrap and the concrete slab. If there is a gap then refer to the latter section covering oversized holes and the requirement for QF2 Fire Protection Compound.

6. Double check the QWW Intuwrap is positioned correctly to facilitate the correct depth of required backfill, usually 40mm, as set out in the installation details and tested scope of application.
(Note that steel profiled decks are an exception requiring 15mm of QF2 Fire Protection Compound and a reduced fire rating as per the Quelfire assessment.)




7. Because the hole has been drilled the correct size there should be no requirement to shutter the hole underneath but the remaining space on top of the QWW Intuwrap should now be backfilled.

Quelfire recommend the use of QF2 Fire Protection Compound – refer to relevant supporting documentation on the mixing and installation of QF2 Fire Protection Compound.



Installation of the QWW Intuwrap to a plastic pipe in an oversized hole

Quelfire Products used:

-  QWW Intuwrap
-  QF2 Fire Protection Compound
-  MW Shuttering Slab

- 1.** Select the correct product to suit the pipe diameter.
- 2.** Check the sides of the pipe and hole are relatively clean and dust free.
- 3.** Remove and discard the backing paper from the end of the self-adhesive tab on the QWW.



- 4.** Wrap the QWW tight around the pipe and secure the ends together using the self-adhesive tab.
- 5.** Cut slightly oversized and friction fit the Quelfire MW Shuttering Slab into the opening around the services within the aperture ensuring a tight fit and that the correct minimum depth of the QF2 Fire Protection Compound (usually 100mm) can be achieved. Consider temporary support if required.
- 6.** Slide the QWW Intuwrap into the correct position. The bottom edge of the QWW Intuwrap should be sitting flush on the shuttering.



A common misunderstanding is that the wrap protrudes from the underside of the slab/fire protection compound but this is **not** a Quelfire tested detail and cannot be rectified if installed in this way. The QWW must be flush with the underside of the seal.

- 7.** Mix the QF2 Fire Protection Compound with clean water in a plastic container or bucket by slowly adding the dry powder to the water whilst stirring by hand or power mixer to ensure a smooth lump-free mix. Refer to relevant supporting documentation on the mixing and installation of QF2 Fire Protection Compound.

- 8.** Pour the QF2 Fire Protection Compound into the opening around the services to the required thickness – minimum 100mm.



- 9.** Use a trowel to ensure the aperture is full and remove any excess QF2 Fire Protection Compound from around the opening.

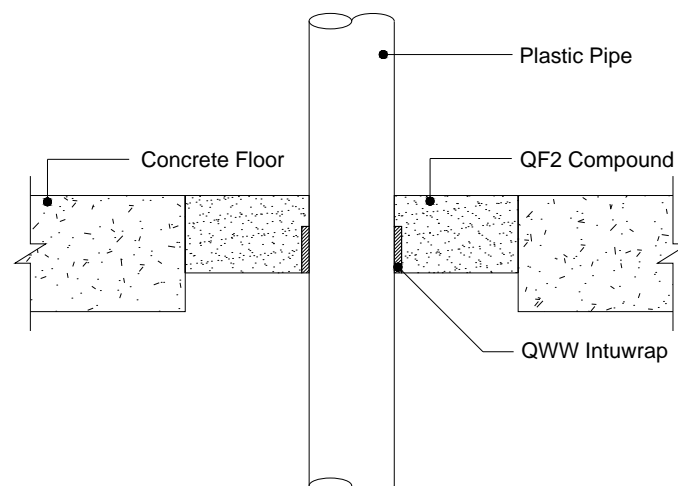
- 10.** Use a trowel to level the surface of the QF2 Fire Protection Compound and ensure a neat finish.



- 11.** Any spillages should be wiped up with a damp cloth before setting occurs.

- 12.** Allow 28 days for the QF2 Fire Protection Compound to fully 'cure'

- 13.** The MW Shuttering Slab can then be removed or alternatively may remain in place but we recommend cutting back the shutter so that the QWW is visible from the underside and exposed to fire. Any combustible shuttering such as plywood must be removed.



Packaging & Storage:

Quelfire QWW Intuwaps are supplied individually to suit specific pipe diameters of plastic pipe and may be packaged in cardboard boxes for shipping purposes and should be stored in a cool, dry location.

The orange plastic sleeve containing the intumescent with the labels on is an integral part of the product and should not be removed.

Health & Safety:

QWW CE Marked Intuwaps consist of a plastic sleeve containing graphite in a synthetic compound with the addition of filters and process oils.

For further information, please refer to the Material Safety Data Sheets, available on request or via the website.

Technical Support & Guidance:

Should you require any further information regarding this product, please do not hesitate to contact the technical department at Quelfire Ltd.

Tel: **0161 928 7308**. Email: technical@quelfire.co.uk

Please be aware that this document is intended for general information only and all details should be checked against all relevant supporting test evidence, certification and installation guidelines. Use of alternative components or deviations from the instructions in any way is likely to mean that the installation will not comply with the assessed rating.

Quelfire Ltd does not accept responsibility for the consequences of using Quelfire products in applications or for purposes not authorised by Quelfire Ltd. Expert advice should be sought where such applications are contemplated.

The policy of Quelfire Ltd is one of constant improvement. Installers should therefore ensure they are working from the latest published drawings and instructions. Whilst Quelfire will endeavour to keep its publications up to date, the accuracy of the information contained within this drawing may be affected by pertinent changes in the law or regulatory requirements and alterations or amendments to the specification of Quelfire products.

All information contained in this document is given in good faith and is provided for guidance only. Any drawings provided are for illustrative purposes only. As Quelfire Ltd has no control over the methods or competence of installation and of prevailing site conditions, no warranties, expressed or implied, is intended to be given as to the actual performance of the product mentioned or referred to herein and no liability whatsoever will be accepted for any loss, damage or injury arising from the use of the information given.