

Ceiling Fan Cuff

INSTALLATION INSTRUCTIONS

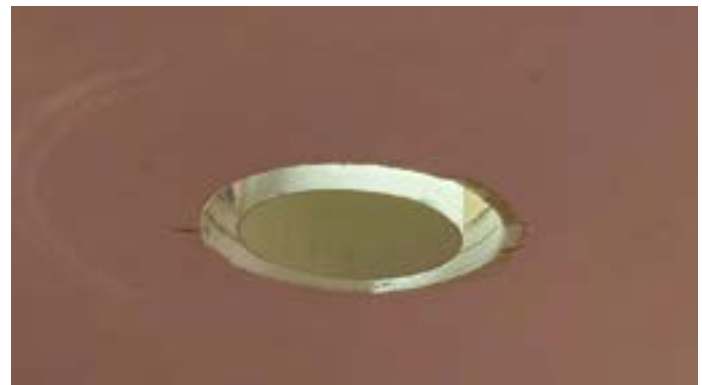
This installation guide is intended for general information only and all details should be checked against relevant supporting test evidence and certification.



CFC Ceiling Fan Cuff



1. Cut the plasterboard aperture to $\text{\O}135\text{mm}$ around the $\text{\O}100\text{mm}$ PVC duct spigot.



2. Centralise the $\text{\O}100\text{mm}$ PVC duct spigot within the hole.



3. From the underside push the Quelfire CFC100 up into the aperture around the PVC duct ensuring the spring clip clamps fully back onto the plasterboard and that the Quelfire CFC100 is clamped tight in position.

Ceiling Fan Cuff INSTALLATION INSTRUCTIONS



4. Make sure the gap between the CFC100 and the plasterboard is clean of any debris and remove dust from all edges. Seal the small gap between the CFC100 and the plasterboard with QuelStop Acrylic Sealant.



5. Connect the ceiling fan to the vent duct



6. Install the ceiling fan to the plasterboard with correct screw fixings in accordance with the ceiling fan manufacturers requirements.



The CFC has been tested in the scenario shown on the specific manufacturers fan units. The customer/installer should satisfy themselves, or consult a fire engineer that the product, test data available, standards to which the product is tested, fan units and ducting, floor/ceiling construction is applicable and satisfactory for their specific scenario as Quelfire are not able to comment on each and every scenario.

Technical Support & Guidance:

Should you require any further information regarding this product, please do not hesitate to contact the technical department at Quelfire Ltd.

Tel: **0161 928 7308**. Email: technical@quelfire.co.uk

Please be aware that this document is intended for general information only and all details should be checked against all relevant supporting test evidence, certification and installation guidelines. Use of alternative components or deviations from the instructions in any way is likely to mean that the installation will not comply with the assessed rating.

Quelfire Ltd does not accept responsibility for the consequences of using Quelfire products in applications or for purposes not authorised by Quelfire Ltd. Expert advice should be sought where such applications are contemplated.

The policy of Quelfire Ltd is one of constant improvement. Installers should therefore ensure they are working from the latest published drawings and instructions. Whilst Quelfire will endeavour to keep its publications up to date, the accuracy of the information contained within this drawing may be affected by pertinent changes in the law or regulatory requirements and alterations or amendments to the specification of Quelfire products.

All information contained in this document is given in good faith and is provided for guidance only. Any drawings provided are for illustrative purposes only. As Quelfire Ltd has no control over the methods or competence of installation and of prevailing site conditions, no warranties, expressed or implied, is intended to be given as to the actual performance of the product mentioned or referred to herein and no liability whatsoever will be accepted for any loss, damage or injury arising from the use of the information given.

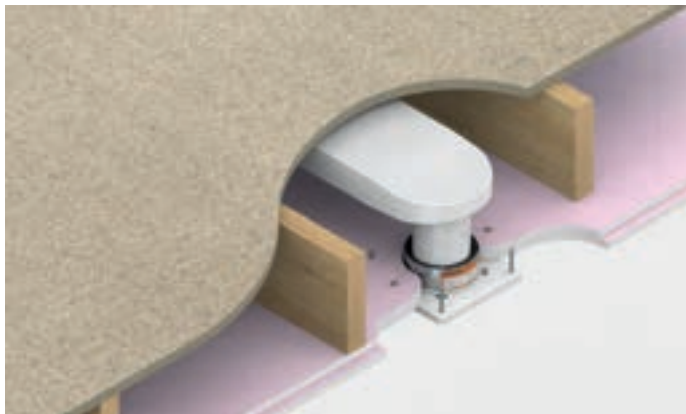
Quelfire CFC Ceiling Fan Cuffs prevent the spread of fire through ceilings where plastic ceiling fans penetrate the fire line plasterboard.

FEATURES & BENEFITS

- Tested generally in accordance with BS EN 1364-2: 2018 Fire Resistance Tests for non-loadbearing elements – Part 2: Ceilings and additional guidance from BS EN 1366-3: 2009. (Test Report WF424611)
- Up to 90 minutes Integrity and Insulation.
- Can be retrofitted.
- Suitable for a range of ventilation systems.



CFC Ceiling Fan Cuff



CFC Ceiling Fan Cuff installed - cross section

Tested on the following Extract Fan Units:

- Envirovent Profile 100 Fan
- Envirovent Silent 100 Fan
- Envirovent ECO dMEV Fan
- Domus SDF 100mm Axial Fan

COMPOSITION

The CFC Ceiling Fan Cuffs consist of a continuous pressed stainless steel flexible shell containing a high performance graphite based intumescent material which reacts under the influence of heat to exert pressure on the duct as it softens to form a carbonaceous char which provides an effective insulation plug thus preventing fire passing through to the adjoining compartment. The CFC has built in spring clips which hold it to the plasterboard ceiling.

PERFORMANCE

Product Code	PVC Duct Size (mm)	Recommended hole dia. (mm)	CFC Length (mm)	Fire Rating
CFC100	Ø100mm	Ø135mm	50mm	Up to 90 mins

APPLICATION / INSTALLATION

1. Cut the plasterboard aperture to Ø135mm around the Ø100mm PVC duct spigot.
2. Centralise the Ø100mm PVC duct spigot Within the hole.
3. From the underside push the Quelfire CFC100 up into the aperture around the PVC duct ensure the spring clip clamps fully back onto the plasterboard and that the Quelfire CFC100 is clamped tight in position.
4. Make sure the gap between the CFC100 and the plasterboard is clean of any debris and remove dust from all edges.
5. Seal the small gap between the CFC100 and the plasterboard with QuelStop Acrylic Sealant.
6. Install the ceiling fan to the plasterboard with correct screw fixings in accordance with the ceiling fan manufacturers requirements.

The CFC has been tested in the scenario shown on the specific manufacturers' fan units. The customer/installer should satisfy themselves, or consult a fire engineer that the product, test data available, standards to which the product is tested, fan units and ducting, floor/ceiling construction is applicable and satisfactory for their specific scenario as Quelfire are not able to comment on each and every scenario.

Terms and Conditions

Should you require any further information regarding this product, please do not hesitate to contact the technical department at Quelfire Ltd.

Tel: 0161 928 7308. Email: technical@quelfire.co.uk

Please be aware that this document is intended for general information only and all details should be checked against all relevant supporting test evidence, certification and installation guidelines

Use of alternative components or deviations from the instructions in any way is likely to mean that the installation will not comply with the assessed rating.

Quelfire Ltd does not accept responsibility for the consequences of using Quelfire products in applications or for purposes not authorised by Quelfire Ltd. Expert advice should be sought where such applications are contemplated.

The policy of Quelfire Ltd is one of constant improvement. Installers should therefore ensure they are working from the latest published drawings and instructions. Whilst Quelfire will endeavour to keep its publications up to date, the accuracy of the information contained within this drawing may be affected by pertinent changes in the law or regulatory requirements and alterations or amendments to the specification of Quelfire products.

All information contained in this document is given in good faith and is provided for guidance only. Any drawings provided are for illustrative purposes only. As Quelfire Ltd has no control over the methods or competence of installation and of prevailing site conditions, no warranties, expressed or implied, is intended to be given as to the actual performance of the product mentioned or referred to herein and no liability whatsoever will be accepted for any loss, damage or injury arising from the use of the information given.

Quelfire is a Registered Trademark.

For full terms and conditions visit <https://quelfire.co.uk/terms-conditions-of-sale/>

MATERIAL SAFETY DATA SHEET

Product name	Quelfire CFC Ceiling Fan Cuff
Product Code(s)	CFC100
Revision Date	01/01/2021
Revision number	02

Section 1: Identification of the substance/mixture and of the company / undertaking

1.1. Product identifier

Product name	Quelfire CFC Ceiling Fan Cuff
Product Code	CFC100

1.2. Relevant identified uses of the substance or mixture and uses advised against

Not applicable

1.3. Details of the supplier of the safety data sheet

Company Name	Quelfire Limited Springvale Industrial Estate Millbuck Way Sandbach CW11 3HT
Tel	0161 928 7308
Fax	0161 924 1340
Email	technical@quelfire.co.uk

1.4. Emergency telephone number

Emergency telephone number	0161 928 7308 (Office hours only)
----------------------------	-----------------------------------

Section 2: Hazards Identification

2.1. Classification of the substance or mixture

Classification under CLP	Not Classified
--------------------------	----------------

2.2. Label elements

This product has no label elements

2.3. Other hazards

This product is not identified as a PBT/ vPvB substance

Section 3: Composition/information on ingredients

3.1. Substances

Thermoplastic sheet composition containing intercalated graphite in a synthetic compound with the addition of filters and process oils. The intumescent element is contained within a metal shell.

3.2. Mixtures

No data available

Section 4: First aid measures

MATERIAL SAFETY DATA SHEET

4.1. Description of first aid measures

Skin contact	It is possible that handling of the composite interior could cause skin irritation, in which case first rinse with water and remove fragments of the composite material, then wash with plenty of soap and water. Do not use organic solvents.
Eye contact	Rinse with water and seek medical attention.
Ingestion	If ingested do not induce vomiting, seek medical attention
Inhalation	Consult a doctor

4.2. Most important symptoms and effects, both acute and delayed

Skin contact	There may be mild irritation at the site of contact
Eye contact	There may be irritation and redness
Ingestion	There may be irritation of the throat
Inhalation	There may be irritation of the throat with a feeling of tightness in the chest.

4.3. Indication of any immediate medical attention and special treatment needed

Immediate/special treatment	Not applicable
-----------------------------	----------------

Section 5: Fire-Fighting measures

5.1. Extinguishing media

Suitable Extinguishing Media	Water, CO2, Foam and/ or dry powder
------------------------------	-------------------------------------

5.2. Special hazards arising from the substance or mixture

Exposure hazards	In combustion emits toxic fumes
------------------	---------------------------------

5.3. Advice for fire-fighters

Advice for fire-fighters	Wear self-contained breathing apparatus. Wear suitable proactive clothing to prevent contact with skin and eyes
--------------------------	---

Section 6: Accidental release measures

6.1. Personal precautions, protective equipment and emergency procedures

Refer to section 8 'Exposure controls/ personal protection'.
--

6.2. Environmental precautions

Environmental	Do not discharge into drains or rivers.
---------------	---

6.3. Methods and materials for containment and cleaning up

Clean-up procedures	Wash the spillage site with large amounts of water.
---------------------	---

6.4. Reference to other sections

Refer to section 8 'Exposure controls/ personal protection'

Section 7: Handling and storage

7.1. Precautions for safe handling

MATERIAL SAFETY DATA SHEET

Handling requirements	Avoid the formation or spread of dust in the air Avoid handling interior composite material
-----------------------	--

7.2. Conditions for safe storage, including any incompatibilities

Storage conditions	Store in cool, well ventilated area.
--------------------	--------------------------------------

7.3. Specific end use(s)

Specific end use(s)	No data available
---------------------	-------------------

Section 8: Exposure controls/personal protection

8.1. Control parameters

No data available

8.2. Exposure controls

Respiratory protection	Not normally required. However secondary operations, such as drilling may generate dust so in these operations a suitable Respiratory protective device with particle filter should be worn
Hand protection	Protective gloves
Eye protection	Safety glasses. Ensure eye bath is to hand.
Skin protection	Protective clothing

Personal protective equipment symbol(s):



Section 9: Physical and chemical properties

9.1. Information on basic physical and chemical properties

State	Solid
Odour	Odourless

9.2. Other information

Solubility – insoluble in water and generally chemical inert
--

Section 10: Stability and reactivity

10.1. Reactivity

Stable under recommended transport or storage conditions
--

10.2. Chemical stability

Stable under normal conditions

10.3. Possibility of hazardous reactions

Hazardous reactions will not occur under normal transport or storage conditions. Decomposition may occur on exposure to conditions or materials listed below.

MATERIAL SAFETY DATA SHEET

10.4. Conditions to avoid

Heat

10.5. Incompatible materials

Strong oxidising agents. Strong acids

10.6. Hazardous decomposition products

In combustion emits toxic fumes

Section 11: Toxicological information

11.1. Information on toxicological effects

Non-toxic in solid state

Section 12: Ecological information

12.1. Toxicity

No data available

12.2. Persistence and degradability

Biodergradable

12.3. Bioaccumulative potential

Not potentially Bioaccumulative

12.4. Mobility in soil

No data available

12.5 Results of PBT and vPvB assessment

This product is not identified as a PBT/ vPvB substance

12.6. Other adverse effects

Negligible ecotoxicity

Section 13: Disposal considerations

13.1. Waste treatment methods

Regional legislation (waste)	Disposal must be done according to official regulations.
Waste treatment methods	Dispose of contents/ container in accordance with licensed collector's sorting instructions

Section 14: Transport information

This product does not require a classification for transport

14.6. Special Precautions for user

Overland Transport	Not Applicable
Transport by sea	Not Applicable
Air transport	Not Applicable
Inland waterway transport	Not Applicable
Rail transport	Not Applicable

Section 15: Regulatory information

☎ 0161 928 7308

✉ sales@quelfire.co.uk

🌐 www.quelfire.co.uk

MATERIAL SAFETY DATA SHEET

15.1. Safety, health and environmental regulations/legislation specific for the substance or mixture

No additional information available

15.2. Chemical Safety Assessment

Chemical Safety Assessment	No chemical safety assessment has been carried out
----------------------------	--

Section 16: Other information

Other information	This safety data sheet is prepared in accordance with Commission Regulation (EU) No 453/2010. *indicates text in the SDS which has changed since last revision.
Legal disclaimer	The above information is believed to be correct but does not purport to be all inclusive and shall be used only as a guide. This company shall not be held liable for any damage resulting from handling or from contact with the above product.